



Greencroft Gardens
SOUTH HAMPSTEAD, LONDON, NW6
£525



A spacious two bedroom two bathroom ground floor flat set within a charming red-brick conversion.

The apartment is extremely well decorated throughout with solid wood flooring, stunning kitchen and direct access to private patio garden and communal gardens.

The property is in a prime location close to local amenities including Finchley Road tube, O2 Centre and Swiss Cottage Underground Station (Jubilee Line).





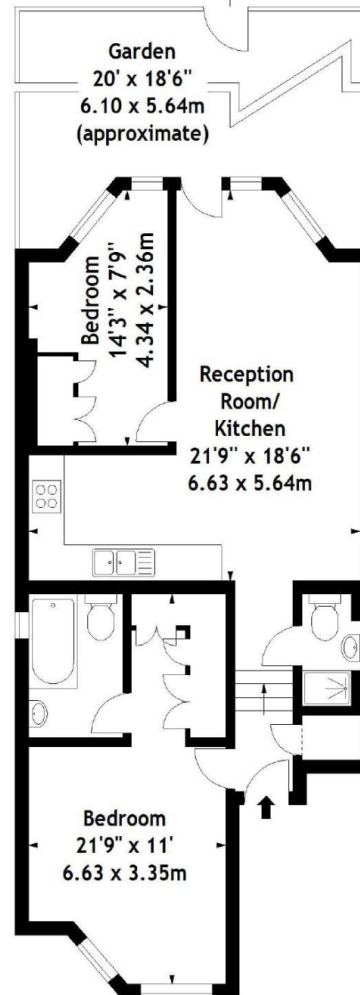




Greencroft Garden, NW6
Approx. Gross Internal Area
690 Sq Ft - 64.10 Sq M



Communal
Garden



Measured in accordance with RICS guidelines. Every attempt is made to ensure accuracy, however all measurements are approximate. This floor plan is for illustrative purposes only and is not to scale.

© Datagraphy Ltd 2014
Photographs * Floorplans * Virtual Tours
Tel: 0845 643 4401 www.datagraphy.com

Particulars

Property

Greencroft Gardens, South Hampstead, London, NW6
£525

Rooms

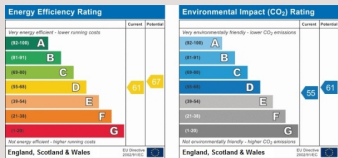


Features

- Modern
- Wooden Floors
- Seconds to Finchley Road Tube
- Direct access to private patio garden

Information

Council Tax



Oliver Kent

oliver.kent@vitaproperties.uk

+4477 7274 0351



Scan for our website





T: +4420 7759 2199
E: enquiries@vitaproperties.uk

Disclaimer: These particulars are prepared as a general guide for prospective purchasers or tenants and do not constitute, nor constitute part of, an offer or contract. All statements, descriptions, and measurements contained herein are given in good faith and are believed to be correct at the time of printing, but any intending purchaser or tenant should not rely on them as statements or representations of fact and must satisfy themselves by inspection or otherwise as to their correctness. Floor plans and photographs are for illustrative purposes only and may not be to scale. The position and size of doors, windows, appliances, and other features are approximate. Anti-Money Laundering (AML): In line with the Money Laundering, Terrorist Financing and Transfer of Funds Regulations 2017, we are required to carry out customer due diligence checks. Buyers/tenants will be asked to provide proof of identity, address, and source of funds before a sale or rental can be agreed. Data Protection (GDPR): Personal information supplied to Vita Properties will be processed in accordance with the General Data Protection Regulation (GDPR). Your details may be retained for legitimate business purposes relating to property services. Full details of our Privacy Policy are available on request.

All rights reserved.