



Wedderburn Road
HAMPSTEAD, LONDON, NW3

£1,699,950



Offered chain free and with the share of the freehold - Situated within this grand red brick detached residence, a spacious three bedroom, three bathroom duplex garden apartment of approximately 1,673 sq ft (155 sq mt).

The apartment is entered at raised ground floor level, and accommodation includes a kitchen/breakfast room, a bright 20'3" reception room, and a conservatory leading directly to a well-manicured private garden. Further benefits include a utility room and sauna.

Wedderburn Road is a highly sought-after address, situated just moments from the trendy boutiques and restaurants in Belsize Village, and conveniently located for Hampstead Village (Northern Line), Swiss Cottage (Jubilee Line) and the numerous schools in the area.





Offered chain free and with the share of the freehold - Situated within this grand red brick detached residence, a spacious three bedroom, three bathroom duplex garden apartment of approximately 1,673 sq ft (155 sq mt).

The apartment is entered at raised ground floor level, and accommodation includes a kitchen/breakfast room, a bright 20'3" reception room, and a conservatory leading directly to a well-manicured private garden. Further benefits include a utility room and sauna.

Wedderburn Road is a highly sought-after address, situated just moments from the trendy boutiques and restaurants in Belsize Village, and conveniently located for Hampstead Village (Northern Line), Swiss Cottage (Jubilee Line) and the numerous schools in the area.

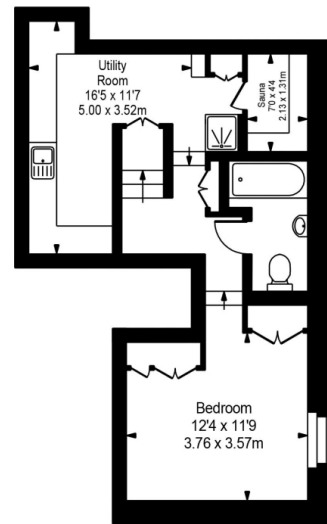




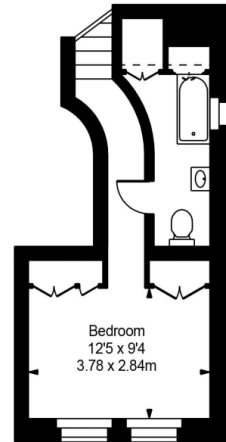




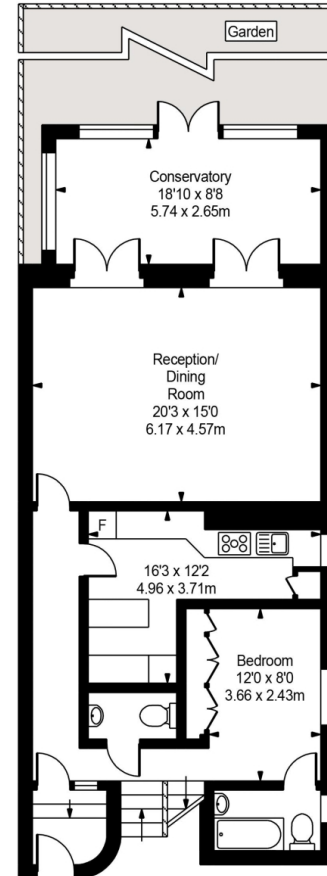
Wedderburn Road



Lower Ground Floor



Raised Ground Floor



Ground Floor



Approx Gross Internal Area **1742 Sq Ft - 161.83 Sq M**

FOR ILLUSTRATIVE PURPOSES ONLY. NOT TO SCALE.

Whilst every attempt has been made to ensure the accuracy of the floorplan shown, all measurements, positioning, fixtures, fittings and any other data shown are an approximate interpretation for illustrative purposes only and are not to scale. No responsibility is taken for any error, omission, miss-statement or use of data shown. Floor plan by www.bestangle.co.uk

Particulars

Property

Wedderburn Road, Hampstead, London, NW3
£1,699,950

Rooms

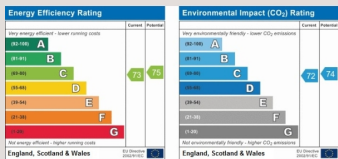


Features

- Early viewings highly recommended
- Chain free
- Share of freehold
- Located in the heart of Hampstead and withing walking distance to Belsize Park & Swiss Cottage

Information

Council Tax



Oliver Kent

oliver.kent@vitaproperties.uk
+4477 7274 0351



Scan for our website





T: +4420 7759 2199
E: enquiries@vitaproperties.uk

Disclaimer: These particulars are prepared as a general guide for prospective purchasers or tenants and do not constitute, nor constitute part of, an offer or contract. All statements, descriptions, and measurements contained herein are given in good faith and are believed to be correct at the time of printing, but any intending purchaser or tenant should not rely on them as statements or representations of fact and must satisfy themselves by inspection or otherwise as to their correctness. Floor plans and photographs are for illustrative purposes only and may not be to scale. The position and size of doors, windows, appliances, and other features are approximate. Anti-Money Laundering (AML): In line with the Money Laundering, Terrorist Financing and Transfer of Funds Regulations 2017, we are required to carry out customer due diligence checks. Buyers/tenants will be asked to provide proof of identity, address, and source of funds before a sale or rental can be agreed. Data Protection (GDPR): Personal information supplied to Vita Properties will be processed in accordance with the General Data Protection Regulation (GDPR). Your details may be retained for legitimate business purposes relating to property services. Full details of our Privacy Policy are available on request.

All rights reserved.