



Picton Place

MARYLEBONE, LONDON, W1U

£795

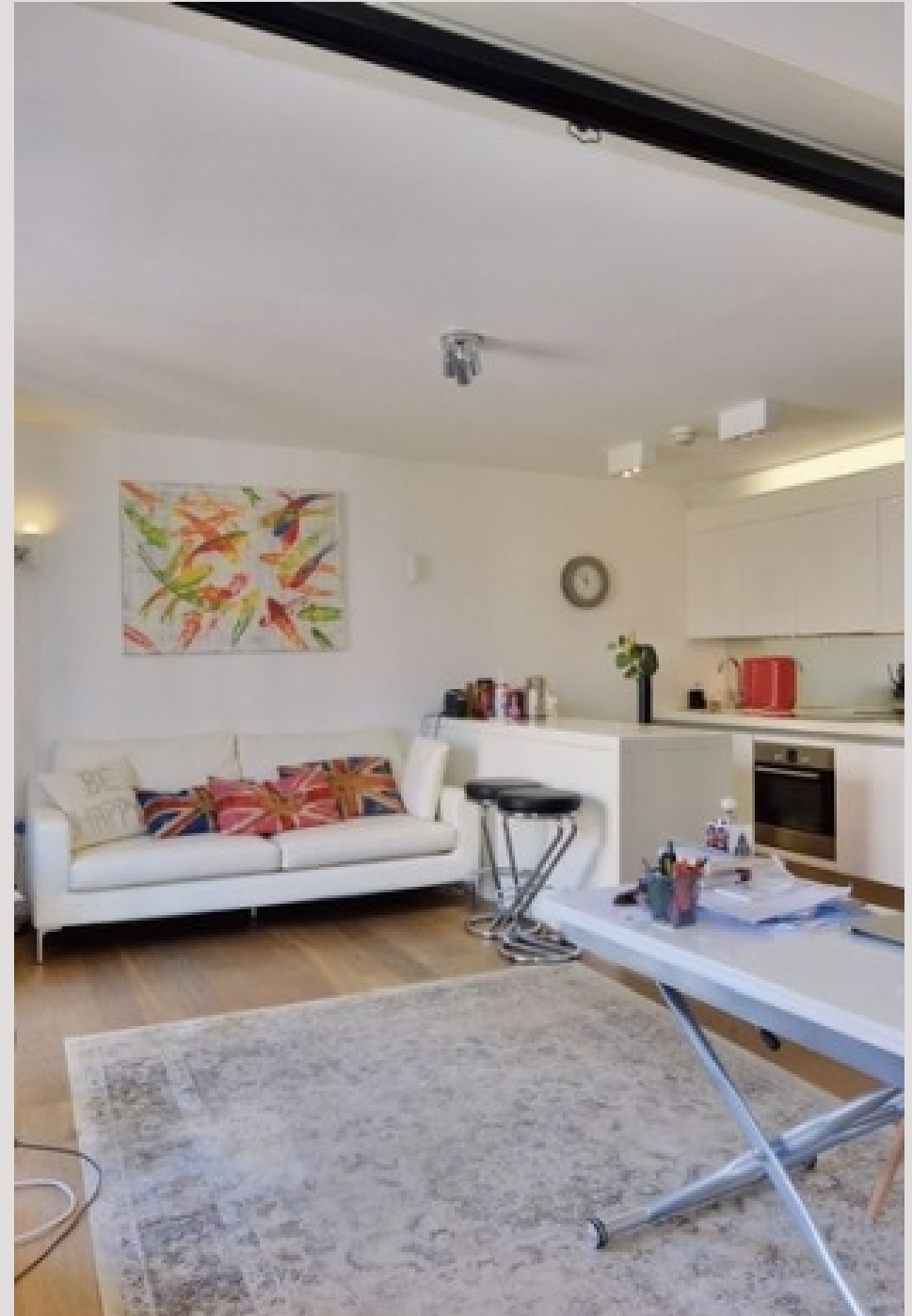


A two double bedroom flat located within this luxury purpose build block constructed in 2008 by one of the world's leading interior design and development companies Candy & Candy.

The apartment is located on the fourth floor, west facing with views over the roof tops with built in wardrobes, large shower room with stone slabs to floor and underfloor heating, open plan kitchen with white stone worktops and reception with wooden floors.

Heating and hot water runs on the block and therefore included in the rent.

The property is situated within walking distance of fashionable shops and restaurants of Marylebone High Street, St Christopher's Place, Oxford Street and Bond Street with an excellent transport link including Central and Jubilee lines from Bond Street and Bakerloo, Victoria and Central lines from Oxford Street.





In addition the flat benefits from a day time concierge, lift and video entry phone.

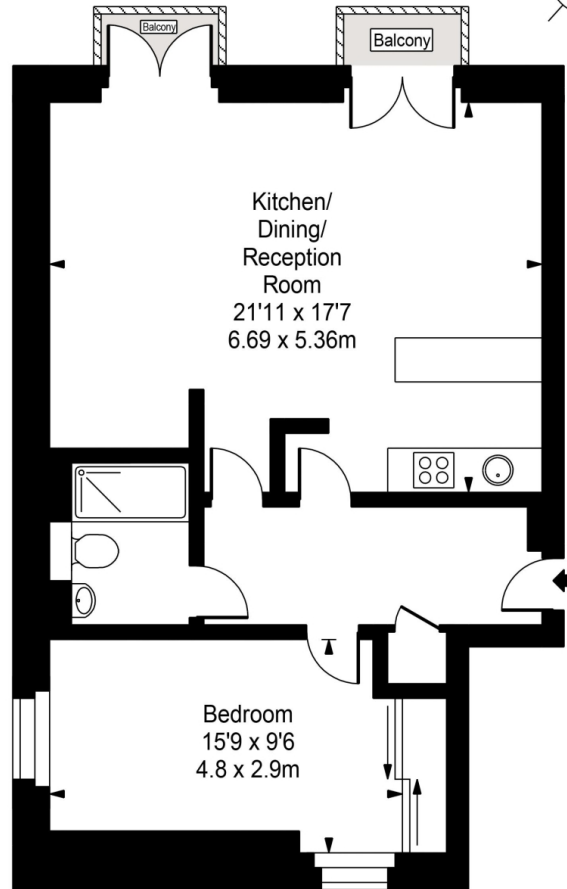
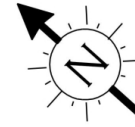








# Picton Place



## Third Floor

Approx Gross Internal Area **688 Sq Ft - 63.93 Sq M**



FOR ILLUSTRATIVE PURPOSES ONLY. NOT TO SCALE.

Whilst every attempt has been made to ensure the accuracy of the floorplan shown, all measurements, positioning, fixtures, fittings and any other data shown are an approximate interpretation for illustrative purposes only and are not to scale. No responsibility is taken for any error, omission, miss-statement or use of data shown.  
Floor plan by [www.bestangle.co.uk](http://www.bestangle.co.uk)

# Particulars

## Property

Picton Place, Marylebone, London, W1U  
£795

## Rooms

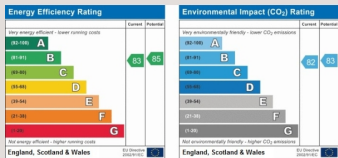


## Features

- Available immediately
- Two Bedroom
- Located to the North of Oxford Street and served by the boutique restaurants and shops of St Christopher's Place
- Porter and lift

## Information

Council Tax



Oliver Kent

oliver.kent@vitaproperties.uk  
+4477 7274 0351



Scan for our website





T: +4420 7759 2199  
E: [enquiries@vitaproperties.uk](mailto:enquiries@vitaproperties.uk)

Disclaimer: These particulars are prepared as a general guide for prospective purchasers or tenants and do not constitute, nor constitute part of, an offer or contract. All statements, descriptions, and measurements contained herein are given in good faith and are believed to be correct at the time of printing, but any intending purchaser or tenant should not rely on them as statements or representations of fact and must satisfy themselves by inspection or otherwise as to their correctness. Floor plans and photographs are for illustrative purposes only and may not be to scale. The position and size of doors, windows, appliances, and other features are approximate. Anti-Money Laundering (AML): In line with the Money Laundering, Terrorist Financing and Transfer of Funds Regulations 2017, we are required to carry out customer due diligence checks. Buyers/tenants will be asked to provide proof of identity, address, and source of funds before a sale or rental can be agreed. Data Protection (GDPR): Personal information supplied to Vita Properties will be processed in accordance with the General Data Protection Regulation (GDPR). Your details may be retained for legitimate business purposes relating to property services. Full details of our Privacy Policy are available on request.

All rights reserved.