



Westfield Lodge

FINCHLEY ROAD, HAMPSTEAD, LONDON, NW3

£950,000



Situated within this prestigious and highly sought after development, an immaculate and brand newly refurbished interior designed 2 bedroom raised ground floor apartment with 2 exceptional bathrooms.

This spacious apartment comprises 868 sq ft, boasts a ceiling height of 3.5 meters and is situated within a converted red brick period house which forms part of the Westfield development.

The interior has been meticulously refurbished by its current owner to a very high standard to include superb bathrooms with Hansgrohe sanitary fittings and Italian Catalano sanitary ware. The apartment is fitted with a German Leicht kitchen, 30mm black galaxy granite worktops and splash back, Miele appliances and the latest Quooker fusion pro mixer tap system.

The current owner commissioned a lighting architect who installed Onyx stone effect and advance intelligent lighting system throughout the apartment.

Westfield is one of Hampstead's premier purpose built developments, situated on Kidderpore Avenue, a quiet residential turning in Hampstead.





The development provides benefits such as secure underground parking, 24hr portorage, an indoor swimming pool, gymnasium and landscaped communal gardens.

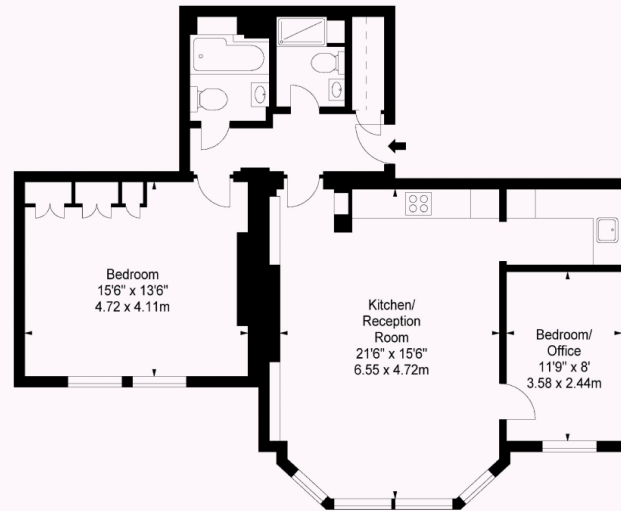
Located moments from the amenities of Finchley Road and within easy reach of the shops, bars and restaurants of West End Lane, Finchley Road is close to a superb range of shops and amenities











GROUND FLOOR

APPROX. GROSS INTERNAL AREA *
868 Ft² - 80.64 M²

Property Details:
APARTMENT 4
WESTFIELD LODGE
302 FINCHLEY ROAD
NW3



Surveyed and Drawn By:



Sunnyhill House
3-7 Sunnyhill Road
London, SW16 2UG

Tel: 0845 257 2023
Fax: 0845 257 2024
info@bkrfloorplans.co.uk
www.bkrfloorplans.co.uk

Plans Drawn: 18.08.2016

© BKR 2016

Particulars

Property

Westfield Lodge, Finchley Road, Hampstead, London, NW3
£950,000

Rooms



1



2



2

Information

Council Tax

Features

- 3.5 meter ceiling heights
- Total rewiring with CAT 6 cabling throughout. TV/Satellite ready in Living room and Master bedroom.
- Hamilton intelligent lighting system
- State of the art electrical fireplace with 3 LED background settings, via a remote control you can control the sound, speed of fire,



Oliver Kent

oliver.kent@vitaproperties.uk
+4477 7274 0351



Scan for our website





T: +4420 7759 2199
E: enquiries@vitaproperties.uk

Disclaimer: These particulars are prepared as a general guide for prospective purchasers or tenants and do not constitute, nor constitute part of, an offer or contract. All statements, descriptions, and measurements contained herein are given in good faith and are believed to be correct at the time of printing, but any intending purchaser or tenant should not rely on them as statements or representations of fact and must satisfy themselves by inspection or otherwise as to their correctness. Floor plans and photographs are for illustrative purposes only and may not be to scale. The position and size of doors, windows, appliances, and other features are approximate. Anti-Money Laundering (AML): In line with the Money Laundering, Terrorist Financing and Transfer of Funds Regulations 2017, we are required to carry out customer due diligence checks. Buyers/tenants will be asked to provide proof of identity, address, and source of funds before a sale or rental can be agreed. Data Protection (GDPR): Personal information supplied to Vita Properties will be processed in accordance with the General Data Protection Regulation (GDPR). Your details may be retained for legitimate business purposes relating to property services. Full details of our Privacy Policy are available on request.

All rights reserved.