



Arkwright Road  
HAMPSTEAD, LONDON, NW3

£1,900



A stunning, exceptionally spacious 2 bedroom apartment of about 1,415 sq ft/131.5 sq m, within this exciting new development created from an imposing period house in Hampstead.

The luxuriously appointed accommodation is set on the raised ground floor and features beautiful high ceilings, luxury finishes and smart interior design with Comfort Cooling, integrated WiFi and Sonos system.

The flat has use of a communal garden and gated off street parking.

Arkwright Road is located close to Hampstead Village and transport amenities including Hampstead tube (0.3 miles), Finchley Road tube (0.5 miles) and Finchley Road & Frognal Overground station (0.3 miles)





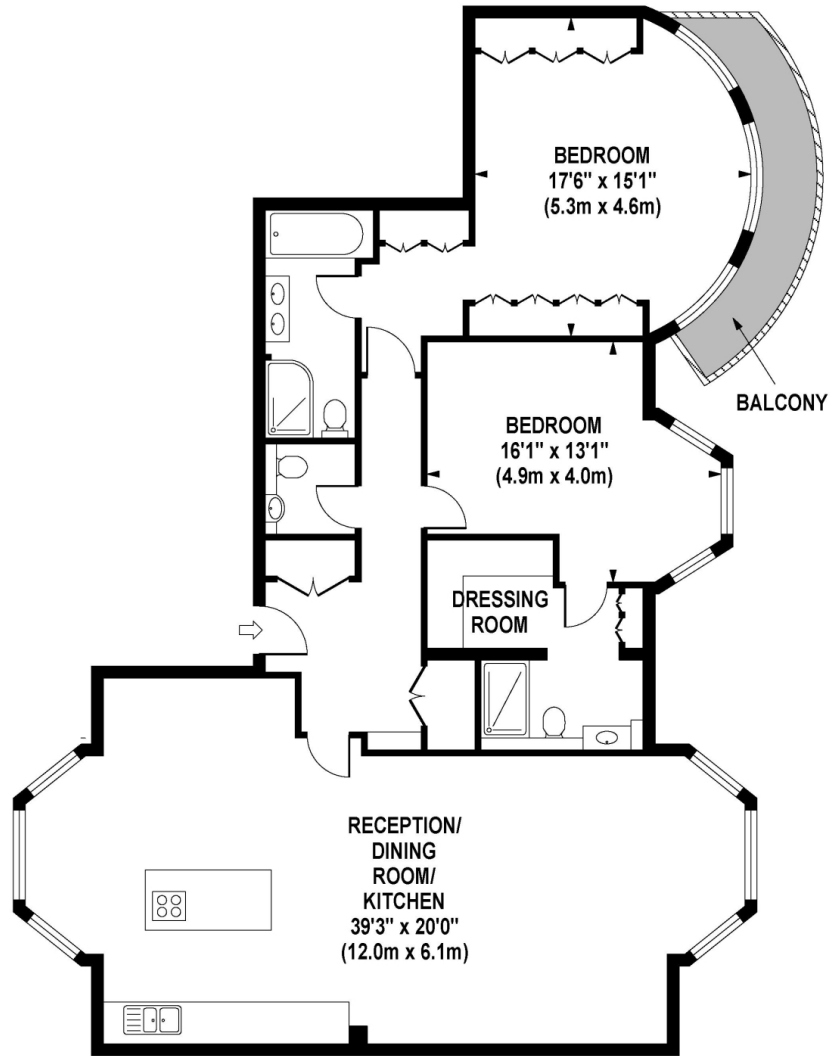






# ARKWRIGHT ROAD

Approximate Gross Internal Area 1415 sq ft / 131.5 sq m



**GROUND FLOOR  
GROSS INTERNAL  
FLOOR AREA 1415 SQ FT**

Although every attempt has been made to ensure accuracy, all measurements are approximate.  
The floor plan's for illustrative purposes only and not to scale. Measured in accordance to RICS standards.

# Particulars

## Property

Arkwright Road, Hampstead, London, NW3  
£1,900

## Rooms



1



2



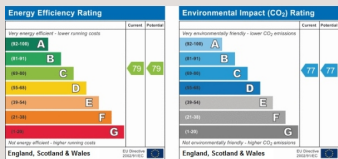
2

## Features

- 2 bedrooms, 2 bathrooms & WC
- Ground floor with access to the communal gardens
- 1,487 sq. ft
- Furnished

## Information

Council Tax

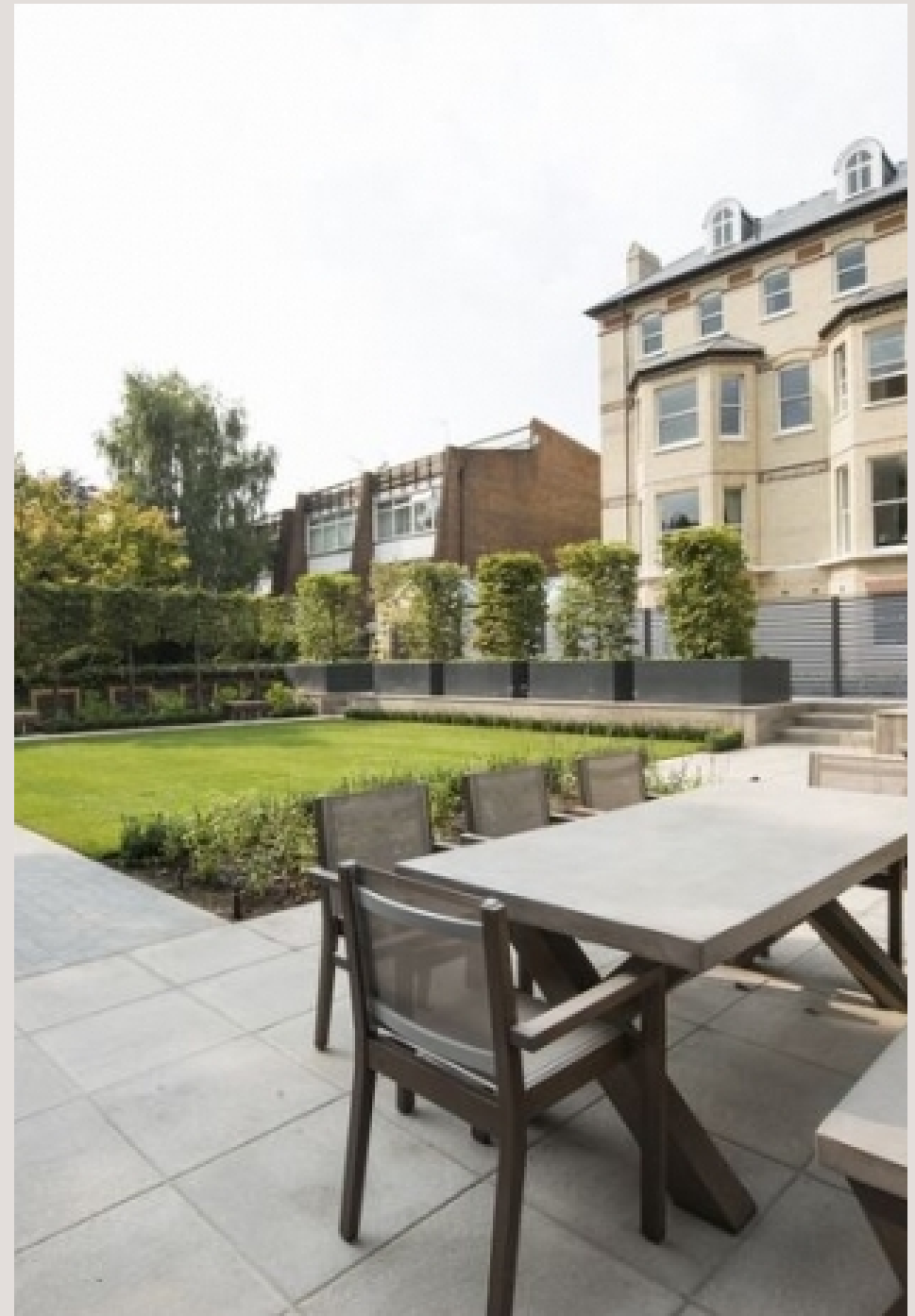


Oliver Kent

oliver.kent@vitaproperties.uk  
+4477 7274 0351



Scan for our website





T: +4420 7759 2199

E: [enquiries@vitaproperties.uk](mailto:enquiries@vitaproperties.uk)

Disclaimer: These particulars are prepared as a general guide for prospective purchasers or tenants and do not constitute, nor constitute part of, an offer or contract. All statements, descriptions, and measurements contained herein are given in good faith and are believed to be correct at the time of printing, but any intending purchaser or tenant should not rely on them as statements or representations of fact and must satisfy themselves by inspection or otherwise as to their correctness. Floor plans and photographs are for illustrative purposes only and may not be to scale. The position and size of doors, windows, appliances, and other features are approximate. Anti-Money Laundering (AML): In line with the Money Laundering, Terrorist Financing and Transfer of Funds Regulations 2017, we are required to carry out customer due diligence checks. Buyers/tenants will be asked to provide proof of identity, address, and source of funds before a sale or rental can be agreed. Data Protection (GDPR): Personal information supplied to Vita Properties will be processed in accordance with the General Data Protection Regulation (GDPR). Your details may be retained for legitimate business purposes relating to property services. Full details of our Privacy Policy are available on request.

All rights reserved.