



Arkwright Road
HAMPSTEAD, LONDON, NW3

£3,750



Available 14th June 2021 - A Simply stunning 4 bedroom duplex apartment offering some 2,835 sq ft/263.4 sq m of beautifully presented accommodation plus fabulous large roof terrace within this exciting new development created from an imposing period house.

This stylish home is set over the second and third floors and features luxury finishes and smart interior design with Comfort Cooling and integrated WiFi.

Included are use of a beautiful communal garden and gated off street parking.

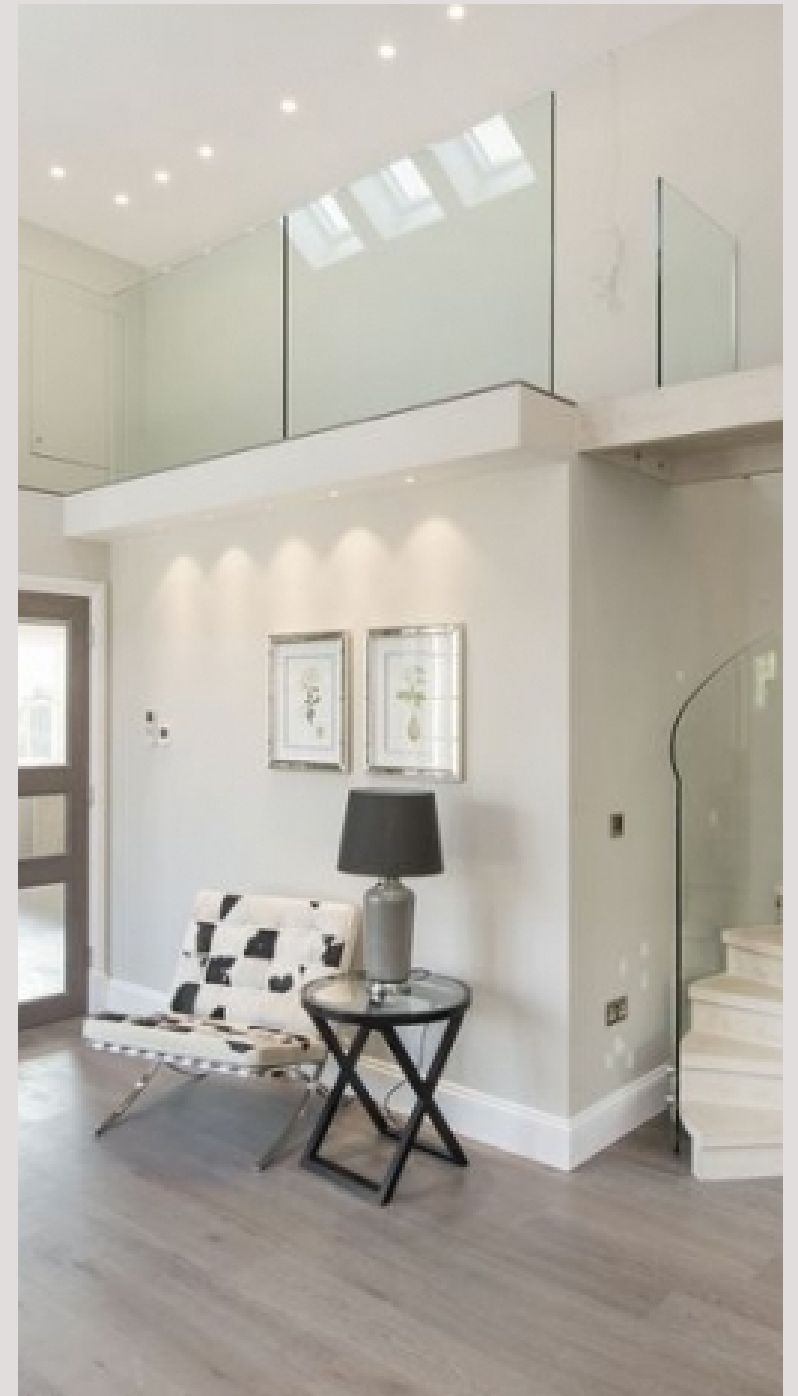
Arkwright Road is close to Hampstead Village and transport amenities including Hampstead tube (0.3 miles), Finchley Road tube (0.5 miles) and Finchley Road & Frognal Overground station (0.3 miles).



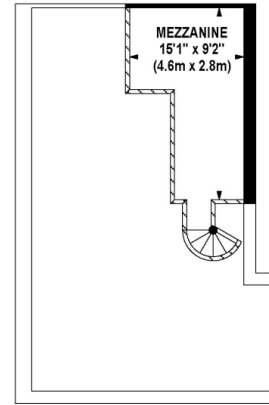




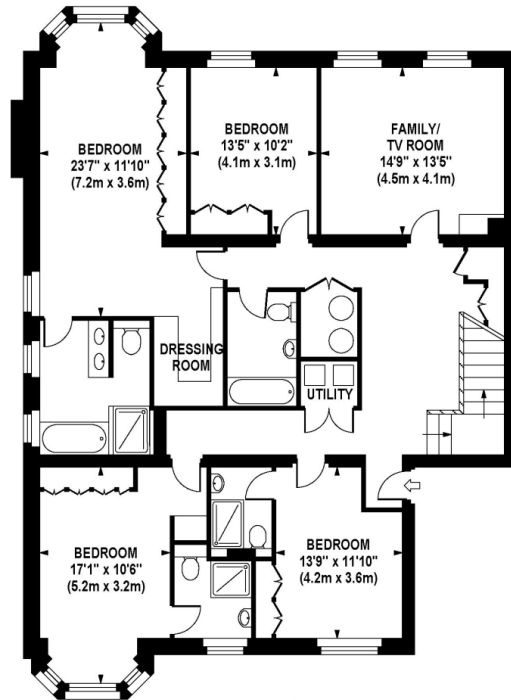




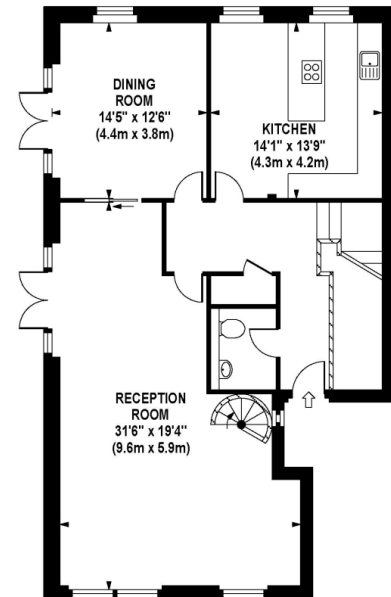
ARKWRIGHT ROAD
Approximate Gross Internal Area 2835 sq ft / 263.4 sq m



MEZZANINE
GROSS INTERNAL
FLOOR AREA 120 SQ FT



SECOND FLOOR
GROSS INTERNAL
FLOOR AREA 1646 SQ FT



THIRD FLOOR
GROSS INTERNAL
FLOOR AREA 1070 SQ FT

Although every attempt has been made to ensure accuracy, all measurements are approximate.
The floor plan's for illustrative purposes only and not to scale. Measured in accordance to RICS standards.

Particulars

Property

Arkwright Road, Hampstead, London, NW3
£3,750

Rooms



1



4



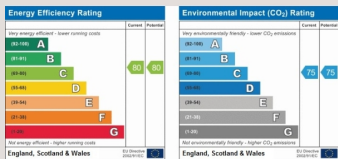
4

Features

- 4 BEDROOMS : 4 BATHROOMS (3 EN-SUITE) : RECEPTION ROOM
- MODERN KITCHEN : DINING ROOM : FAMILY ROOM
- ROOF TERRACE
- STUNNING VIEWS : ALLOCATED PARKING

Information

Council Tax



Oliver Kent

oliver.kent@vitaproperties.uk
+4477 7274 0351



Scan for our website





T: +4420 7759 2199
E: enquiries@vitaproperties.uk

Disclaimer: These particulars are prepared as a general guide for prospective purchasers or tenants and do not constitute, nor constitute part of, an offer or contract. All statements, descriptions, and measurements contained herein are given in good faith and are believed to be correct at the time of printing, but any intending purchaser or tenant should not rely on them as statements or representations of fact and must satisfy themselves by inspection or otherwise as to their correctness. Floor plans and photographs are for illustrative purposes only and may not be to scale. The position and size of doors, windows, appliances, and other features are approximate. Anti-Money Laundering (AML): In line with the Money Laundering, Terrorist Financing and Transfer of Funds Regulations 2017, we are required to carry out customer due diligence checks. Buyers/tenants will be asked to provide proof of identity, address, and source of funds before a sale or rental can be agreed. Data Protection (GDPR): Personal information supplied to Vita Properties will be processed in accordance with the General Data Protection Regulation (GDPR). Your details may be retained for legitimate business purposes relating to property services. Full details of our Privacy Policy are available on request.

All rights reserved.