



Latitude House

OVAL ROAD, PRIMROSE HILL, LONDON, NW1

£1,050

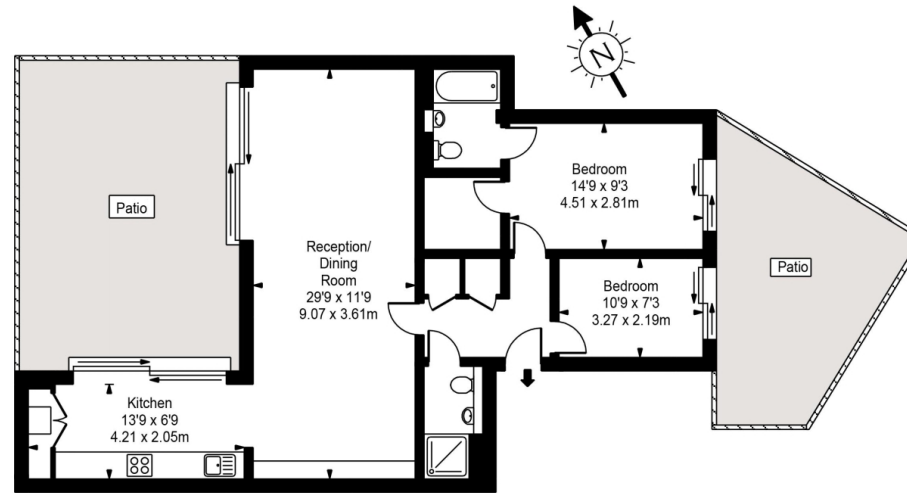


Available 6th October - A fantastic and contemporary 2 bedroom apartment of over 928 square feet set within this iconic small development superbly located just moments from Regents Park, Primrose Hill and Camden Town. The accommodation is situated on the first floor and comprises 2 Bedrooms, 2 smart Bathrooms (1 en-suite); Huge Reception with stylish open plan kitchen and fabulous large decked area. Wood flooring and Under floor heating throughout. Must Be Seen!





Latitude House



Lower Ground Floor



Approx Gross Internal Area **891 Sq Ft - 82.81 Sq M**

FOR ILLUSTRATIVE PURPOSES ONLY. NOT TO SCALE.

Whilst every attempt has been made to ensure the accuracy of the floorplan shown, all measurements, positioning, fixtures, fittings and any other data shown are an approximate interpretation for illustrative purposes only and are not to scale. No responsibility is taken for any error, omission, miss-statement or use of data shown.
Floor plan by www.bestangle.co.uk

Particulars

Property

Latitude House, Oval Road, Primrose Hill, London, NW1
£1,050

Rooms

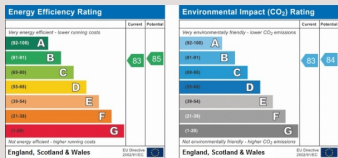


Features

- Modern
- Award winning development
- Balcony
- Seconds to Primrose Hill & Regents Park

Information

Council Tax



Zoe Browne

zoe.browne@vitaproperties.uk

+44 7880 277371



Scan for our website





T: +4420 7759 2199
E: enquiries@vitaproperties.uk

Disclaimer: These particulars are prepared as a general guide for prospective purchasers or tenants and do not constitute, nor constitute part of, an offer or contract. All statements, descriptions, and measurements contained herein are given in good faith and are believed to be correct at the time of printing, but any intending purchaser or tenant should not rely on them as statements or representations of fact and must satisfy themselves by inspection or otherwise as to their correctness. Floor plans and photographs are for illustrative purposes only and may not be to scale. The position and size of doors, windows, appliances, and other features are approximate. Anti-Money Laundering (AML): In line with the Money Laundering, Terrorist Financing and Transfer of Funds Regulations 2017, we are required to carry out customer due diligence checks. Buyers/tenants will be asked to provide proof of identity, address, and source of funds before a sale or rental can be agreed. Data Protection (GDPR): Personal information supplied to Vita Properties will be processed in accordance with the General Data Protection Regulation (GDPR). Your details may be retained for legitimate business purposes relating to property services. Full details of our Privacy Policy are available on request.

All rights reserved.