



Priory Road

SOUTH HAMPSTEAD, LONDON, NW6

£870



Available immediately - A beautifully presented garden apartment situated on quiet tree lined road conveniently located within close proximity of West Hampstead and Finchley Road.

The property comprises a spacious reception room with wood flooring and direct access onto the garden, large kitchen diner, master bedroom with en-suite bathroom, two further bedrooms, family bathroom, utility room, guest wc and a large conservatory.

Available immediately offered either furnished or unfurnished.

Both West Hampstead Station and Kilburn Park station are within a short walk

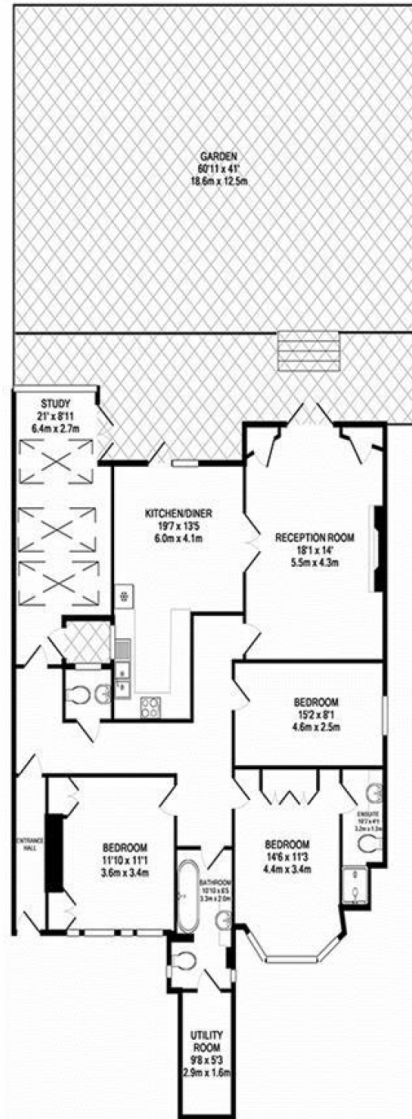












PRIORT ROAD NW6
TOTAL APPROX. FLOOR AREA 1488 SQ.FT. (138.2 SQ.M.)

For Illustration Purposes Only Not To Scale Floor Plan produced for Stones Residential by Chik Chak Limited This floor plan is intended as a guide only and its accuracy is in no way guaranteed. Prospective purchasers should satisfy themselves by inspection and relevant reporting of a property prior to purchase. This document does not form part of a legal contract. Areas, measurements or distances quoted are approximate and should in no way be the basis of any sale.

Particulars

Property

Priory Road, South Hampstead, London, NW6
£870

Rooms



1



2



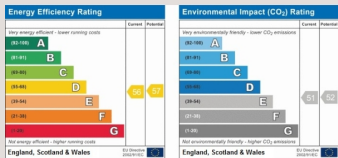
3

Features

- Beautiful garden flat
- South Hampstead Conservation Area
- Wooden Floors, Ornate Fireplaces, Excellent Internal Storage
- Utility Room

Information

Council Tax



Oliver Kent

oliver.kent@vitaproperties.uk
+4477 7274 0351



Scan for our website





T: +4420 7759 2199

E: enquiries@vitaproperties.uk

Disclaimer: These particulars are prepared as a general guide for prospective purchasers or tenants and do not constitute, nor constitute part of, an offer or contract. All statements, descriptions, and measurements contained herein are given in good faith and are believed to be correct at the time of printing, but any intending purchaser or tenant should not rely on them as statements or representations of fact and must satisfy themselves by inspection or otherwise as to their correctness. Floor plans and photographs are for illustrative purposes only and may not be to scale. The position and size of doors, windows, appliances, and other features are approximate. Anti-Money Laundering (AML): In line with the Money Laundering, Terrorist Financing and Transfer of Funds Regulations 2017, we are required to carry out customer due diligence checks. Buyers/tenants will be asked to provide proof of identity, address, and source of funds before a sale or rental can be agreed. Data Protection (GDPR): Personal information supplied to Vita Properties will be processed in accordance with the General Data Protection Regulation (GDPR). Your details may be retained for legitimate business purposes relating to property services. Full details of our Privacy Policy are available on request.

All rights reserved.