



Belsize Road

SWISS COTTAGE, LONDON, NW6

£595



Available immediately - A spacious first floor three bedroom apartment situated within walking distance to Swiss Cottage Underground Station. Comprising of an open plan fitted kitchen, large reception room, double bedroom with access to a private balcony, two further bedrooms and a modern bathroom and shower room. Further benefits include ample storage and lift access.



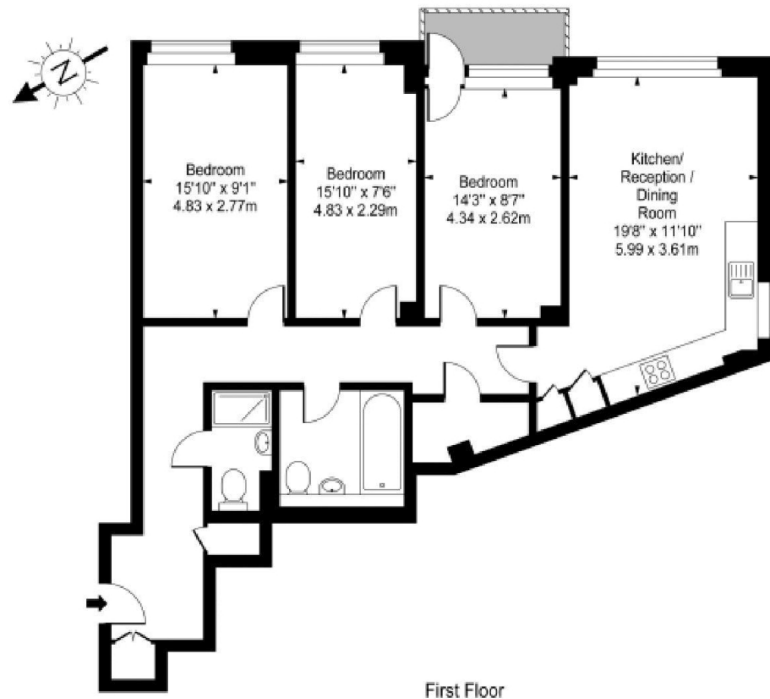








**Sheridan Court,  
Belsize Road, NW3**



First Floor

**Approx Gross Internal Area 962 Sq Ft - 89.37 Sq M**

For Illustration Purposes Only - Not To Scale Floor Plan by [www.epixandplans.com](http://www.epixandplans.com) Ref: No.31662

This floor plan should be used as a general outline for guidance only. Any intending purchaser or lessee should satisfy themselves by inspection, searches, enquiries and full survey as to the correctness of each statement. Any areas, measurements or distances quoted are approximate and should not be used to value a property or be the basis of any sale or let.

# Particulars

## Property

Belsize Road, Swiss Cottage, London, NW6  
£595

## Rooms



1



2



3

## Features

- Available immediately
- Part Furnished
- 3 Bedrooms
- 2 Bathrooms

## Information

Council Tax



Oliver Kent

[oliver.kent@vitaproperties.uk](mailto:oliver.kent@vitaproperties.uk)  
+4477 7274 0351



Scan for our website





T: +4420 7759 2199

E: [enquiries@vitaproperties.uk](mailto:enquiries@vitaproperties.uk)

Disclaimer: These particulars are prepared as a general guide for prospective purchasers or tenants and do not constitute, nor constitute part of, an offer or contract. All statements, descriptions, and measurements contained herein are given in good faith and are believed to be correct at the time of printing, but any intending purchaser or tenant should not rely on them as statements or representations of fact and must satisfy themselves by inspection or otherwise as to their correctness. Floor plans and photographs are for illustrative purposes only and may not be to scale. The position and size of doors, windows, appliances, and other features are approximate. Anti-Money Laundering (AML): In line with the Money Laundering, Terrorist Financing and Transfer of Funds Regulations 2017, we are required to carry out customer due diligence checks. Buyers/tenants will be asked to provide proof of identity, address, and source of funds before a sale or rental can be agreed. Data Protection (GDPR): Personal information supplied to Vita Properties will be processed in accordance with the General Data Protection Regulation (GDPR). Your details may be retained for legitimate business purposes relating to property services. Full details of our Privacy Policy are available on request.

All rights reserved.