



Westfield

KIDDERPORE AVENUE, HAMPSTEAD, LONDON, NW3

£3,100



Available from 24 August 2024. Discover a stunning apartment situated on the ground floor of the highly sought-after Westfield block. This well-presented residence boasts an impressive 21 ft reception room, a separate fitted kitchen, a spacious 18 ft principal bedroom suite, a second double bedroom, and a second family bathroom.

Step onto the terrace and enjoy the picturesque views of the tranquil communal gardens, complete with convenient storage, lighting, and heating facilities. Residents of Westfield can benefit from 24-hour care provided by a friendly and efficient team of porters, manicured communal gardens, access to a pool and gym, as well as underground parking.

Located on Kidderpore Avenue, a charming tree-lined street connecting Platt's Lane to Heath Drive in north-west Hampstead, this apartment offers excellent proximity to public transport and the national road network. You'll have easy access to Brent Cross Shopping Centre, the A406 North Circular Road, the A41/A1 arterial route, and junction 1 of the M1 Motorway.





Additionally, you'll find an array of cafes, restaurants, and boutiques in the vibrant areas of Hampstead Village, Finchley Road, and West Hampstead. Experience the perfect blend of luxury, convenience, and tranquility in this exceptional apartment at Westfield. Contact us now to arrange a viewing and make it your dream home. Don't miss this opportunity!

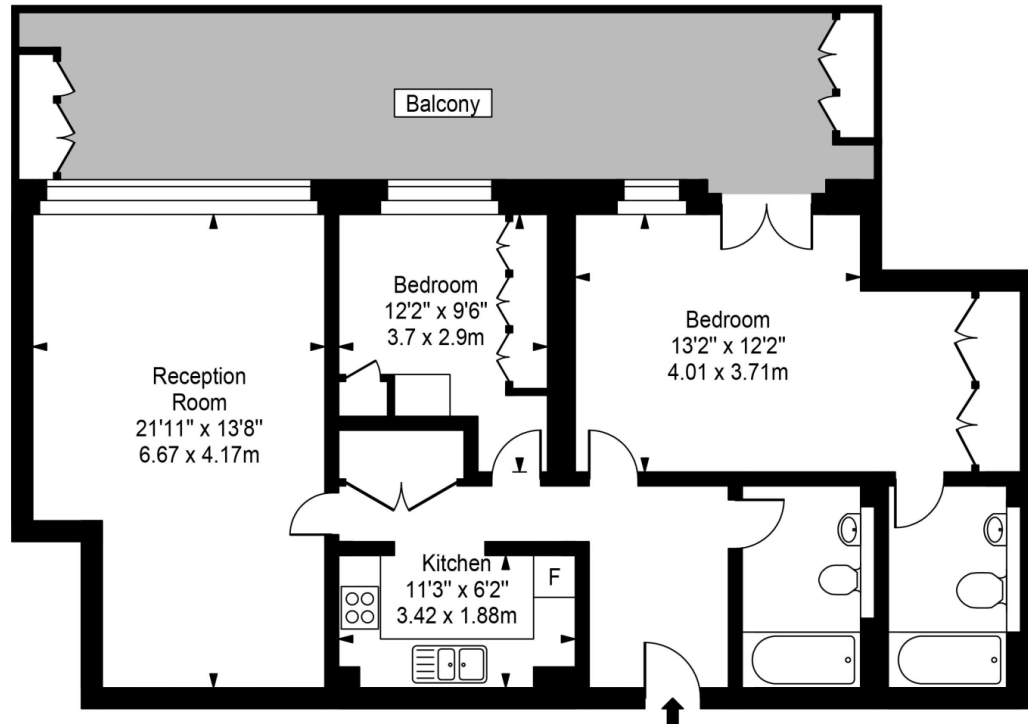
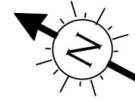








Westfield



Lower Ground Floor



Approx Gross Internal Area **972 Sq Ft - 90.32 Sq M**

For Illustration Purposes Only - Not To Scale
Floor plan by www.creativeplanettk.com

Particulars

Property

Westfield, Kidderpore Avenue, Hampstead, London, NW3
£3,100

Rooms



1



2



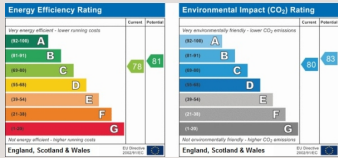
2

Features

- Balcony
- Modern
- Parking
- 24 hour Porter

Information

Council Tax



Zoe Browne

zoe.browne@vitaproperties.uk

+44 7880 277371



Scan for our website





T: +4420 7759 2199
E: enquiries@vitaproperties.uk

Disclaimer: These particulars are prepared as a general guide for prospective purchasers or tenants and do not constitute, nor constitute part of, an offer or contract. All statements, descriptions, and measurements contained herein are given in good faith and are believed to be correct at the time of printing, but any intending purchaser or tenant should not rely on them as statements or representations of fact and must satisfy themselves by inspection or otherwise as to their correctness. Floor plans and photographs are for illustrative purposes only and may not be to scale. The position and size of doors, windows, appliances, and other features are approximate. Anti-Money Laundering (AML): In line with the Money Laundering, Terrorist Financing and Transfer of Funds Regulations 2017, we are required to carry out customer due diligence checks. Buyers/tenants will be asked to provide proof of identity, address, and source of funds before a sale or rental can be agreed. Data Protection (GDPR): Personal information supplied to Vita Properties will be processed in accordance with the General Data Protection Regulation (GDPR). Your details may be retained for legitimate business purposes relating to property services. Full details of our Privacy Policy are available on request.

All rights reserved.