



Priory Road

SOUTH HAMPSTEAD, LONDON, NW6

£350



A bright one double bedroom apartment set on the first floor of a well maintained period conversion.

The property comprises a reception and separate kitchen to the front, a double bedroom with built-in storage and a large bathroom to the rear.

This lovely property is located within moments of the many amenities of West Hampstead and Finchley Road, as well as good transport links for the Jubilee and Metropolitan lines.

Available 5th July

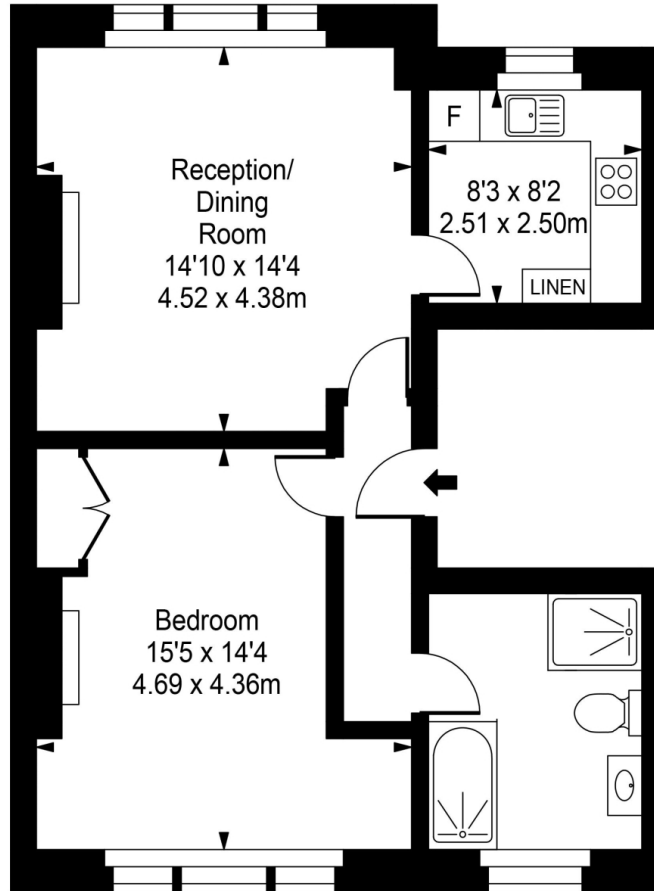
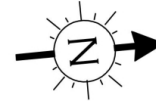








Priory Road



First Floor

Approx Gross Internal Area **604 Sq Ft - 56.11 Sq M**

FOR ILLUSTRATIVE PURPOSES ONLY. NOT TO SCALE.

Whilst every attempt has been made to ensure the accuracy of the floorplan shown, all measurements, positioning, fixtures, fittings and any other data shown are an approximate interpretation for illustrative purposes only and are not to scale. No responsibility is taken for any error, omission, misstatement or use of data shown.  
Floor plan by [www.bestangle.co.uk](http://www.bestangle.co.uk)

# Particulars

## Property

Priory Road, South Hampstead, London, NW6  
£350

## Rooms

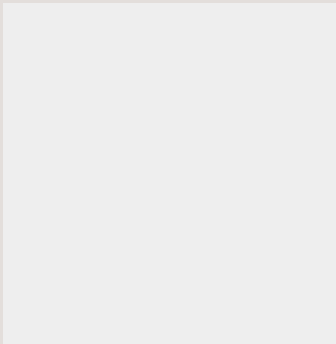


## Features

- Wooden floors in reception
- Large reception
- Seconds to West Hampstead tubes, shops and cafes
- Large bedroom

## Information

Council Tax



Oliver Kent

[oliver.kent@vitaproperties.uk](mailto:oliver.kent@vitaproperties.uk)  
+4477 7274 0351



Scan for our website





T: +4420 7759 2199

E: [enquiries@vitaproperties.uk](mailto:enquiries@vitaproperties.uk)

Disclaimer: These particulars are prepared as a general guide for prospective purchasers or tenants and do not constitute, nor constitute part of, an offer or contract. All statements, descriptions, and measurements contained herein are given in good faith and are believed to be correct at the time of printing, but any intending purchaser or tenant should not rely on them as statements or representations of fact and must satisfy themselves by inspection or otherwise as to their correctness. Floor plans and photographs are for illustrative purposes only and may not be to scale. The position and size of doors, windows, appliances, and other features are approximate. Anti-Money Laundering (AML): In line with the Money Laundering, Terrorist Financing and Transfer of Funds Regulations 2017, we are required to carry out customer due diligence checks. Buyers/tenants will be asked to provide proof of identity, address, and source of funds before a sale or rental can be agreed. Data Protection (GDPR): Personal information supplied to Vita Properties will be processed in accordance with the General Data Protection Regulation (GDPR). Your details may be retained for legitimate business purposes relating to property services. Full details of our Privacy Policy are available on request.

All rights reserved.