



Templewood Avenue

HAMPSTEAD, LONDON, NW3

£1,260



Available now and offered unfurnished is this stunning 2 bedroom, 2 bathroom ground floor apartment of approx.

1,600 sq.ft.

/ 148.6 sq.m.) forming part of an ambassadorial residence moments from The Heath and approx.

10 mins to Hampstead Village.

The uniquely large apartment benefits from having off street parking and private patio garden leading to stunning communal gardens.

There is also a spacious reception area with dining hall and stunning granite finished kitchen, master bedroom with vast en suite dressing room and beautifully finished en suite bathroom and 2nd bedroom with breathtaking bathroom with steam room.





Available now and offered unfurnished is this stunning 2 bedroom, 2 bathroom ground floor apartment of approx.

1,600 sq.ft.

(/ 148.6 sq.m.) forming part of an ambassadorial residence moments from The Heath and approx. 10 mins to Hampstead Village.

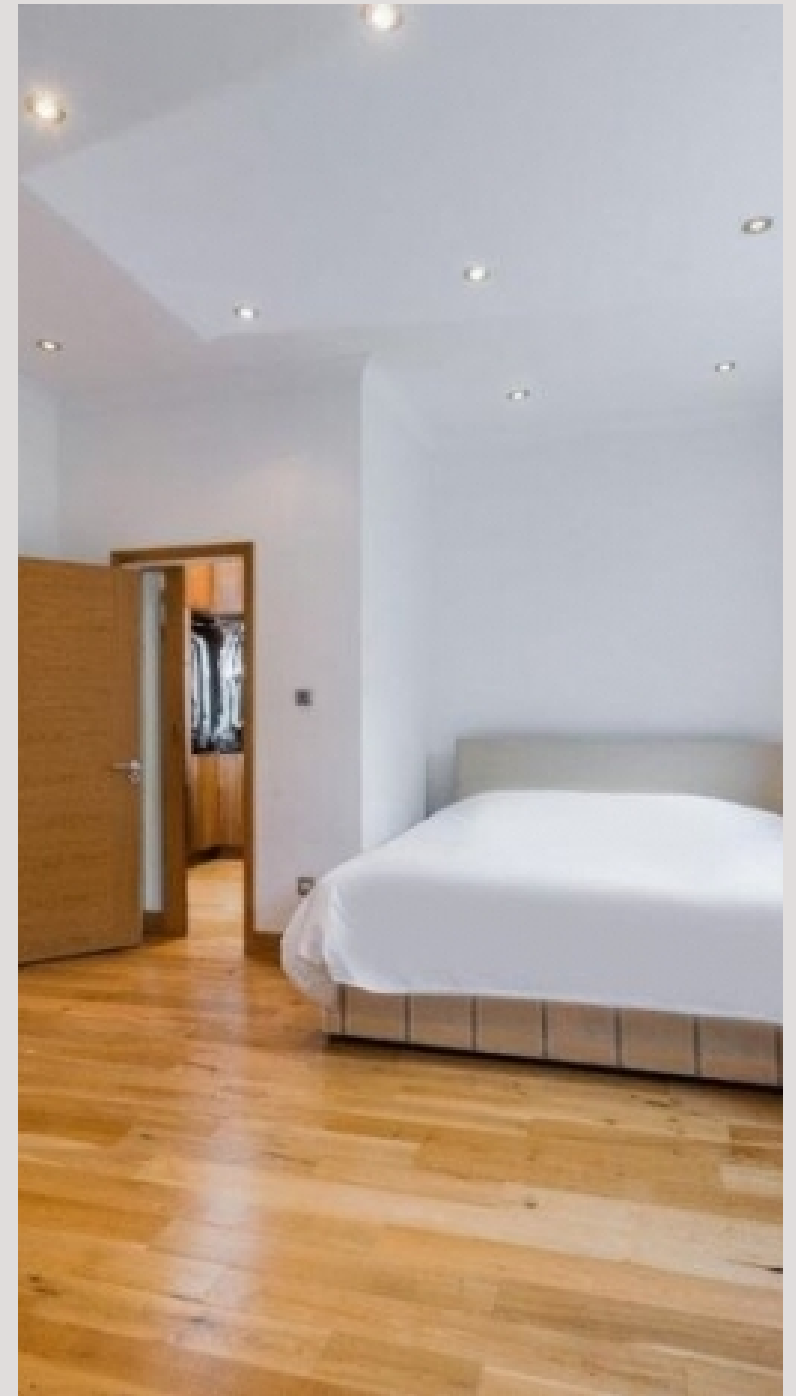
The uniquely large apartment benefits from having off street parking and private patio garden leading to stunning communal gardens.

There is also a spacious reception area with dining hall and stunning granite finished kitchen, master bedroom with vast en suite dressing room and beautifully finished en suite bathroom and 2nd bedroom with breathtaking bathroom with steam room.



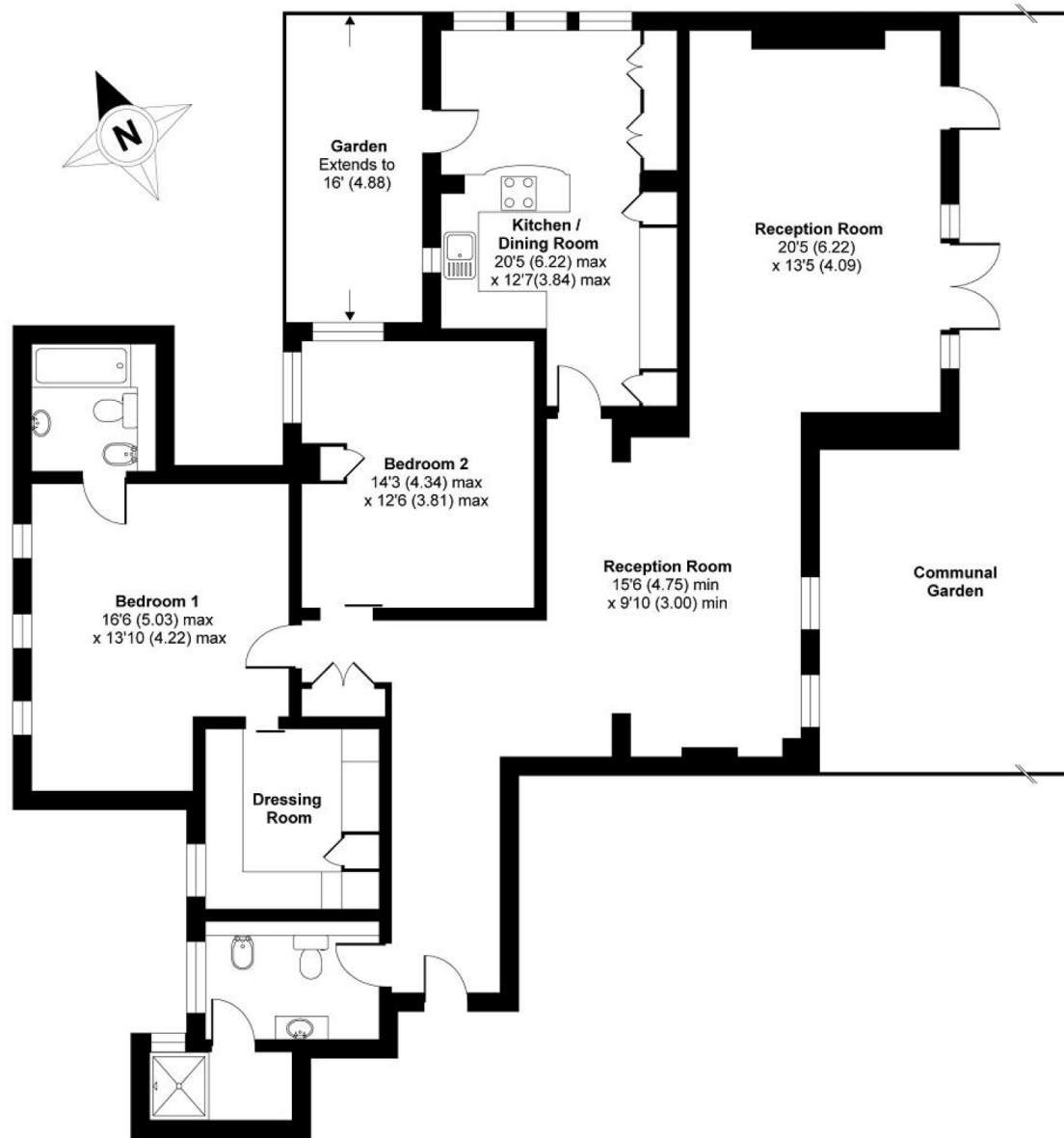






Templewood Ave NW3

APPROX. GROSS INTERNAL FLOOR AREA 1621 SQFT / 150.5 SQM



Particulars

Property

Templewood Avenue, Hampstead, London, NW3
£1,260

Rooms

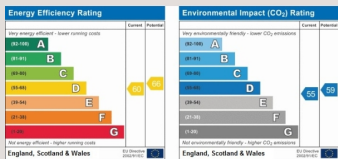


Features

- Moments to Hampstead Heath and a short stroll from Hampstead Village
- Modern finishes
- Steam room
- Managed

Information

Council Tax



Oliver Kent

oliver.kent@vitaproperties.uk
+4477 7274 0351



Scan for our website





T: +4420 7759 2199

E: enquiries@vitaproperties.uk

Disclaimer: These particulars are prepared as a general guide for prospective purchasers or tenants and do not constitute, nor constitute part of, an offer or contract. All statements, descriptions, and measurements contained herein are given in good faith and are believed to be correct at the time of printing, but any intending purchaser or tenant should not rely on them as statements or representations of fact and must satisfy themselves by inspection or otherwise as to their correctness. Floor plans and photographs are for illustrative purposes only and may not be to scale. The position and size of doors, windows, appliances, and other features are approximate. Anti-Money Laundering (AML): In line with the Money Laundering, Terrorist Financing and Transfer of Funds Regulations 2017, we are required to carry out customer due diligence checks. Buyers/tenants will be asked to provide proof of identity, address, and source of funds before a sale or rental can be agreed. Data Protection (GDPR): Personal information supplied to Vita Properties will be processed in accordance with the General Data Protection Regulation (GDPR). Your details may be retained for legitimate business purposes relating to property services. Full details of our Privacy Policy are available on request.

All rights reserved.