



Meard Street
SOHO, LONDON, W1F

£10,000



We are pleased to offer this beautiful Grade II* listed townhouse with private patio garden tucked away in a part pedestrianised street in the heart of Soho.

Benefiting from being recently refurbished throughout, the house comprises a master bedroom with en suite bathroom, 2nd bedroom, drawing room, family room, office, study, dining room, kitchen / breakfast room, staff / guest suite, utility room, internal storage vault and patio garden.

Meard Street runs roughly east to west between Wardour Street to the west and Dean Street to the east.

The west half is pedestrianised while the east half is a narrow single lane road.

The property is perfectly positioned for all the entertainment amenities of the West End as well as the boutique shops and restaurants of nearby Mayfair and Marylebone.

Leicester Square underground station (Northern and Piccadilly lines) is approximately 0.3 miles away and Tottenham Court Road underground station (Central and Northern lines, Crossrail link) approximately 0.4 miles away.

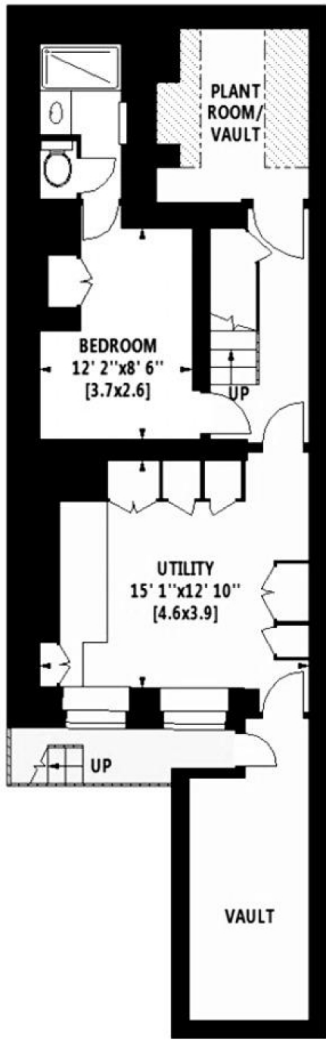




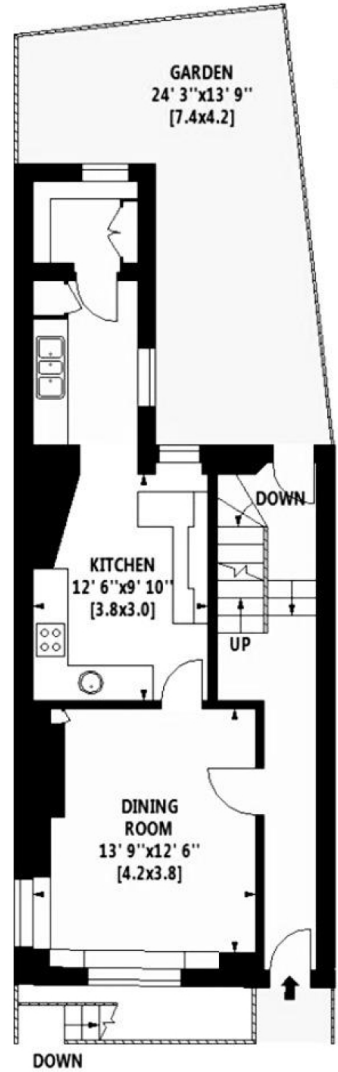









LOWER GROUND FLOOR

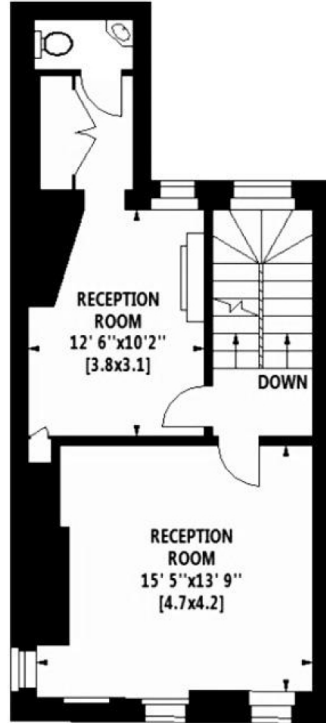


GROUND FLOOR

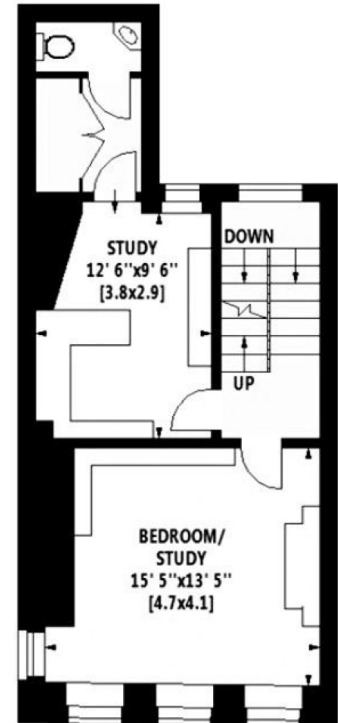
Gross Internal Area: 223.5 Sq. metres
(Including Vaults) 2406 Sq. feet

Gross Internal Area: 214 Sq. metres
(Excluding Vaults) 2303 Sq. feet

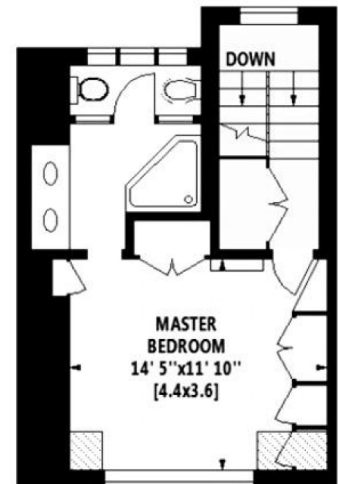
 Under 1.5m head height



FIRST FLOOR



SECOND FLOOR



THIRD FLOOR



Particulars

Property

Meard Street, Soho, London, W1F
£10,000

Rooms



2



4



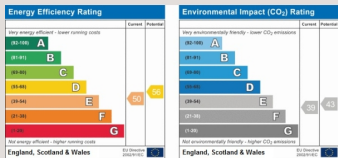
4

Features

- Located in the heart of Soho
- Trendy Throughout
- Private patio
- Grade II* listed townhouse

Information

Council Tax



Oliver Kent

oliver.kent@vitaproperties.uk
+4477 7274 0351



Scan for our website





T: +4420 7759 2199

E: enquiries@vitaproperties.uk

Disclaimer: These particulars are prepared as a general guide for prospective purchasers or tenants and do not constitute, nor constitute part of, an offer or contract. All statements, descriptions, and measurements contained herein are given in good faith and are believed to be correct at the time of printing, but any intending purchaser or tenant should not rely on them as statements or representations of fact and must satisfy themselves by inspection or otherwise as to their correctness. Floor plans and photographs are for illustrative purposes only and may not be to scale. The position and size of doors, windows, appliances, and other features are approximate. Anti-Money Laundering (AML): In line with the Money Laundering, Terrorist Financing and Transfer of Funds Regulations 2017, we are required to carry out customer due diligence checks. Buyers/tenants will be asked to provide proof of identity, address, and source of funds before a sale or rental can be agreed. Data Protection (GDPR): Personal information supplied to Vita Properties will be processed in accordance with the General Data Protection Regulation (GDPR). Your details may be retained for legitimate business purposes relating to property services. Full details of our Privacy Policy are available on request.

All rights reserved.