



## Manor Apartments

40-42 ABBEY ROAD, ST JOHNS WOOD, LONDON, NW8

£600



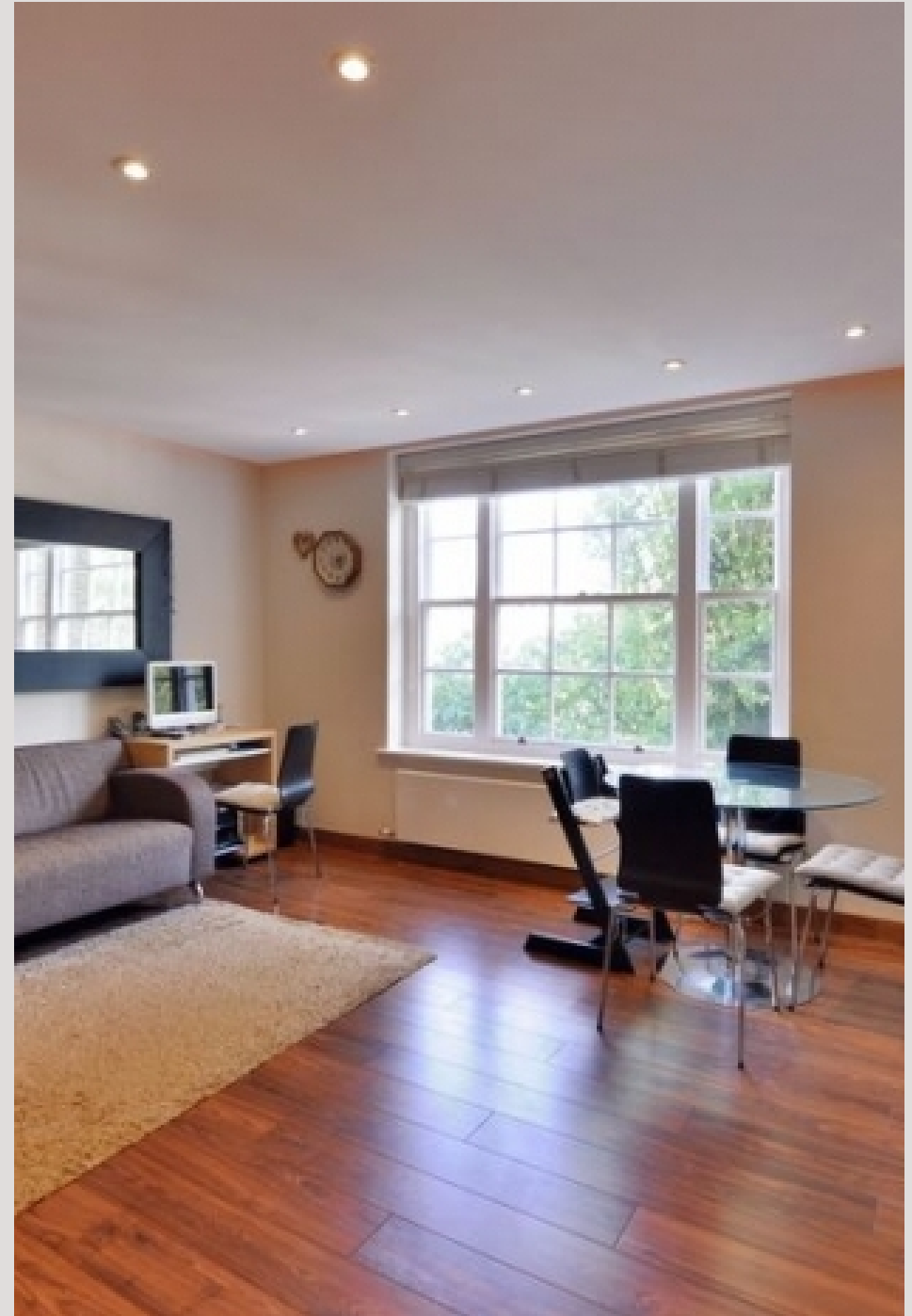
Available immediately is this is a stunning two double bedroom apartment set in a prestigious mansion block.

The property offers a large and spacious reception room, separate fitted kitchen and stylish bathroom.

Further benefits include wood floors, good storage space, entry phone and lift.

The apartment is well located along the famous Abbey Road in St John's Wood, local amenities and transport links.

Offered furnished or part furnished





Available immediately is this is a stunning two double bedroom apartment set in a prestigious mansion block.

The property offers a large and spacious reception room, separate fitted kitchen and stylish bathroom.

Further benefits include wood floors, good storage space, entry phone and lift.

The apartment is well located along the famous Abbey Road in St John's Wood, local amenities and transport links.

Offered furnished or part furnished

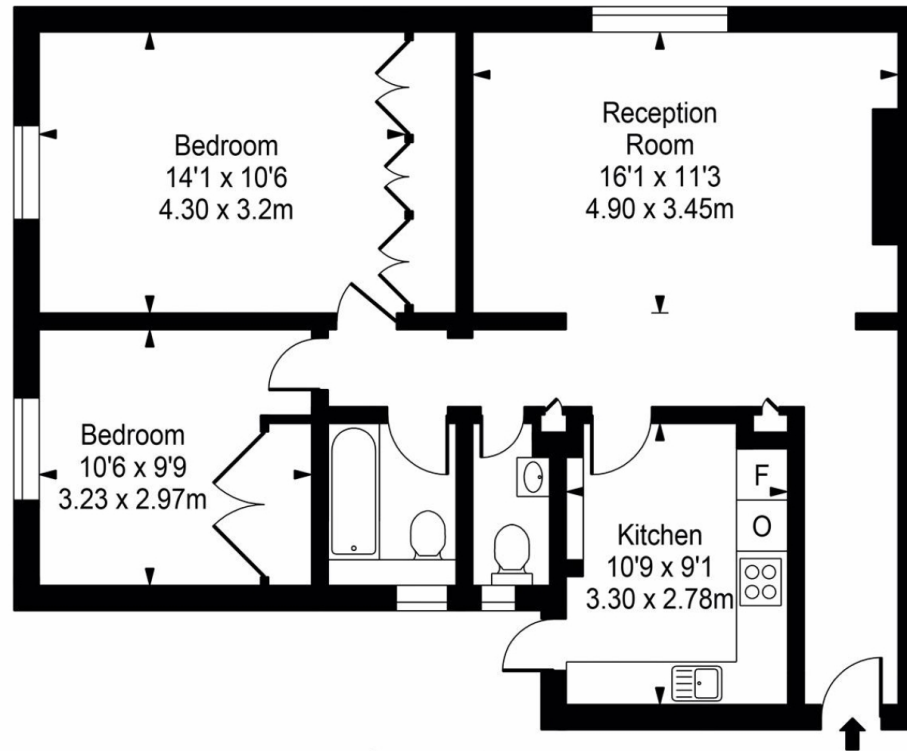
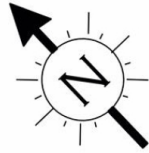








# Manor Apartments



Second Floor



Approx Gross Internal Area **765 Sq Ft - 71.11 Sq M**

FOR ILLUSTRATIVE PURPOSES ONLY. NOT TO SCALE.

Whilst every attempt has been made to ensure the accuracy of the floorplan shown, all measurements, positioning, fixtures, fittings and any other data shown are an approximate interpretation for illustrative purposes only and are not to scale. No responsibility is taken for any error, omission, miss-statement or use of data shown.  
Floor plan by [www.bestangle.co.uk](http://www.bestangle.co.uk)

# Particulars

## Property

Manor Apartments, 40-42 Abbey Road, St Johns Wood, ~~£6000~~on, NW8

## Rooms

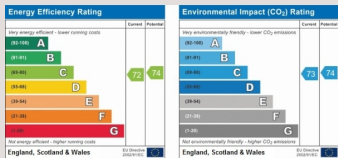


## Features

- Modern
- Wooden floors
- An abundance of storage
- Lift

## Information

Council Tax



Oliver Kent

oliver.kent@vitaproperties.uk  
+4477 7274 0351



Scan for our website





T: +4420 7759 2199

E: [enquiries@vitaproperties.uk](mailto:enquiries@vitaproperties.uk)

Disclaimer: These particulars are prepared as a general guide for prospective purchasers or tenants and do not constitute, nor constitute part of, an offer or contract. All statements, descriptions, and measurements contained herein are given in good faith and are believed to be correct at the time of printing, but any intending purchaser or tenant should not rely on them as statements or representations of fact and must satisfy themselves by inspection or otherwise as to their correctness. Floor plans and photographs are for illustrative purposes only and may not be to scale. The position and size of doors, windows, appliances, and other features are approximate. Anti-Money Laundering (AML): In line with the Money Laundering, Terrorist Financing and Transfer of Funds Regulations 2017, we are required to carry out customer due diligence checks. Buyers/tenants will be asked to provide proof of identity, address, and source of funds before a sale or rental can be agreed. Data Protection (GDPR): Personal information supplied to Vita Properties will be processed in accordance with the General Data Protection Regulation (GDPR). Your details may be retained for legitimate business purposes relating to property services. Full details of our Privacy Policy are available on request.

All rights reserved.