



Chatsworth Road

MAPESBURY CONSERVATION, LONDON, NW2

£725,000



We are delighted to offer as sole agents this large two double bedroom apartment (842 Sq Ft) situated on the first floor in this property, which benefits from a spacious lounge/dining room, large modern kitchen with direct access to a private terrace and access to communal garden as well as off street parking.

This property has been maintained and decorated to a high standard.

This apartment is conveniently situated for shops, restaurants and transport facilities.

Kilburn (jubilee line) is a 3 minute walk and Brondesbury (overground) is a 5 minute walk.

This tastefully decorated home benefits from a lot of natural light is offered with a long lease





We are delighted to offer as sole agents this large two double bedroom apartment (842 Sq Ft) situated on the first floor in this property, which benefits from a spacious lounge/dining room, large modern kitchen with direct access to a private terrace and access to communal garden as well as off street parking.

This property has been maintained and decorated to a high standard.

This apartment is conveniently situated for shops, restaurants and transport facilities.

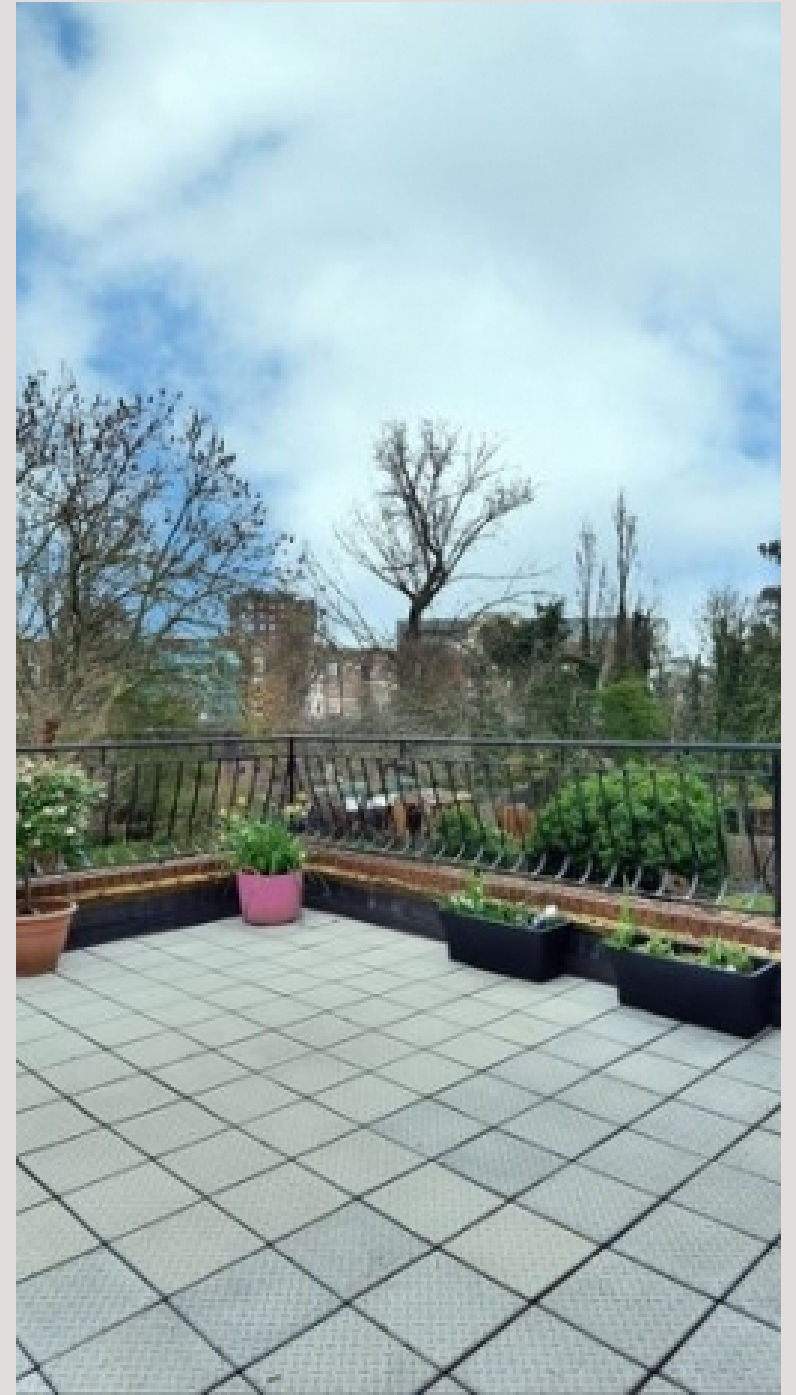
Kilburn (jubilee line) is a 3 minute walk and Brondesbury (overground) is a 5 minute walk.

This tastefully decorated home benefits from a lot of natural light is offered with a long lease

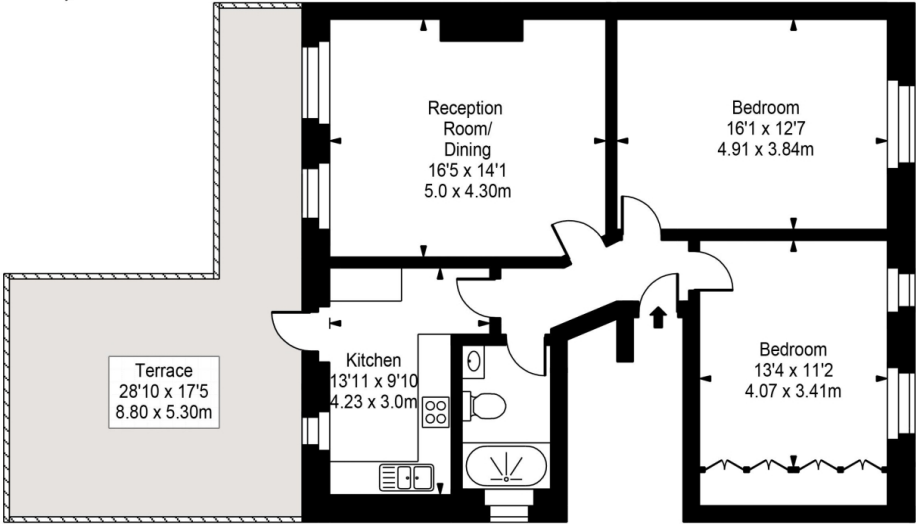








Chatsworth Road



First Floor

Approx Gross Internal Area **842 Sq Ft - 78.21 Sq M**

For Illustration Purposes Only - Not To Scale
Floor plan by www.bestangle.co.uk

Particulars

Property

Chatsworth Road, Mapesbury Conservation, London, NW2
£725,000

Rooms



1



1



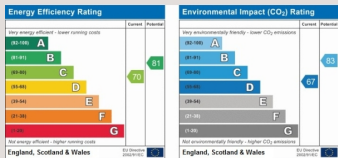
2

Features

- A large private roof terrace perfect for entertaining
- Spacious and bright living room
- A fully fitted eat in kitchen
- Off street parking

Information

Council Tax



Oliver Kent

oliver.kent@vitaproperties.uk
+4477 7274 0351



Scan for our website





T: +4420 7759 2199
E: enquiries@vitaproperties.uk

Disclaimer: These particulars are prepared as a general guide for prospective purchasers or tenants and do not constitute, nor constitute part of, an offer or contract. All statements, descriptions, and measurements contained herein are given in good faith and are believed to be correct at the time of printing, but any intending purchaser or tenant should not rely on them as statements or representations of fact and must satisfy themselves by inspection or otherwise as to their correctness. Floor plans and photographs are for illustrative purposes only and may not be to scale. The position and size of doors, windows, appliances, and other features are approximate. Anti-Money Laundering (AML): In line with the Money Laundering, Terrorist Financing and Transfer of Funds Regulations 2017, we are required to carry out customer due diligence checks. Buyers/tenants will be asked to provide proof of identity, address, and source of funds before a sale or rental can be agreed. Data Protection (GDPR): Personal information supplied to Vita Properties will be processed in accordance with the General Data Protection Regulation (GDPR). Your details may be retained for legitimate business purposes relating to property services. Full details of our Privacy Policy are available on request.

All rights reserved.