



Platts Lane

HAMPSTEAD, LONDON, NW3

£1,350,000



A delightful 3 Bedroom Semi Detached family residence located within this sought after residential street.

The property benefits 2 Bathrooms, an eat in kitchen/breakfast room leading to a large conservatory, a Private Rear Garden, Communal Tennis Courts and Off Street Parking.

Platts Lane is conveniently situated within a short distance to the popular Hampstead Village that offers a variety of fine shops, restaurants, and easy transport links that includes Hampstead Tube Station (Northern Line) and Belsize Park Tube Station (Northern Line).

The O2 Centre is also within a close proximity offering amenities and a Vue Cinema.

Finchley Road Tube Station (Jubilee Line) and Swiss Cottage Tube Station (Jubilee Line) is also within close reach.

Offering the Freehold with no upper chain





A delightful 3 Bedroom Semi Detached family residence located within this sought after residential street.

The property benefits 2 Bathrooms, an eat in kitchen/breakfast room leading to a large conservatory, a Private Rear Garden, Communal Tennis Courts and Off Street Parking.

Platts Lane is conveniently situated within a short distance to the popular Hampstead Village that offers a variety of fine shops, restaurants, and easy transport links that includes Hampstead Tube Station (Northern Line) and Belsize Park Tube Station (Northern Line).

The O2 Centre is also within a close proximity offering amenities and a Vue Cinema.

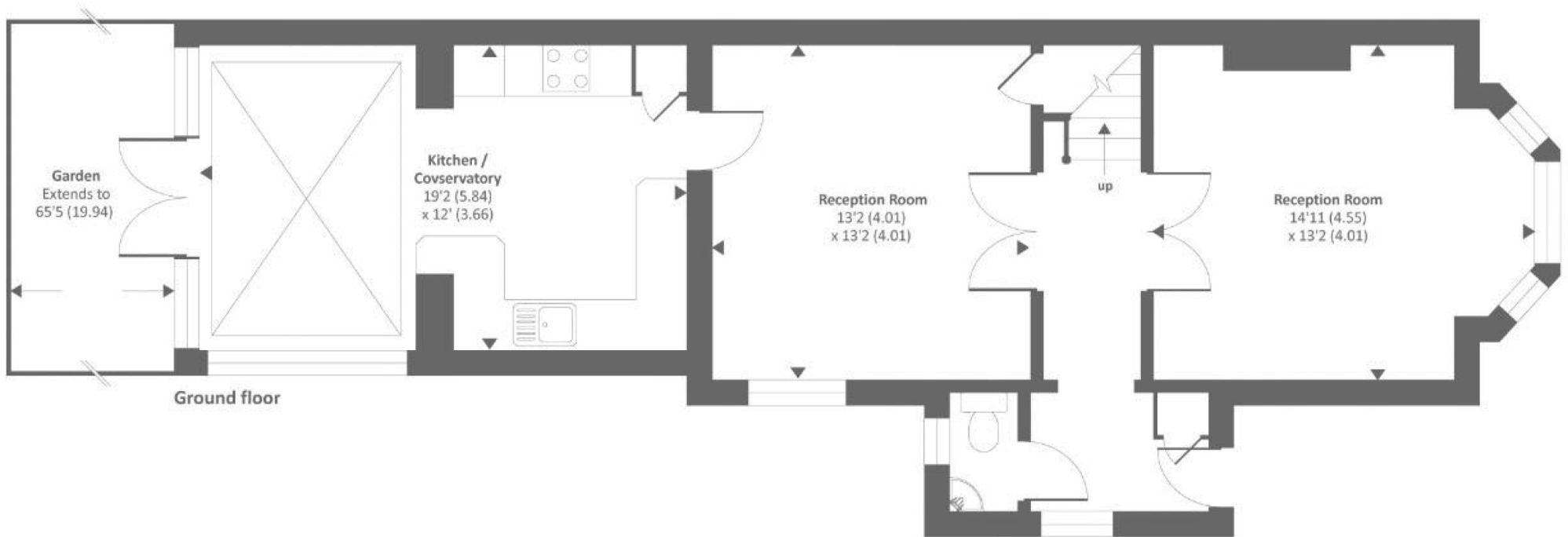
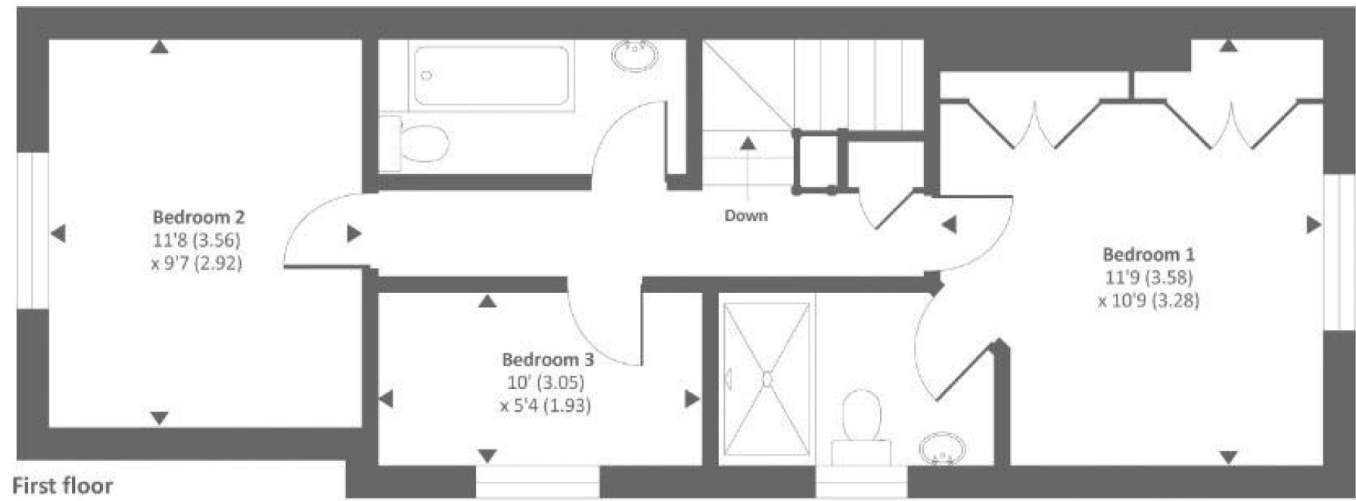
Finchley Road Tube Station (Jubilee Line) and Swiss Cottage Tube Station (Jubilee Line) is also within close reach.

Offering the Freehold with no upper chain









Approx. gross internal floor area 1215 SQFT / 112 SQM

Particulars

Property

Platts Lane, Hampstead, London, NW3
£1,350,000

Rooms



2



2



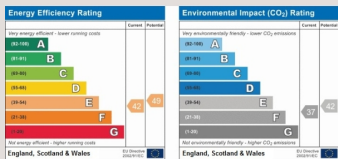
3

Features

- Communal Tennis Courts
- Off street parking
- Conservatory
- Semi Detached House

Information

Council Tax



Oliver Kent

oliver.kent@vitaproperties.uk
+4477 7274 0351



Scan for our website





T: +4420 7759 2199
E: enquiries@vitaproperties.uk

Disclaimer: These particulars are prepared as a general guide for prospective purchasers or tenants and do not constitute, nor constitute part of, an offer or contract. All statements, descriptions, and measurements contained herein are given in good faith and are believed to be correct at the time of printing, but any intending purchaser or tenant should not rely on them as statements or representations of fact and must satisfy themselves by inspection or otherwise as to their correctness. Floor plans and photographs are for illustrative purposes only and may not be to scale. The position and size of doors, windows, appliances, and other features are approximate. Anti-Money Laundering (AML): In line with the Money Laundering, Terrorist Financing and Transfer of Funds Regulations 2017, we are required to carry out customer due diligence checks. Buyers/tenants will be asked to provide proof of identity, address, and source of funds before a sale or rental can be agreed. Data Protection (GDPR): Personal information supplied to Vita Properties will be processed in accordance with the General Data Protection Regulation (GDPR). Your details may be retained for legitimate business purposes relating to property services. Full details of our Privacy Policy are available on request.

All rights reserved.