



Greville Road

LONDON. NW6

£550



Available immediately is this stylish, newly refurbished three bedroom upper maisonette (1113sqft/103.3sqm) situated on the first and second floors of an attractive period house located within 0.1 miles of Kilburn High Road Overground and 0.3 miles of Kilburn Park tube station.

This stunning apartment further benefits a double volume reception with dining area, storage in the bedrooms, a fully fitted kitchen and two bathrooms.

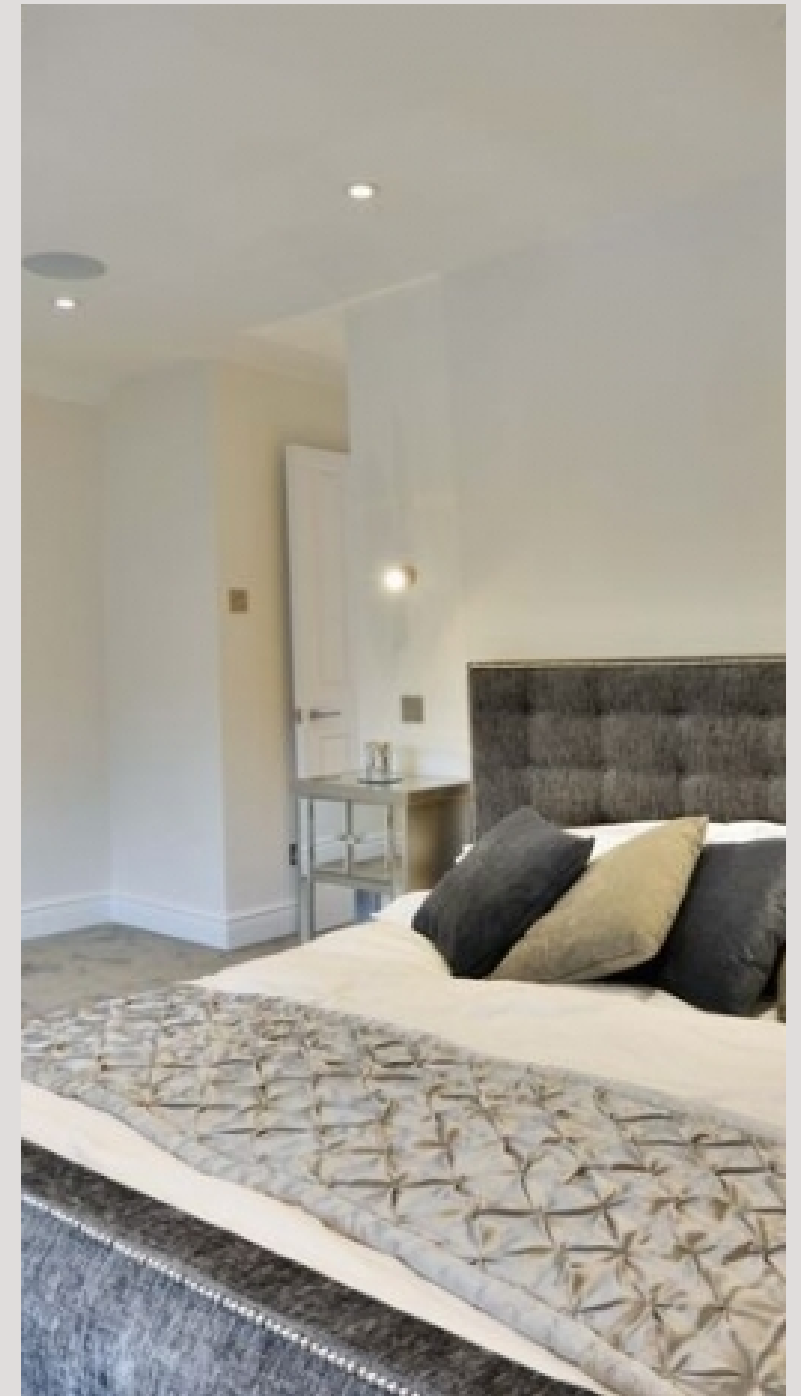
Offered furnished or unfurnished



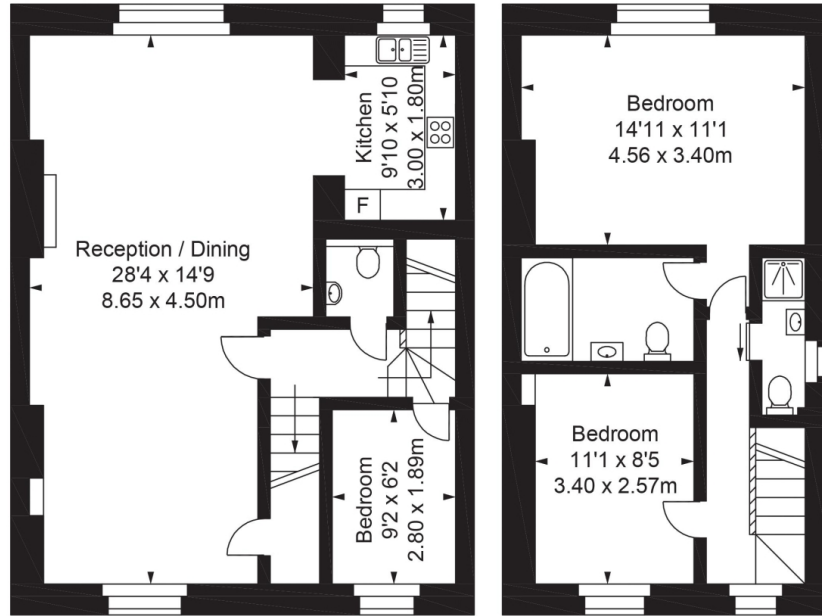








# Greville Road



First Floor

Second Floor



Ground Floor



**Approx Gross Internal Area 1107 Sq Ft - 102.89 Sq M**

FOR ILLUSTRATIVE PURPOSES ONLY. NOT TO SCALE.

Whilst every attempt has been made to ensure the accuracy of the floorplan shown, all measurements, positioning, fixtures, fittings and any other data shown are an approximate interpretation for illustrative purposes only and are not to scale. No responsibility is taken for any error, omission, miss-statement or use of data shown.

Floor plan by [www.bestangle.co.uk](http://www.bestangle.co.uk)

# Particulars

## Property

Greville Road, London. NW6  
£550

## Rooms



1



2



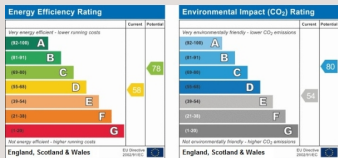
3

## Features

- Large double bedrooms with stoarge
- Double volume reception with dining area
- Offered furnished or unfurnished
- Brand newly refurbished

## Information

Council Tax

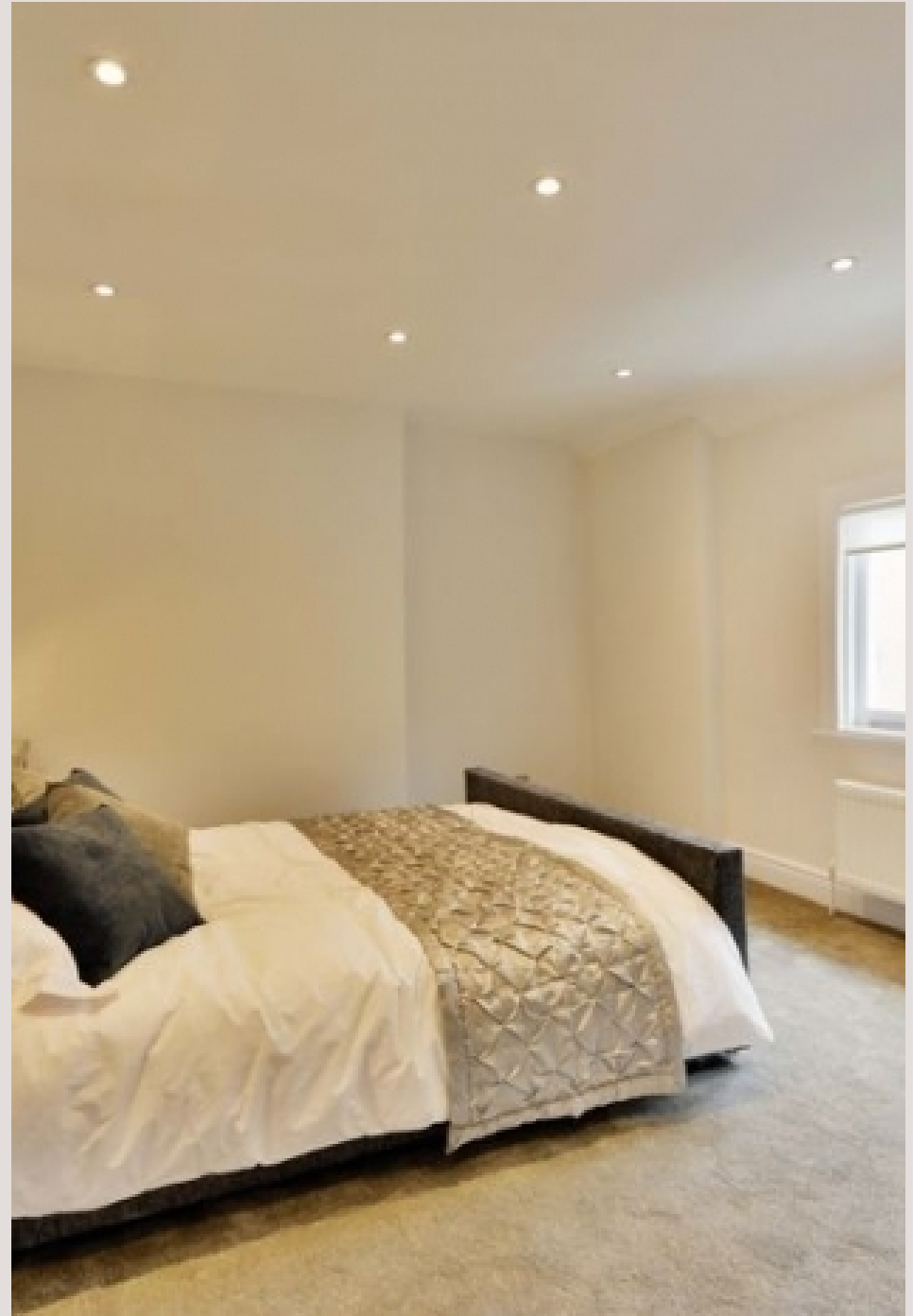


Oliver Kent

oliver.kent@vitaproperties.uk  
+4477 7274 0351



Scan for our website





T: +4420 7759 2199

E: [enquiries@vitaproperties.uk](mailto:enquiries@vitaproperties.uk)

Disclaimer: These particulars are prepared as a general guide for prospective purchasers or tenants and do not constitute, nor constitute part of, an offer or contract. All statements, descriptions, and measurements contained herein are given in good faith and are believed to be correct at the time of printing, but any intending purchaser or tenant should not rely on them as statements or representations of fact and must satisfy themselves by inspection or otherwise as to their correctness. Floor plans and photographs are for illustrative purposes only and may not be to scale. The position and size of doors, windows, appliances, and other features are approximate. Anti-Money Laundering (AML): In line with the Money Laundering, Terrorist Financing and Transfer of Funds Regulations 2017, we are required to carry out customer due diligence checks. Buyers/tenants will be asked to provide proof of identity, address, and source of funds before a sale or rental can be agreed. Data Protection (GDPR): Personal information supplied to Vita Properties will be processed in accordance with the General Data Protection Regulation (GDPR). Your details may be retained for legitimate business purposes relating to property services. Full details of our Privacy Policy are available on request.

All rights reserved.