



Princess Mews
BELSIZE PARK, LONDON, NW3

£750



Available 15 June 2017 - A recently refurbished two bedroom mews house arranged over three floors and set within this attractive cobbled mews in Belsize Village.

The property boasts a bright and airy reception room with a stunning Juliette balcony and a modern fully fitted kitchen, principal bedroom with built-in storage and en-suite shower room, further second double bedroom, family bathroom and ample storage throughout.

Ideally located for the popular restaurants and cafes of Belsize Village, as well as the transport links of Swiss Cottage

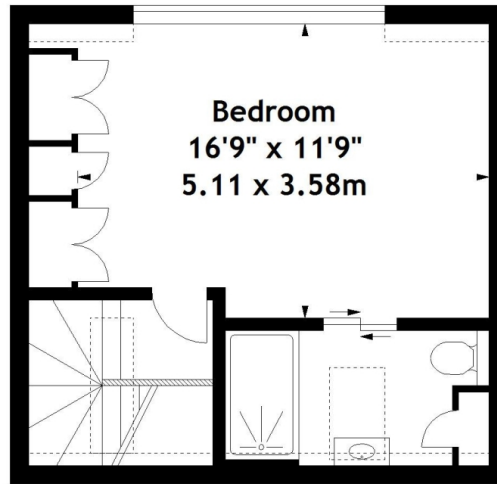










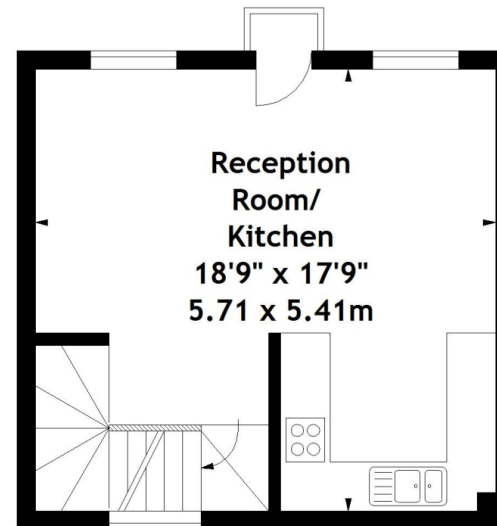
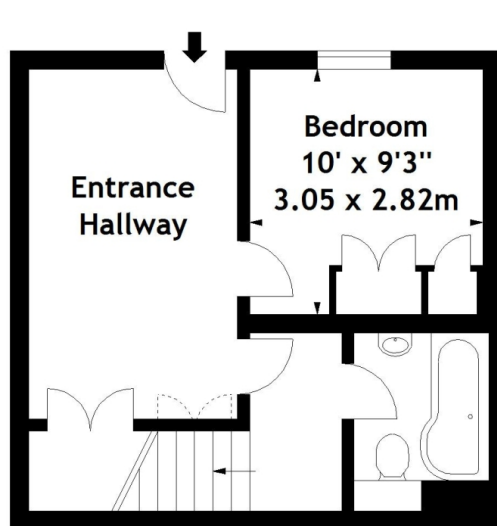


Princess Mews, NW3

Approx. Gross Internal Area
1011 Sq Ft - 93.92 Sq M



Second Floor



Ground Floor

First Floor

Measured in accordance with RICS guidelines. Every attempt is made to ensure accuracy, however all measurements are approximate. This floor plan is for illustrative purposes only and is not to scale.
© Datography Ltd 2016
Photographs * Floorplans * Virtual Tours
Tel: 0845 643 4401 www.datography.com

Particulars

Property

Princess Mews, Belsize Park, London, NW3
£750

Rooms

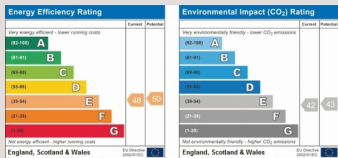


Features

- Available 15 June 2017
- Parking
- Balcony
- Two bedrooms - Two bathrooms

Information

Council Tax



Oliver Kent

oliver.kent@vitaproperties.uk
+4477 7274 0351



Scan for our website





T: +4420 7759 2199

E: enquiries@vitaproperties.uk

Disclaimer: These particulars are prepared as a general guide for prospective purchasers or tenants and do not constitute, nor constitute part of, an offer or contract. All statements, descriptions, and measurements contained herein are given in good faith and are believed to be correct at the time of printing, but any intending purchaser or tenant should not rely on them as statements or representations of fact and must satisfy themselves by inspection or otherwise as to their correctness. Floor plans and photographs are for illustrative purposes only and may not be to scale. The position and size of doors, windows, appliances, and other features are approximate. Anti-Money Laundering (AML): In line with the Money Laundering, Terrorist Financing and Transfer of Funds Regulations 2017, we are required to carry out customer due diligence checks. Buyers/tenants will be asked to provide proof of identity, address, and source of funds before a sale or rental can be agreed. Data Protection (GDPR): Personal information supplied to Vita Properties will be processed in accordance with the General Data Protection Regulation (GDPR). Your details may be retained for legitimate business purposes relating to property services. Full details of our Privacy Policy are available on request.

All rights reserved.