



Westfield

KIDDERPORE AVENUE, HAMPSTEAD, LONDON NW3

£1,153



Luxurious 3-Bedroom Ground Floor Flat with Private Patio - Prime Location!

luxury living in this immaculately refurbished three-bedroom, two-bathroom flat nestled on the ground floor of an upscale apartment complex. Boasting contemporary upgrades and meticulous attention to detail, this residence promises a sophisticated lifestyle.

Step into a welcoming open-plan kitchen and reception moving on to double doors seamlessly connect this inviting space to your own private terrace, offering serene views of the meticulously manicured communal gardens.

This stylish flat features three generously sized double bedrooms, each exuding comfort and elegance. The master bedroom is a haven of relaxation with its en-suite bathroom and convenient built-in wardrobes, providing ample storage space, air conditioning and a second large private outdoor space.





Practicality meets luxury with a utility cupboard housing separate washer and dryer units, ensuring convenience and efficiency in your daily routines. Additionally, the inclusion of air conditioning ensures year-round comfort, under floor heating throughout, alarm system and two secure underground parking spaces offering total convenience for residents.

Situated in a sought-after location, this residence epitomizes modern urban living at its finest, the residents at Westfield benefit from a dedicated 24-hour concierge, indoor swimming pool, gymnasium, secure designated underground parking space and use of extensive, well-manicured communal gardens. Set on Kidderpore Avenue, NW3 and within walking distance to both Finchley Road Underground (Metropolitan & Circle), and Finchley Road and Frognal (Overground)







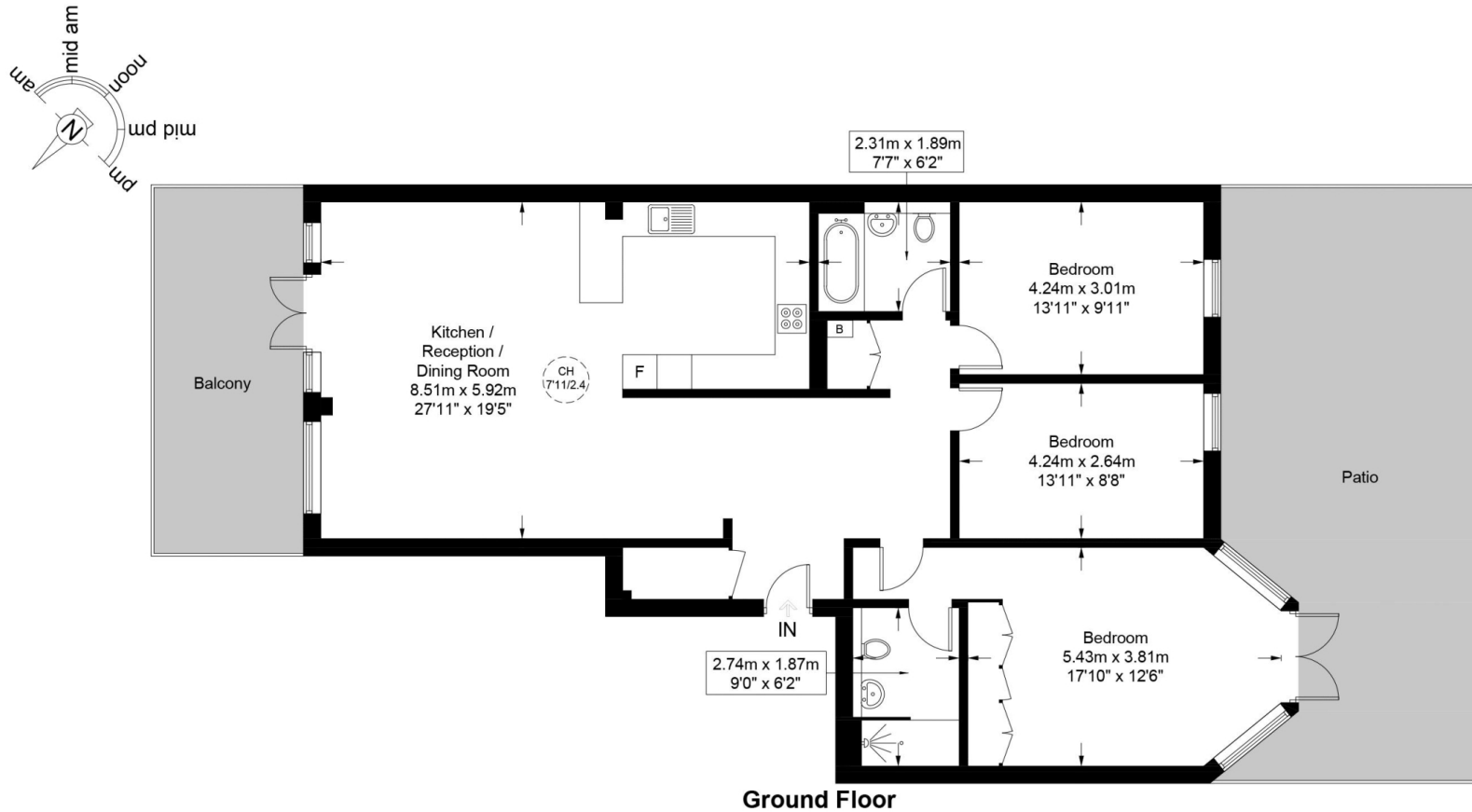


Scan for out video walkthrough



Westfield Kidderpore Avenue, NW3

Approximate Gross Internal Area = 1316 sq ft / 122.3 sq m



This plan is for layout guidance only and is not drawn to scale unless stated. All dimensions, including windows, doors, and the Total Gross Internal Area (GIA), are approximate. For precise measurements, please consult a qualified architect or surveyor before making any decisions based on this plan.



Particulars

Property

Westfield, Kidderpore Avenue, Hampstead, London NW3
£1,153

Rooms



1



2



3

Features

- Two secure parking spaces
- Access to Two Private Terraces
- Portered
- Gym & Swimming Pool Facility

Information

Council Tax

Score	Energy rating	Current	Potential
92+	A		
81-91	B		
69-80	C	76 C	77 C
55-68	D		
39-54	E		
21-38	F		
1-20	G		



Oliver Kent

oliver.kent@vitaproperties.uk
+4477 7274 0351



Scan for our website





T: +4420 7759 2199

E: enquiries@vitaproperties.uk

Disclaimer: These particulars are prepared as a general guide for prospective purchasers or tenants and do not constitute, nor constitute part of, an offer or contract. All statements, descriptions, and measurements contained herein are given in good faith and are believed to be correct at the time of printing, but any intending purchaser or tenant should not rely on them as statements or representations of fact and must satisfy themselves by inspection or otherwise as to their correctness. Floor plans and photographs are for illustrative purposes only and may not be to scale. The position and size of doors, windows, appliances, and other features are approximate. Anti-Money Laundering (AML): In line with the Money Laundering, Terrorist Financing and Transfer of Funds Regulations 2017, we are required to carry out customer due diligence checks. Buyers/tenants will be asked to provide proof of identity, address, and source of funds before a sale or rental can be agreed. Data Protection (GDPR): Personal information supplied to Vita Properties will be processed in accordance with the General Data Protection Regulation (GDPR). Your details may be retained for legitimate business purposes relating to property services. Full details of our Privacy Policy are available on request.

All rights reserved.