



## Flask Walk

HAMPSTEAD, LONDON, NW3

£475

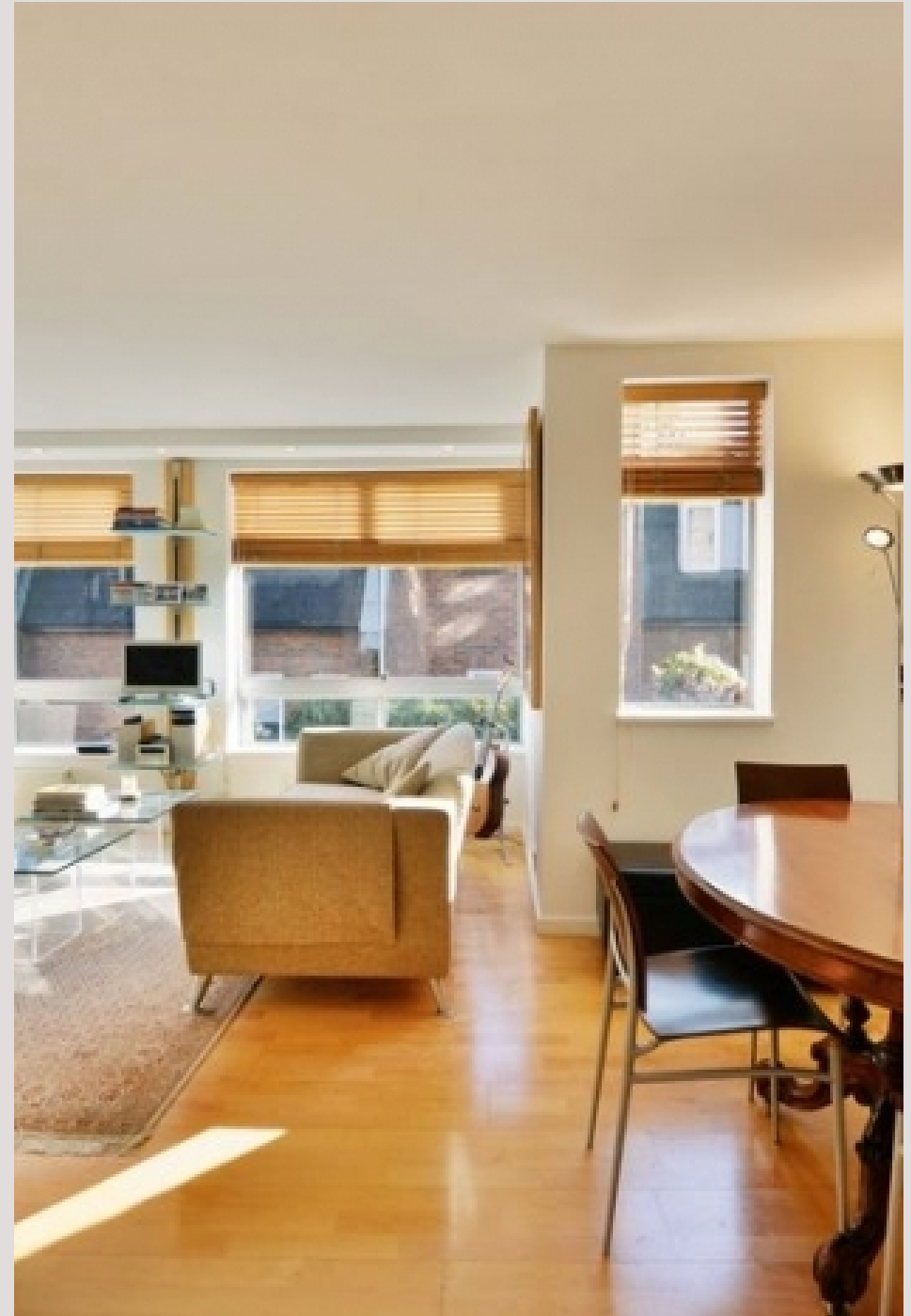


Available 24th April is this stunning one bed apartment set within a beautiful modern purpose built 1970s block consisting of three flats and one house and situated in the heart of Hampstead Village.

Located within moment to all the shops, amenities and Hampstead tube station.

The property benefits from its own entrance, wooden floors through-out, a well laid out reception with a semi open plan fitted kitchen, a fully tiled modern bathroom and bedroom with fitted wardrobes.

Offered Furnished.





Available 24th April is this stunning one bed apartment set within a beautiful modern purpose built 1970s block consisting of three flats and one house and situated in the heart of Hampstead Village.

Located within moment to all the shops, amenities and Hampstead tube station.

The property benefits from its own entrance, wooden floors through-out, a well laid out reception with a semi open plan fitted kitchen, a fully tiled modern bathroom and bedroom with fitted wardrobes.

Offered Furnished.

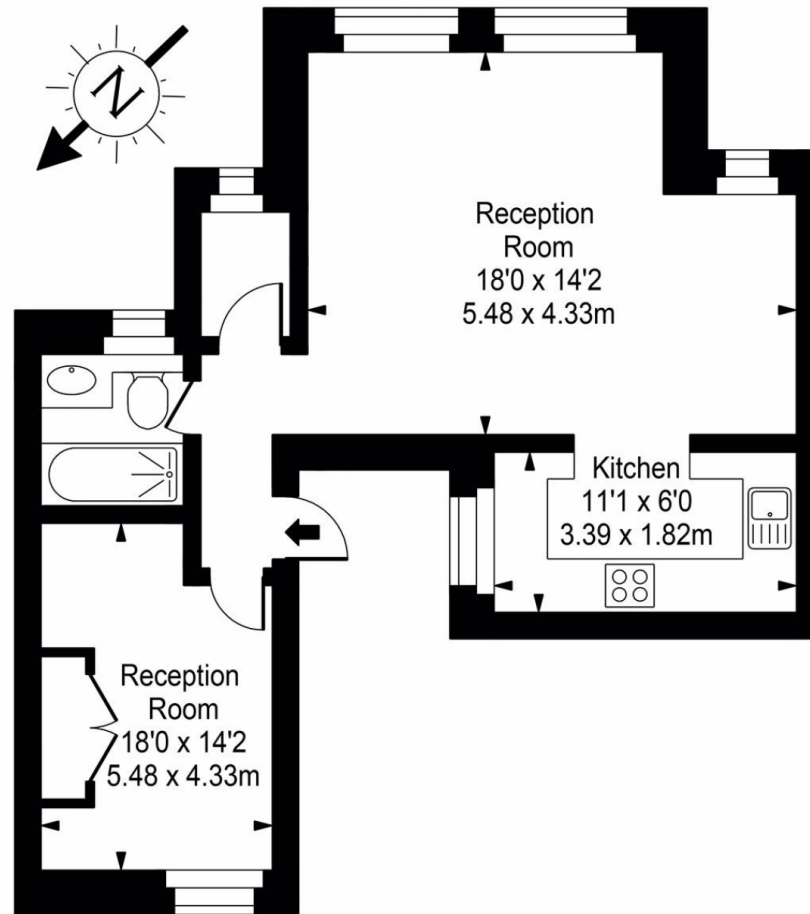








## Flask Walk



First Floor



Approx Gross Internal Area **489 Sq Ft - 45.41 Sq M**

For Illustration Purposes Only - Not To Scale  
Floor plan by [www.bestangle.co.uk](http://www.bestangle.co.uk)

# Particulars

## Property

Flask Walk, Hampstead, London, NW3  
£475

## Rooms



## Features

- Offering an abundance of natural light
- Located within a stones throw of Hampstead Village
- Own Entrance
- Wooden floors throughout

## Information

Council Tax



Oliver Kent

[oliver.kent@vitaproperties.uk](mailto:oliver.kent@vitaproperties.uk)  
+4477 7274 0351



Scan for our website





T: +4420 7759 2199  
E: [enquiries@vitaproperties.uk](mailto:enquiries@vitaproperties.uk)

Disclaimer: These particulars are prepared as a general guide for prospective purchasers or tenants and do not constitute, nor constitute part of, an offer or contract. All statements, descriptions, and measurements contained herein are given in good faith and are believed to be correct at the time of printing, but any intending purchaser or tenant should not rely on them as statements or representations of fact and must satisfy themselves by inspection or otherwise as to their correctness. Floor plans and photographs are for illustrative purposes only and may not be to scale. The position and size of doors, windows, appliances, and other features are approximate. Anti-Money Laundering (AML): In line with the Money Laundering, Terrorist Financing and Transfer of Funds Regulations 2017, we are required to carry out customer due diligence checks. Buyers/tenants will be asked to provide proof of identity, address, and source of funds before a sale or rental can be agreed. Data Protection (GDPR): Personal information supplied to Vita Properties will be processed in accordance with the General Data Protection Regulation (GDPR). Your details may be retained for legitimate business purposes relating to property services. Full details of our Privacy Policy are available on request.

All rights reserved.