



East Heath Road
HAMPSTEAD, LONDON, NW3

£699,950



Offered chain free - Over looking Hampstead Heath and within easy access of Hampstead Village this lovely one bedroom apartment forms part of this imposing and sought after, purpose built, 1920s block built on the site of a house owned by Hampstead historian Thomas J.

Barratt.

Spanning approximately 622 sq.

ft.

(59 sq.

M) the flat additionally comprises large bathroom, separate kitchen, reception room with separate dining area.

Although situated on the lower ground floor the flat is light and bright thanks in part to the high ceilings and large windows.

Other benefits include communal hot water and heating, off street parking, wood floors, double-glazing, private entrance and communal gardens





Offered chain free - Over looking Hampstead Heath and within easy access of Hampstead Village this lovely one bedroom apartment forms part of this imposing and sought after, purpose built, 1920s block built on the site of a house owned by Hampstead historian Thomas J. Barratt.

Spanning approximately 622 sq. ft.

(59 sq.

M) the flat additionally comprises large bathroom, separate kitchen, reception room with separate dining area.

Although situated on the lower ground floor the flat is light and bright thanks in part to the high ceilings and large windows.

Other benefits include communal hot water and heating, off street parking, wood floors, double-glazing, private entrance and communal gardens

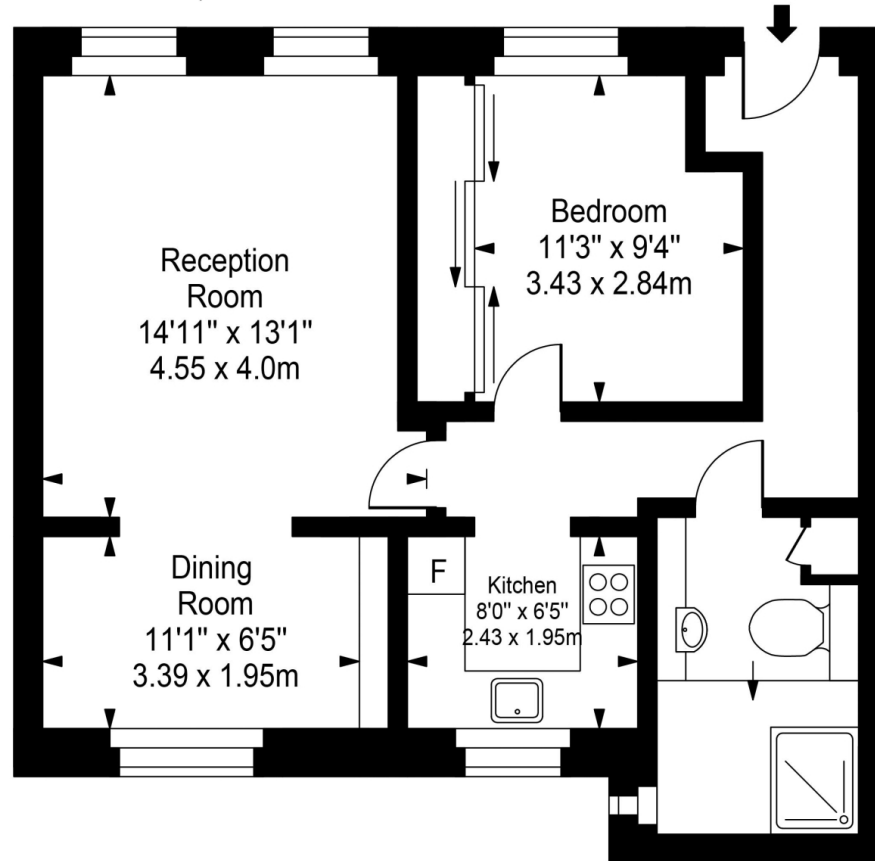
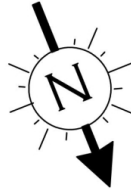








Bell Moor



Ground Floor



Approx Gross Internal Area **647 Sq Ft - 60.11 Sq M**

For Illustration Purposes Only - Not To Scale
Floor plan by www.creativeplanettk.com

Particulars

Property

East Heath Road, Hampstead, London, NW3
£699,950

Rooms



Features

- Seconds from Hampstead Heath
- Wooden floors
- Allocated parking space
- Close to Hampstead Village

Information

Council Tax



Oliver Kent

oliver.kent@vitaproperties.uk
+4477 7274 0351



Scan for our website





T: +4420 7759 2199

E: enquiries@vitaproperties.uk

Disclaimer: These particulars are prepared as a general guide for prospective purchasers or tenants and do not constitute, nor constitute part of, an offer or contract. All statements, descriptions, and measurements contained herein are given in good faith and are believed to be correct at the time of printing, but any intending purchaser or tenant should not rely on them as statements or representations of fact and must satisfy themselves by inspection or otherwise as to their correctness. Floor plans and photographs are for illustrative purposes only and may not be to scale. The position and size of doors, windows, appliances, and other features are approximate. Anti-Money Laundering (AML): In line with the Money Laundering, Terrorist Financing and Transfer of Funds Regulations 2017, we are required to carry out customer due diligence checks. Buyers/tenants will be asked to provide proof of identity, address, and source of funds before a sale or rental can be agreed. Data Protection (GDPR): Personal information supplied to Vita Properties will be processed in accordance with the General Data Protection Regulation (GDPR). Your details may be retained for legitimate business purposes relating to property services. Full details of our Privacy Policy are available on request.

All rights reserved.