



Belsize Square

BELSIZE PARK, LONDON, NW3

£1,920



A truly spectacular four bedroom apartment set upon this prestigious and sought after location in the heart of Belsize Park.

Refurbished to an extremely high standard this stunning apartment boasts an incredible reception room with solid wood floors and fireplace and a fully integrated high spec kitchen with island and space for family dining.

Further benefits include, large master bedroom with private en suite, family bathroom, two guest WC's and an incredible large private rear garden.

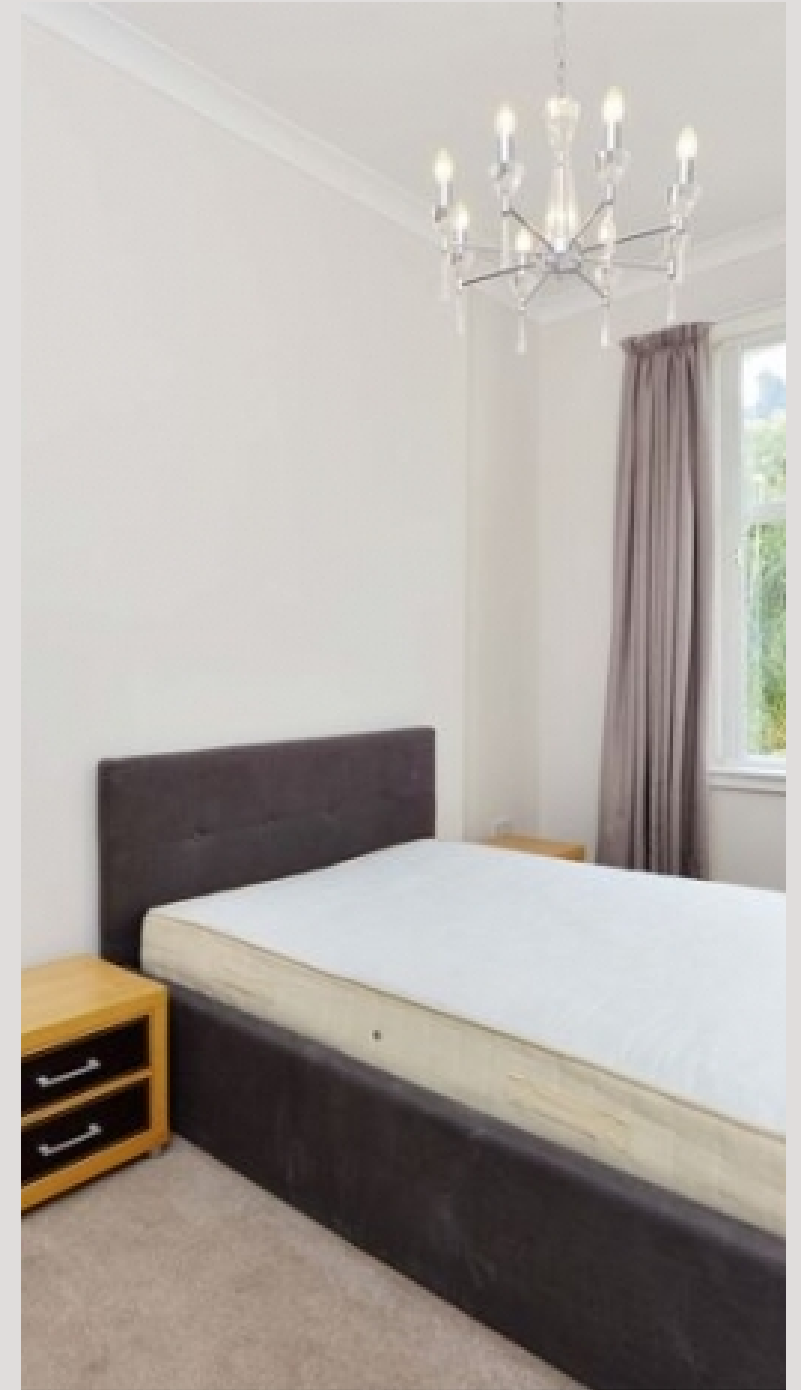
Location is superb with Belsize village moments away, as well as many transport links nearby including Swiss Cottage (Jubilee Line) and Belsize park (Northern Line).



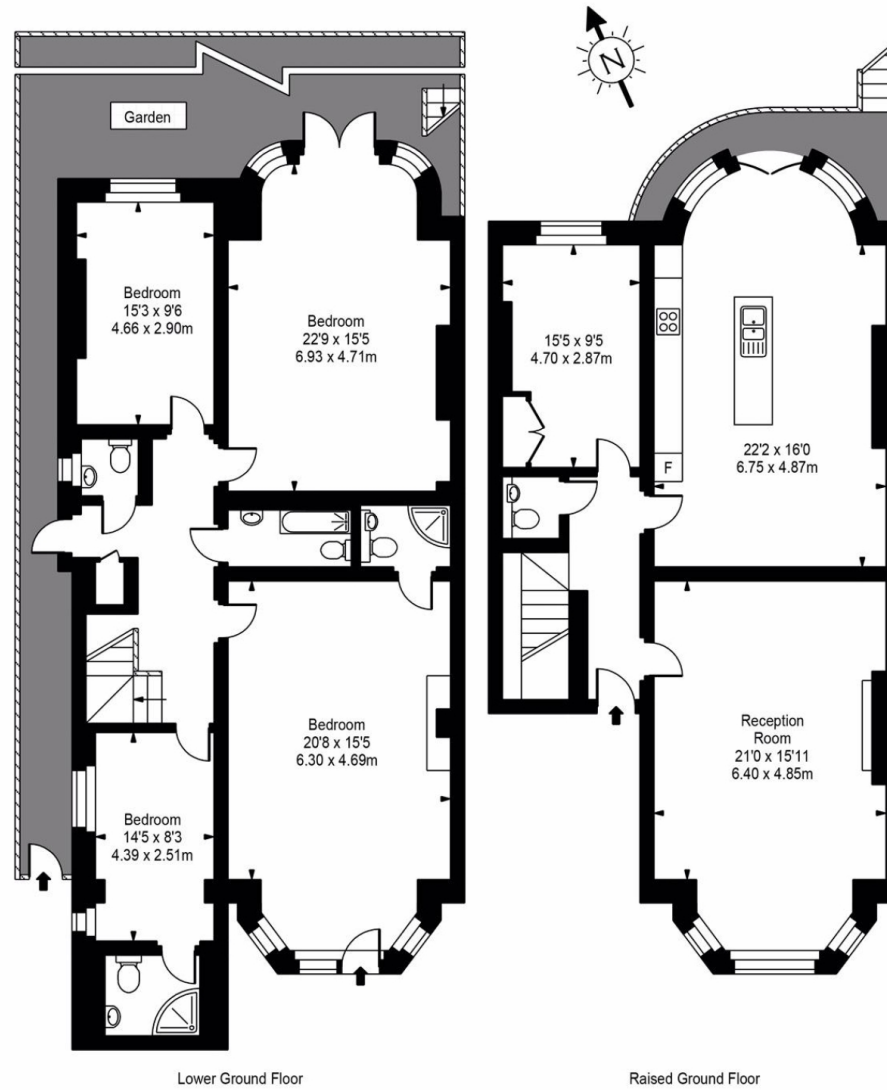








Belsize Square



Lower Ground Floor

Raised Ground Floor



Approx Gross Internal Area 2474 Sq Ft - 229.83 Sq M

For Illustration Purposes Only - Not To Scale
Floor plan by www.bestangle.co.uk

Particulars

Property

Belsize Square, Belsize Park, London, NW3
£1,920

Rooms



2



3



4

Features

- Separate WC
- Large reception room and separate dining room
- Eat-in kitchen
- Managed

Information

Council Tax



Oliver Kent

oliver.kent@vitaproperties.uk
+4477 7274 0351



Scan for our website





T: +4420 7759 2199
E: enquiries@vitaproperties.uk

Disclaimer: These particulars are prepared as a general guide for prospective purchasers or tenants and do not constitute, nor constitute part of, an offer or contract. All statements, descriptions, and measurements contained herein are given in good faith and are believed to be correct at the time of printing, but any intending purchaser or tenant should not rely on them as statements or representations of fact and must satisfy themselves by inspection or otherwise as to their correctness. Floor plans and photographs are for illustrative purposes only and may not be to scale. The position and size of doors, windows, appliances, and other features are approximate. Anti-Money Laundering (AML): In line with the Money Laundering, Terrorist Financing and Transfer of Funds Regulations 2017, we are required to carry out customer due diligence checks. Buyers/tenants will be asked to provide proof of identity, address, and source of funds before a sale or rental can be agreed. Data Protection (GDPR): Personal information supplied to Vita Properties will be processed in accordance with the General Data Protection Regulation (GDPR). Your details may be retained for legitimate business purposes relating to property services. Full details of our Privacy Policy are available on request.

All rights reserved.