



Yale Court

HONEYBOURNE ROAD, WEST HAMPSTEAD, NW6

£475



An immaculate one bedroom apartment with a study set over 706 sq ft on the ground floor of this prestigious mansion building located in the heart of West Hampstead. The apartment comprises a large reception room, fully fitted kitchen, dining room, double bedroom and a bathroom.

The property further benefits from wooden floors throughout, high ceilings, feature fireplaces in the reception and the bedroom and is well located for easy access to shops and cafes and a 5 minutes walk to West Hampstead Thameslink, (Silverlink) Underground Stations (Jubilee Line) and Overground Stations.





An immaculate one bedroom apartment with a study set over 706 sq ft on the ground floor of this prestigious mansion building located in the heart of West Hampstead. The apartment comprises a large reception room, fully fitted kitchen, dining room, double bedroom and a bathroom.

The property further benefits from wooden floors throughout, high ceilings, feature fireplaces in the reception and the bedroom and is well located for easy access to shops and cafes and a 5 minutes walk to West Hampstead Thameslink, (Silverlink) Underground Stations (Jubilee Line) and Overground Stations.





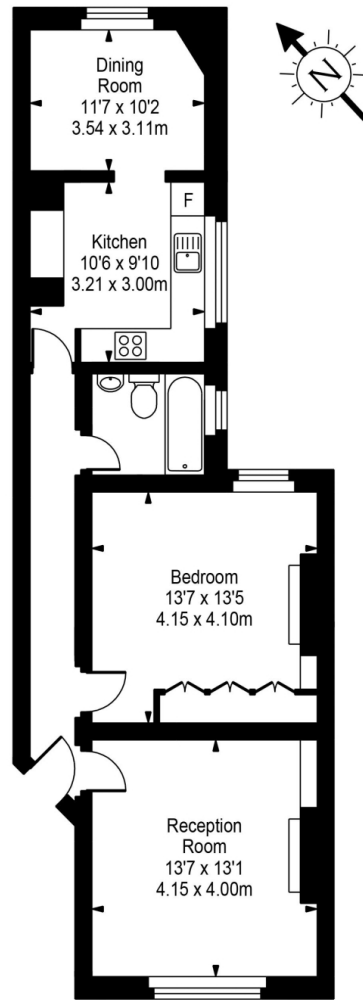




Scan for out video walkthrough



Yale Court



Ground Floor



Approx Gross Internal Area **706 Sq Ft - 65.58 Sq M**

For Illustration Purposes Only - Not To Scale
Floor plan by www.bestangle.co.uk

Particulars

Property

Yale Court, Honeybourne Road, West Hampstead, NW6
£475

Rooms



1



1



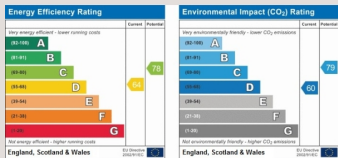
2

Features

- One Bedroom with a study
- Mansion apartment
- Located in the heart of West Hampstead
- Portered Block

Information

Council Tax



Oliver Kent

oliver.kent@vitaproperties.uk
+4477 7274 0351



Scan for our website





T: +4420 7759 2199

E: enquiries@vitaproperties.uk

Disclaimer: These particulars are prepared as a general guide for prospective purchasers or tenants and do not constitute, nor constitute part of, an offer or contract. All statements, descriptions, and measurements contained herein are given in good faith and are believed to be correct at the time of printing, but any intending purchaser or tenant should not rely on them as statements or representations of fact and must satisfy themselves by inspection or otherwise as to their correctness. Floor plans and photographs are for illustrative purposes only and may not be to scale. The position and size of doors, windows, appliances, and other features are approximate. Anti-Money Laundering (AML): In line with the Money Laundering, Terrorist Financing and Transfer of Funds Regulations 2017, we are required to carry out customer due diligence checks. Buyers/tenants will be asked to provide proof of identity, address, and source of funds before a sale or rental can be agreed. Data Protection (GDPR): Personal information supplied to Vita Properties will be processed in accordance with the General Data Protection Regulation (GDPR). Your details may be retained for legitimate business purposes relating to property services. Full details of our Privacy Policy are available on request.

All rights reserved.