



## Latitude House

OVAL ROAD, REGENTS PARK, LONDON, NW1

£3,800



Available May 2024 - A beautiful interior designed 1 bedroom, 1 bathroom apartment, with floor to ceiling windows flooding the second floor apartment with light. Latitude House is an award winning architecturally designed building, very safe and secure, within walking distance of the beautiful green spaces of Regent's Park and Primrose Hill Village.

Latitude House offers a highly desirable location, just moments away from the vibrant shops and amenities of Camden High Street. The property is also conveniently situated near the vast green spaces of Regent's Park and the picturesque Primrose Hill, providing opportunities for outdoor activities and relaxation. Commuting is a breeze with the closest transport links being Camden Town Station (Northern line) and Mornington Crescent Station (Northern line).

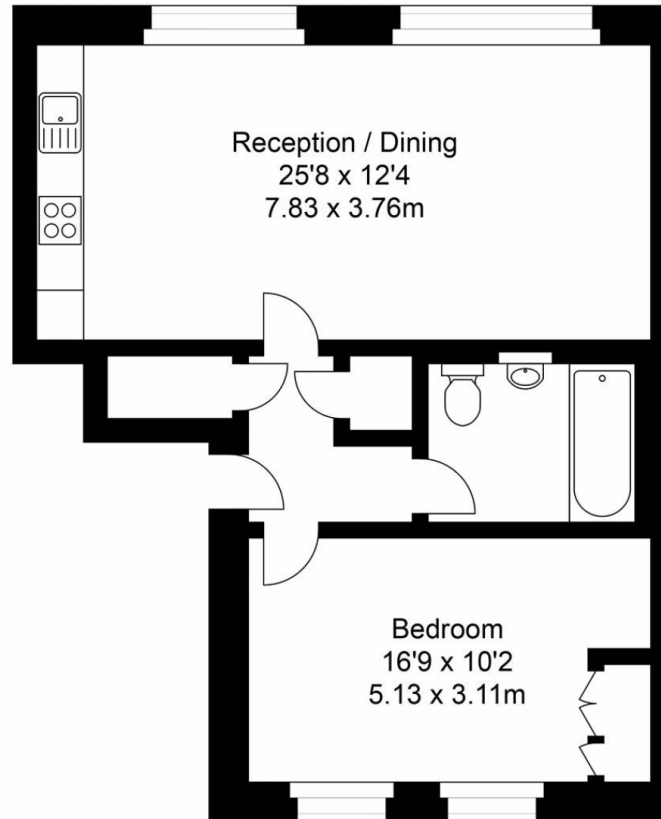
Enjoy easy access to the rest of London, allowing you to explore everything the city has to offer. Don't miss the chance to rent this exceptional penthouse apartment, which offers modern living, a desirable location, and a stylish ambiance. Contact us today to arrange a viewing and secure your dream home.







# Latitude House



Second Floor



Approx Gross Internal Area **627. Sq Ft - 58.32 Sq M**

FOR ILLUSTRATIVE PURPOSES ONLY. NOT TO SCALE.

Whilst every attempt has been made to ensure the accuracy of the floorplan shown, all measurements, positioning, fixtures, fittings and any other data shown are an approximate interpretation for illustrative purposes only and are not to scale. No responsibility is taken for any error, omission, miss-statement or use of data shown.

Floor plan by [www.bestangle.co.uk](http://www.bestangle.co.uk)

# Particulars

## Property

Latitude House, Oval Road, Regents Park, London, NW1  
£3,800

## Rooms

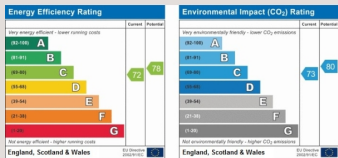


## Features

- A spacious one bedroom apartment
- Seconds to Primrose Hill
- Contemporary Furnishings
- Moments to Tube

## Information

Council Tax



Zoe Browne

[zoe.browne@vitaproperties.uk](mailto:zoe.browne@vitaproperties.uk)

+44 7880 277371



Scan for our website





T: +4420 7759 2199

E: [enquiries@vitaproperties.uk](mailto:enquiries@vitaproperties.uk)

Disclaimer: These particulars are prepared as a general guide for prospective purchasers or tenants and do not constitute, nor constitute part of, an offer or contract. All statements, descriptions, and measurements contained herein are given in good faith and are believed to be correct at the time of printing, but any intending purchaser or tenant should not rely on them as statements or representations of fact and must satisfy themselves by inspection or otherwise as to their correctness. Floor plans and photographs are for illustrative purposes only and may not be to scale. The position and size of doors, windows, appliances, and other features are approximate. Anti-Money Laundering (AML): In line with the Money Laundering, Terrorist Financing and Transfer of Funds Regulations 2017, we are required to carry out customer due diligence checks. Buyers/tenants will be asked to provide proof of identity, address, and source of funds before a sale or rental can be agreed. Data Protection (GDPR): Personal information supplied to Vita Properties will be processed in accordance with the General Data Protection Regulation (GDPR). Your details may be retained for legitimate business purposes relating to property services. Full details of our Privacy Policy are available on request.

All rights reserved.