



Eden Close

KENSINGTON, LONDON, W8

£600



Available 24th August and offered furnished - A Contemporary and spacious two double bedroom, two bathroom (1 en-suite) apartment refurbished to a high standard and with modern furniture.

The apartment comprises a semi open plan kitchen to dining & reception room, modern fully tiled bathrooms, wooden floors, plasma TV's and secure entrance from Adam & Eve Mews.

Eden Close couldn't be any closer to the high street and is within a stones throw of High Street Kensington tube.



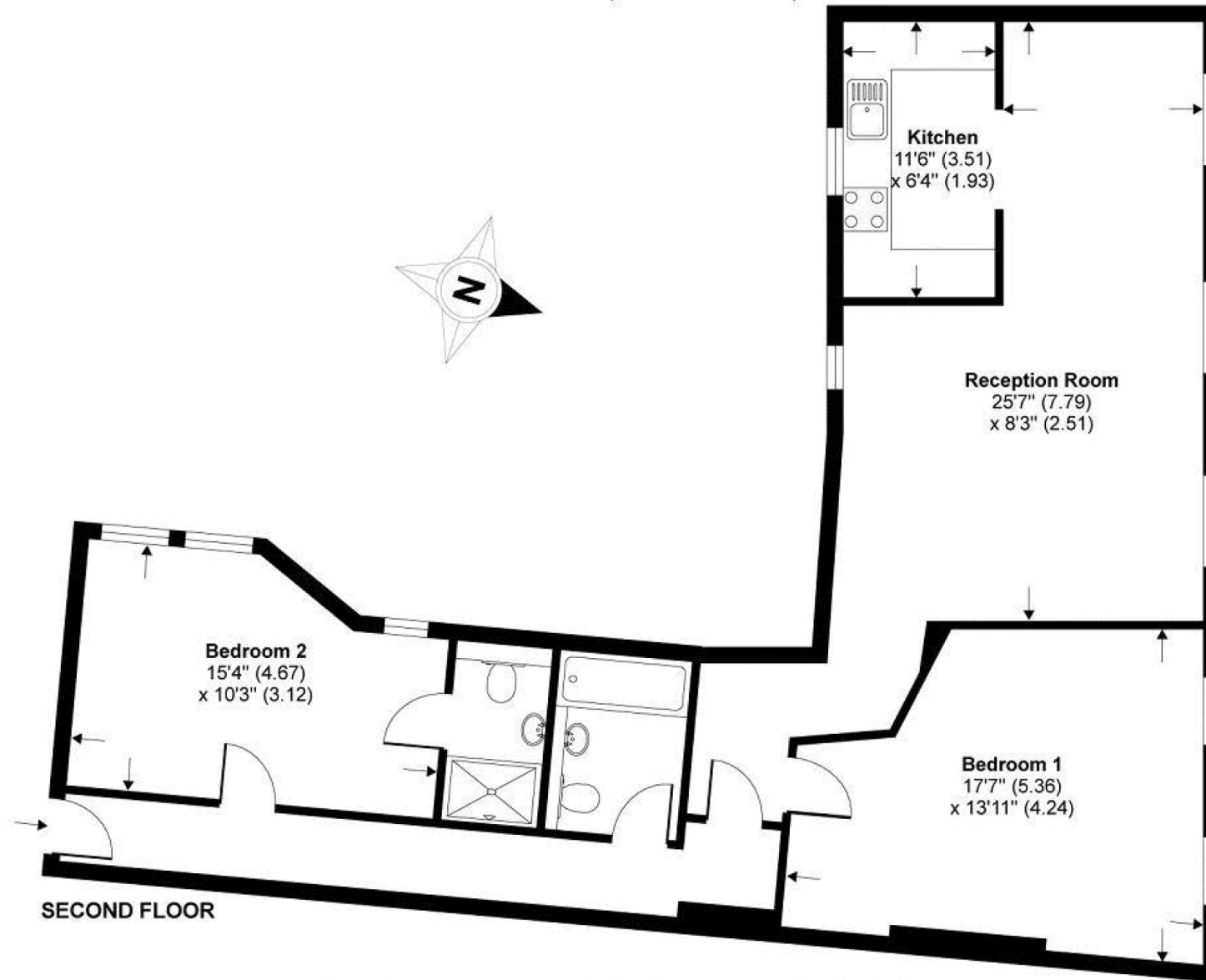








Eden Close, London, W8



TOTAL GROSS INTERNAL FLOOR AREA 956 SQ FT 88.8 SQ METRES

Whilst every attempt has been made to ensure the accuracy of the floor plan contained here, measurements of doors, windows and rooms are approximate and no responsibility is taken for any error, omission or misstatement. These plans are for representation purposes only as defined by RICS Code of Measuring Practice and should be used as such by any prospective purchaser. Specifically no guarantee is given on the total square footage of the property if quoted on this plan. Any figure given is for initial guidance only and should not be relied on as a basis of valuation.

Particulars

Property

Eden Close, Kensington, London, W8
£600

Rooms



Features

- No parking permit will be granted from council
- Furnished and finished to a high standard
- Seconds to tube
- Wood flooring

Information

Council Tax



Oliver Kent

oliver.kent@vitaproperties.uk
+4477 7274 0351



Scan for our website





T: +4420 7759 2199

E: enquiries@vitaproperties.uk

Disclaimer: These particulars are prepared as a general guide for prospective purchasers or tenants and do not constitute, nor constitute part of, an offer or contract. All statements, descriptions, and measurements contained herein are given in good faith and are believed to be correct at the time of printing, but any intending purchaser or tenant should not rely on them as statements or representations of fact and must satisfy themselves by inspection or otherwise as to their correctness. Floor plans and photographs are for illustrative purposes only and may not be to scale. The position and size of doors, windows, appliances, and other features are approximate. Anti-Money Laundering (AML): In line with the Money Laundering, Terrorist Financing and Transfer of Funds Regulations 2017, we are required to carry out customer due diligence checks. Buyers/tenants will be asked to provide proof of identity, address, and source of funds before a sale or rental can be agreed. Data Protection (GDPR): Personal information supplied to Vita Properties will be processed in accordance with the General Data Protection Regulation (GDPR). Your details may be retained for legitimate business purposes relating to property services. Full details of our Privacy Policy are available on request.

All rights reserved.