



## Pulse Apartments

52 LYMINGTON ROAD, HAMPSTEAD, NW6 1HQ

£925,000

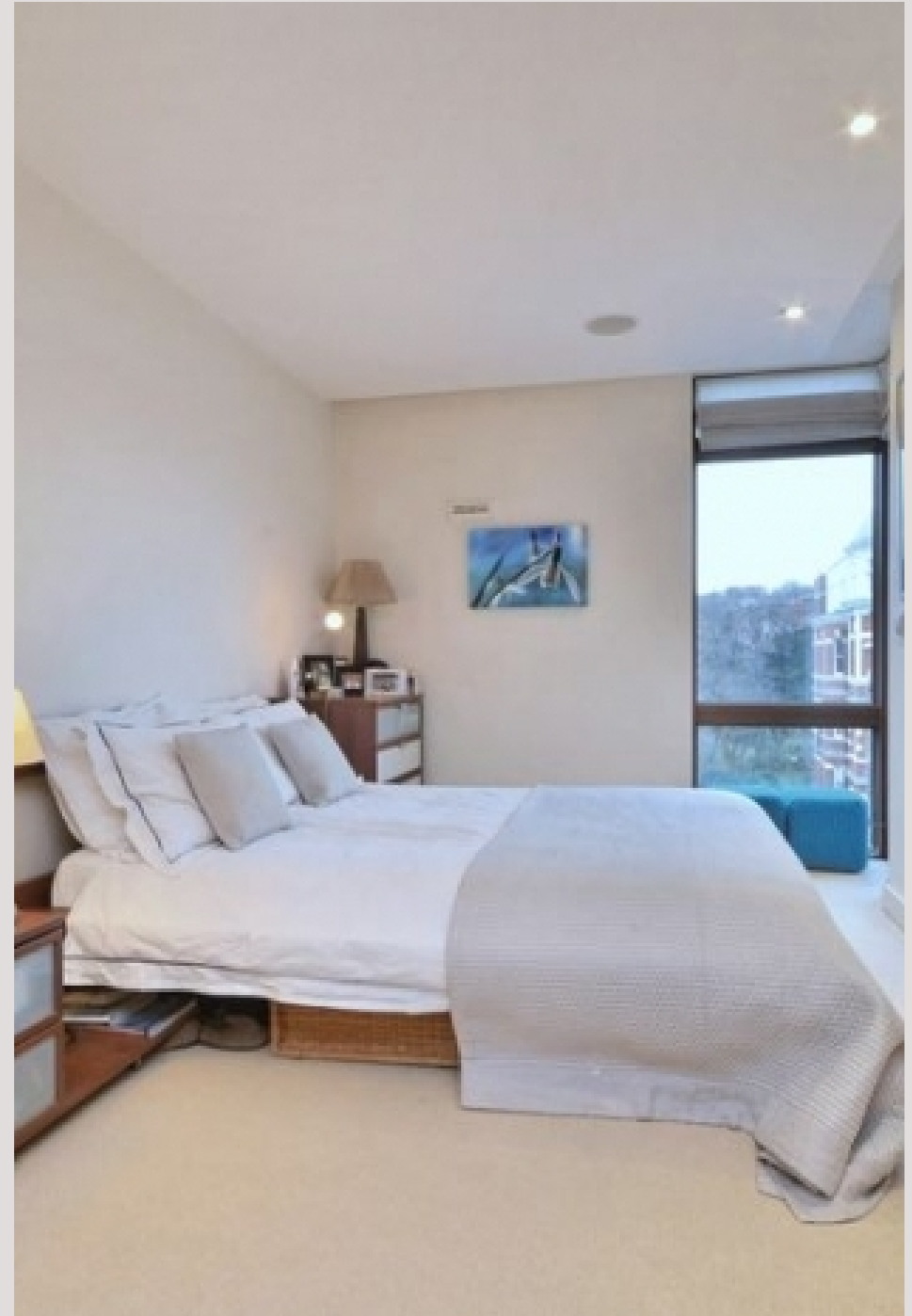


A two bedroom luxury apartment boasting approx. 1000 sq ft in a modern development on the corner of Lymington Road and Finchley Road.

This flat boasts two lovely size bedrooms, two bathrooms (1 ensuite) and a modern open plan kitchen.

The flat benefits from a spacious lounge surrounded by large windows with a private balcony big enough to entertain, further 2 bedrooms, porter and an allocated parking space.

Further benefits include under floor heating and a concierge service as well as being a few minute's walk from transport (Jubilee and Metropolitan Lines) and the O2 Centre





A two bedroom luxury apartment boasting approx.

1000 sq ft in a modern development on the corner of Lymington Road and Finchley Road.

This flat boasts two lovely size bedrooms, two bathrooms (1 ensuite) and a modern open plan kitchen.

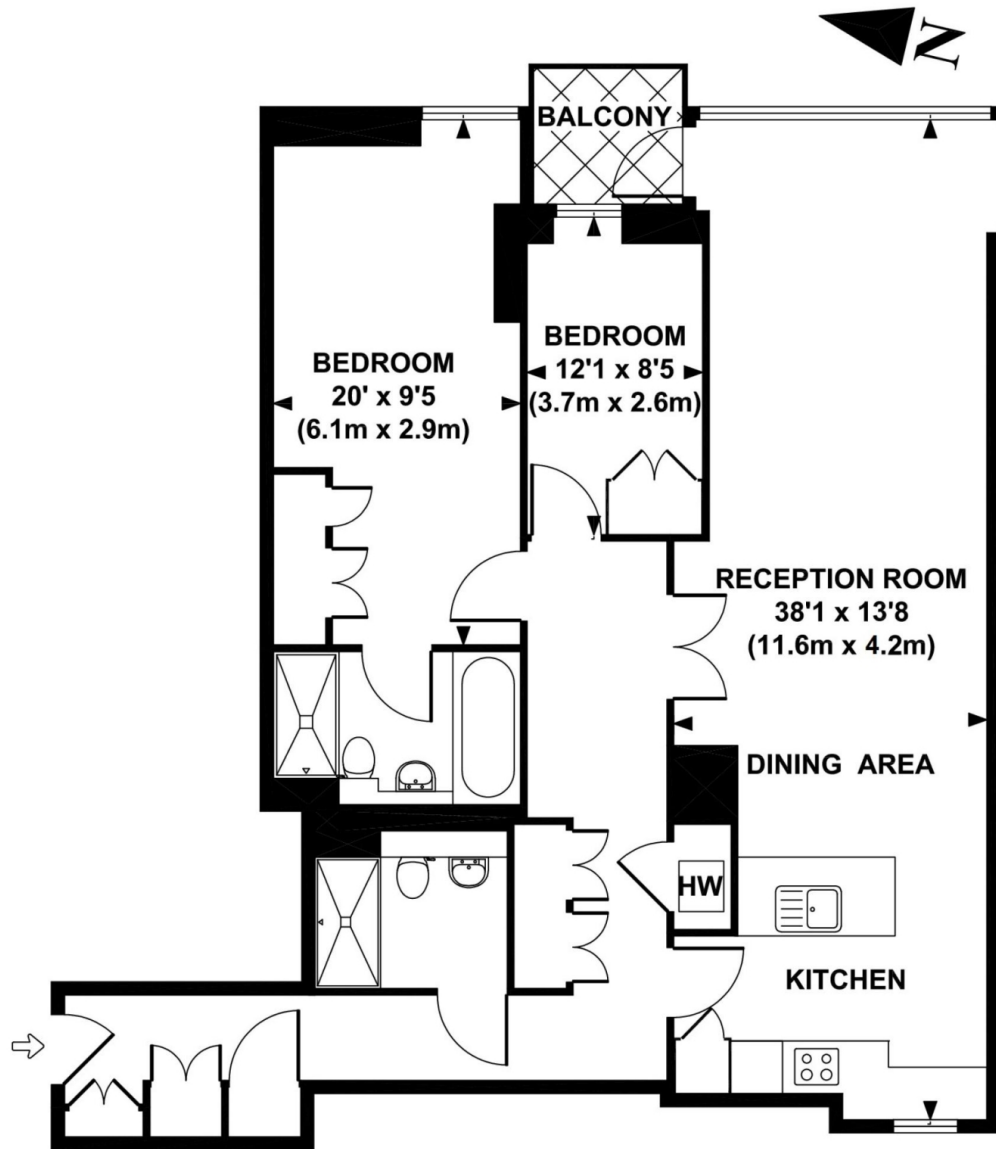
The flat benefits from a spacious lounge surrounded by large windows with a private balcony big enough to entertain, further 2 bedrooms, porter and an allocated parking space. Further benefits include under floor heating and a concierge service as well as being a few minute's walk from transport (Jubilee and Metropolitan Lines) and the O2 Centre











**FIFTH FLOOR**

**APPROX. GROSS INTERNAL FLOOR AREA 1,050 SQ FT / 97.6 SQ**

This floorplan is for illustration purposes and may not truly reflect design or dimensions and should not be used for valuation or condition purposes .

# Particulars

## Property

Pulse Apartments, 52 Lymington Road, Hampstead, NW6 1HQ  
£925,000

## Rooms



1



2



2

## Features

- Parking & Porter
- Balcony
- Moments to tube
- Underfloor heating

## Information

Council Tax



Oliver Kent

[oliver.kent@vitaproperties.uk](mailto:oliver.kent@vitaproperties.uk)  
+4477 7274 0351



Scan for our website





T: +4420 7759 2199

E: [enquiries@vitaproperties.uk](mailto:enquiries@vitaproperties.uk)

Disclaimer: These particulars are prepared as a general guide for prospective purchasers or tenants and do not constitute, nor constitute part of, an offer or contract. All statements, descriptions, and measurements contained herein are given in good faith and are believed to be correct at the time of printing, but any intending purchaser or tenant should not rely on them as statements or representations of fact and must satisfy themselves by inspection or otherwise as to their correctness. Floor plans and photographs are for illustrative purposes only and may not be to scale. The position and size of doors, windows, appliances, and other features are approximate. Anti-Money Laundering (AML): In line with the Money Laundering, Terrorist Financing and Transfer of Funds Regulations 2017, we are required to carry out customer due diligence checks. Buyers/tenants will be asked to provide proof of identity, address, and source of funds before a sale or rental can be agreed. Data Protection (GDPR): Personal information supplied to Vita Properties will be processed in accordance with the General Data Protection Regulation (GDPR). Your details may be retained for legitimate business purposes relating to property services. Full details of our Privacy Policy are available on request.

All rights reserved.