



## Jack Straws Castle

NORTH END WAY, HAMPSTEAD, LONDON, NW3

£1,099



Available immediately - Vita Properties are delighted to offer this superb three bedroom, two bathroom (approx.

2379 sq ft / 220 sq meter) penthouse flat situated in a landmark development opposite Hampstead Heath.

The property has a number of benefits including off street parking, a spacious living area, master bedroom with en suite, a fully modernised kitchen, a large roof terrace and an in house gym and is set within walking distance to the tube and amenities of Hampstead.

The M1 and North Circular are within easy access Offered on a furnished or unfurnished basis.





Available immediately - Vita Properties are delighted to offer this superb three bedroom, two bathroom (approx.

2379 sq ft / 220 sq meter) penthouse flat situated in a landmark development opposite Hampstead Heath.

The property has a number of benefits including off street parking, a spacious living area, master bedroom with en suite, a fully modernised kitchen, a large roof terrace and an in house gym and is set within walking distance to the tube and amenities of Hampstead.

The M1 and North Circular are within easy access Offered on a furnished or unfurnished basis.

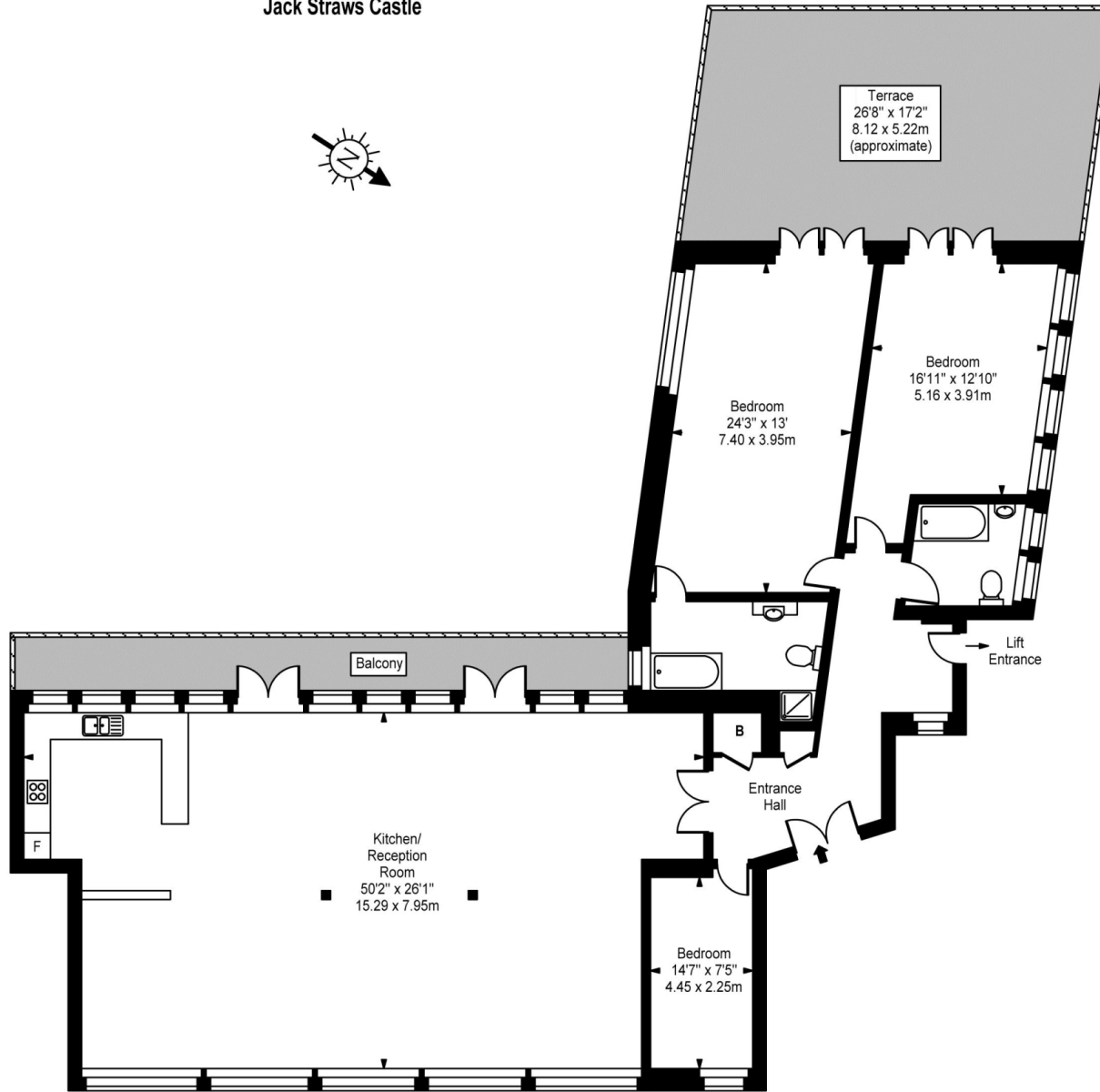








# Jack Straws Castle



Second Floor

Approx Gross Internal Area 2379 Sq Ft - 220.98 Sq M

For Illustration Purposes Only - Not To Scale  
Floor plan by [www.creativeplanettk.com](http://www.creativeplanettk.com)

# Particulars

## Property

Jack Straws Castle, North End Way, Hampstead, London, NW3  
£1,099

## Rooms



1



2



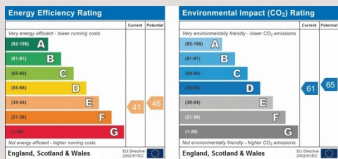
3

## Features

- Modern
- Stunning Location
- Managed
- Roof terrace

## Information

Council Tax



Oliver Kent

oliver.kent@vitaproperties.uk  
+4477 7274 0351



Scan for our website





T: +4420 7759 2199  
E: [enquiries@vitaproperties.uk](mailto:enquiries@vitaproperties.uk)

Disclaimer: These particulars are prepared as a general guide for prospective purchasers or tenants and do not constitute, nor constitute part of, an offer or contract. All statements, descriptions, and measurements contained herein are given in good faith and are believed to be correct at the time of printing, but any intending purchaser or tenant should not rely on them as statements or representations of fact and must satisfy themselves by inspection or otherwise as to their correctness. Floor plans and photographs are for illustrative purposes only and may not be to scale. The position and size of doors, windows, appliances, and other features are approximate. Anti-Money Laundering (AML): In line with the Money Laundering, Terrorist Financing and Transfer of Funds Regulations 2017, we are required to carry out customer due diligence checks. Buyers/tenants will be asked to provide proof of identity, address, and source of funds before a sale or rental can be agreed. Data Protection (GDPR): Personal information supplied to Vita Properties will be processed in accordance with the General Data Protection Regulation (GDPR). Your details may be retained for legitimate business purposes relating to property services. Full details of our Privacy Policy are available on request.

All rights reserved.