



## Whittlebury Mews

DUMPTON PLACE, PRIMROSE HILL, LONDON, NW1

£1,200



**\*\* VIDEO VIEWINGS AVAILABLE\*\*** Available immediately for a long let is this exciting newly built townhouse being part of a development of four newly constructed townhouses, located within a secure and gated development, each house offering allocated parking and private courtyard.

The houses have been architecturally designed and offers spacious and contemporary living.

Whittlebury Mews is located in the heart of Primrose Hill, located off Gloucester Avenue, close to the shops, cafés and restaurants of Regents Park Road and surrounding areas of Primrose Hill, Regents Park and Camden





**\*\* VIDEO VIEWINGS AVAILABLE\*\*** Available immediately for a long let is this exciting newly built townhouse being part of a development of four newly constructed townhouses, located within a secure and gated development, each house offering allocated parking and private courtyard.

The houses have been architecturally designed and offers spacious and contemporary living.

Whittlebury Mews is located in the heart of Primrose Hill, located off Gloucester Avenue, close to the shops, cafés and restaurants of Regents Park Road and surrounding areas of Primrose Hill, Regents Park and Camden

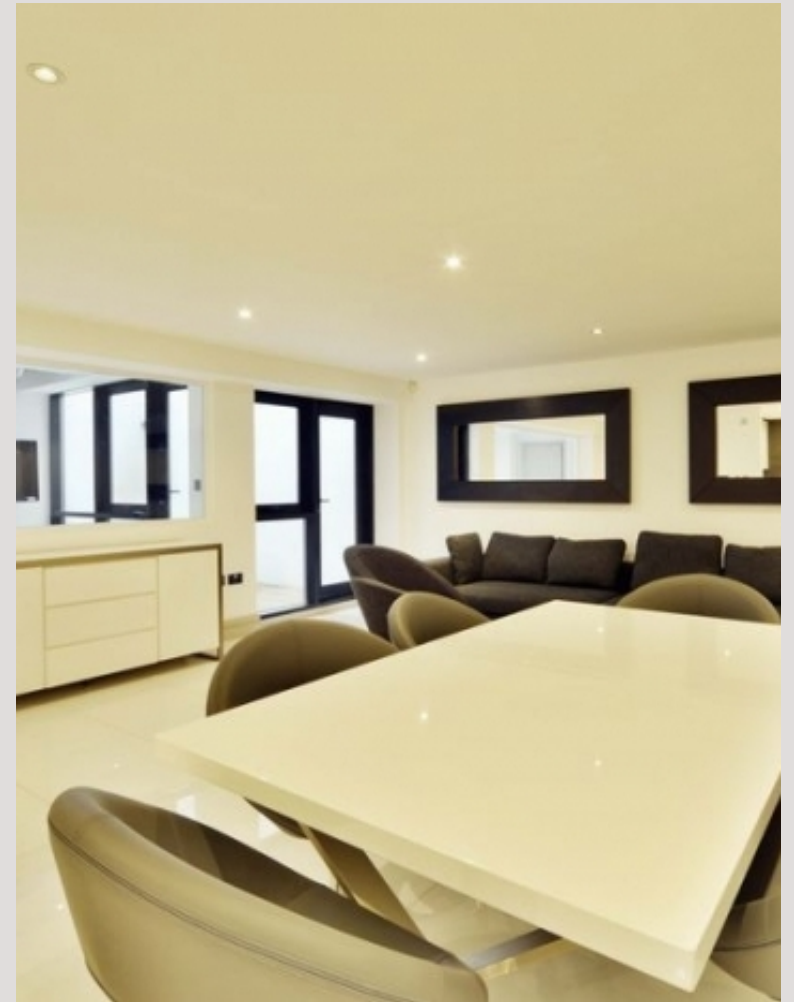








Scan for out video walkthrough

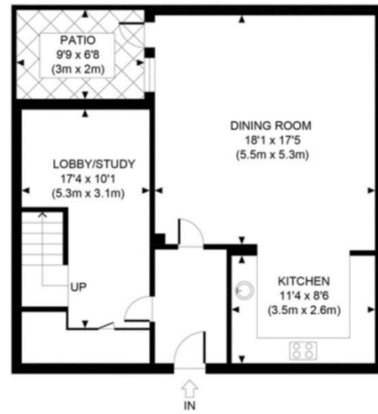




SECOND FLOOR  
GROSS INTERNAL  
FLOOR AREA 293 SQ FT



FIRST FLOOR  
GROSS INTERNAL  
FLOOR AREA 655 SQ FT



BASEMENT  
GROSS INTERNAL  
FLOOR AREA 689 SQ FT



GROUND FLOOR  
GROSS INTERNAL  
FLOOR AREA 639 SQ FT

APPROX. GROSS INTERNAL FLOOR AREA 2276 SQ FT / 211 SQM  
Ref: Copyright **photoPlan**

Disclaimer: Floor plan measurements are approximate and are for illustrative purposes only. While we do not doubt the floor plan accuracy and completeness, you or your advisors should conduct a careful, independent investigation of the property in respect of monetary valuation

# Particulars

## Property

Whittlebury Mews, Dumpton Place, Primrose Hill, London,  
NW20

## Rooms



## Features

- Available immediately
- Located moments from Primrose Hill park and high street
- Modern and trendy
- Private patio and terrace

## Information

Council Tax

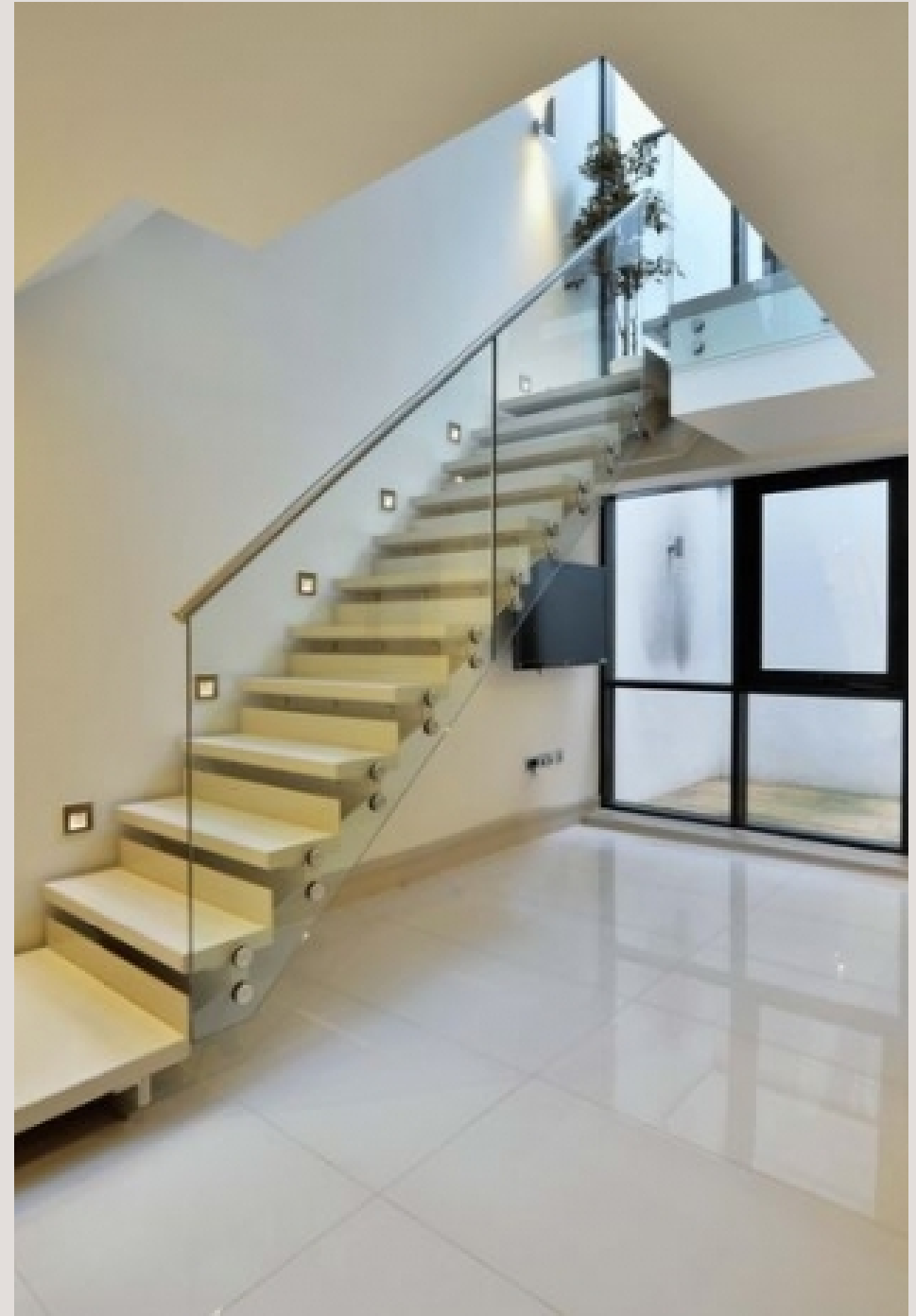


Oliver Kent

oliver.kent@vitaproperties.uk  
+4477 7274 0351



Scan for our website





T: +4420 7759 2199

E: [enquiries@vitaproperties.uk](mailto:enquiries@vitaproperties.uk)

Disclaimer: These particulars are prepared as a general guide for prospective purchasers or tenants and do not constitute, nor constitute part of, an offer or contract. All statements, descriptions, and measurements contained herein are given in good faith and are believed to be correct at the time of printing, but any intending purchaser or tenant should not rely on them as statements or representations of fact and must satisfy themselves by inspection or otherwise as to their correctness. Floor plans and photographs are for illustrative purposes only and may not be to scale. The position and size of doors, windows, appliances, and other features are approximate. Anti-Money Laundering (AML): In line with the Money Laundering, Terrorist Financing and Transfer of Funds Regulations 2017, we are required to carry out customer due diligence checks. Buyers/tenants will be asked to provide proof of identity, address, and source of funds before a sale or rental can be agreed. Data Protection (GDPR): Personal information supplied to Vita Properties will be processed in accordance with the General Data Protection Regulation (GDPR). Your details may be retained for legitimate business purposes relating to property services. Full details of our Privacy Policy are available on request.

All rights reserved.