



## Harford Walk

HAMPSTEAD GARDEN SUBURB, LONDON, N2

£895



Available 18th April is this fantastic 5 bedroomed detached family home arranged over 3 floors, set at the top of a very quiet cul de sac within 4 minutes walk of East Finchley tube station (northern line) and extensive shopping amenities. Featuring wood flooring throughout the house and comprising entrance hall, large through lounge/dining room, recently fitted white kitchen leading to a family/breakfast room, guest cloakroom, first floor comprises master bedroom with en suite bathroom, 2 further double bedrooms, family bathroom, single bedroom, 2nd floor comprises double bedroom and bathroom with a sizeable landing ideal for storage. There is a driveway to the front for 2 cars and to the rear there is a patio and large rear garden. Unfurnished





Available 18th April is this fantastic 5 bedroomed detached family home arranged over 3 floors, set at the top of a very quiet cul de sac within 4 minutes walk of East Finchley tube station (northern line) and extensive shopping amenities.

Featuring wood flooring throughout the house and comprising entrance hall, large through lounge/dining room, recently fitted white kitchen leading to a family/breakfast room, guest cloakroom, first floor comprises master bedroom with en suite bathroom, 2 further double bedrooms, family bathroom, single bedroom, 2nd floor comprises double bedroom and bathroom with a sizeable landing ideal for storage.

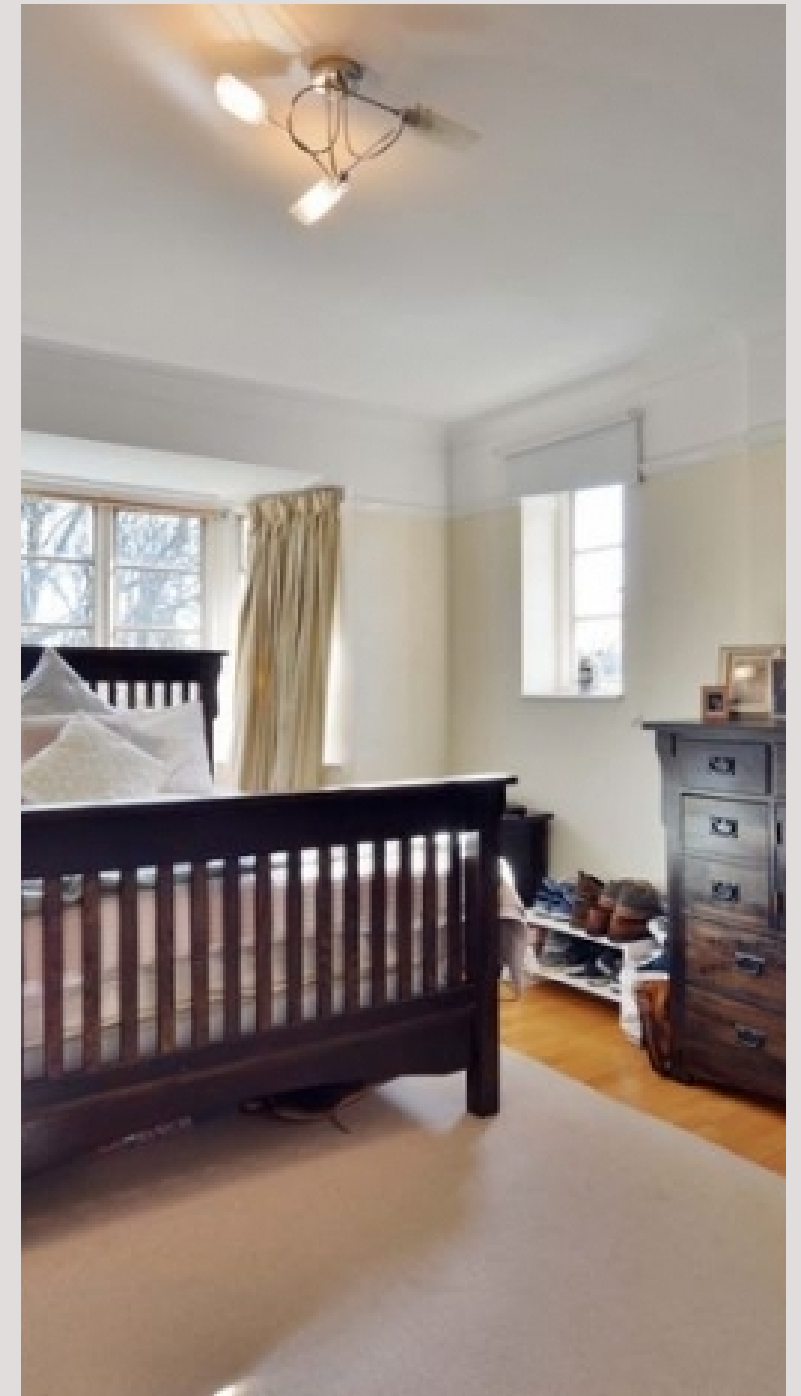
There is a driveway to the front for 2 cars and to the rear there is a patio and large rear garden.

Unfurnished

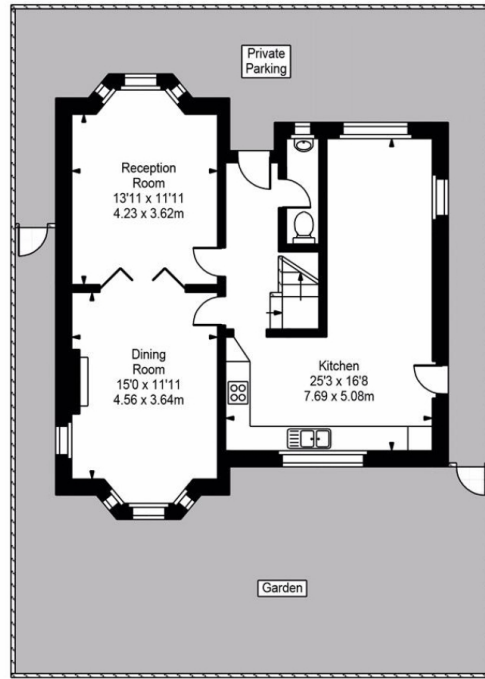




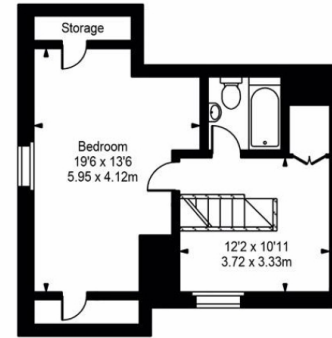




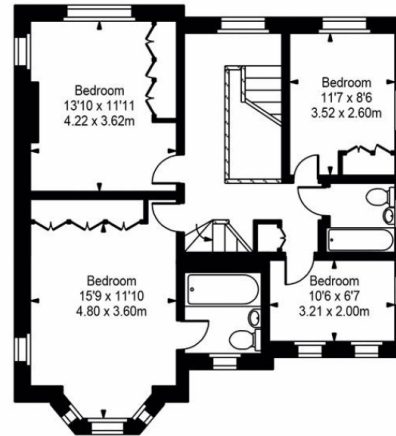
Harford Walk



Ground Floor



Second Floor



First Floor



Approx Gross Internal Area 2082 Sq Ft - 193.38 Sq M

For Illustration Purposes Only - Not To Scale  
Floor plan by [www.creativeplanettk.com](http://www.creativeplanettk.com)

# Particulars

## Property

Harford Walk, Hampstead Garden Suburb, London, N2  
£895

## Rooms

-  2
-  3
-  5+

## Features

- Double aspect living room
- 5 Bedrooms
- Off street parking for 2 cars
- Private garden

## Information

Council Tax



Oliver Kent

oliver.kent@vitaproperties.uk  
+4477 7274 0351



Scan for our website





T: +4420 7759 2199

E: [enquiries@vitaproperties.uk](mailto:enquiries@vitaproperties.uk)

Disclaimer: These particulars are prepared as a general guide for prospective purchasers or tenants and do not constitute, nor constitute part of, an offer or contract. All statements, descriptions, and measurements contained herein are given in good faith and are believed to be correct at the time of printing, but any intending purchaser or tenant should not rely on them as statements or representations of fact and must satisfy themselves by inspection or otherwise as to their correctness. Floor plans and photographs are for illustrative purposes only and may not be to scale. The position and size of doors, windows, appliances, and other features are approximate. Anti-Money Laundering (AML): In line with the Money Laundering, Terrorist Financing and Transfer of Funds Regulations 2017, we are required to carry out customer due diligence checks. Buyers/tenants will be asked to provide proof of identity, address, and source of funds before a sale or rental can be agreed. Data Protection (GDPR): Personal information supplied to Vita Properties will be processed in accordance with the General Data Protection Regulation (GDPR). Your details may be retained for legitimate business purposes relating to property services. Full details of our Privacy Policy are available on request.

All rights reserved.