



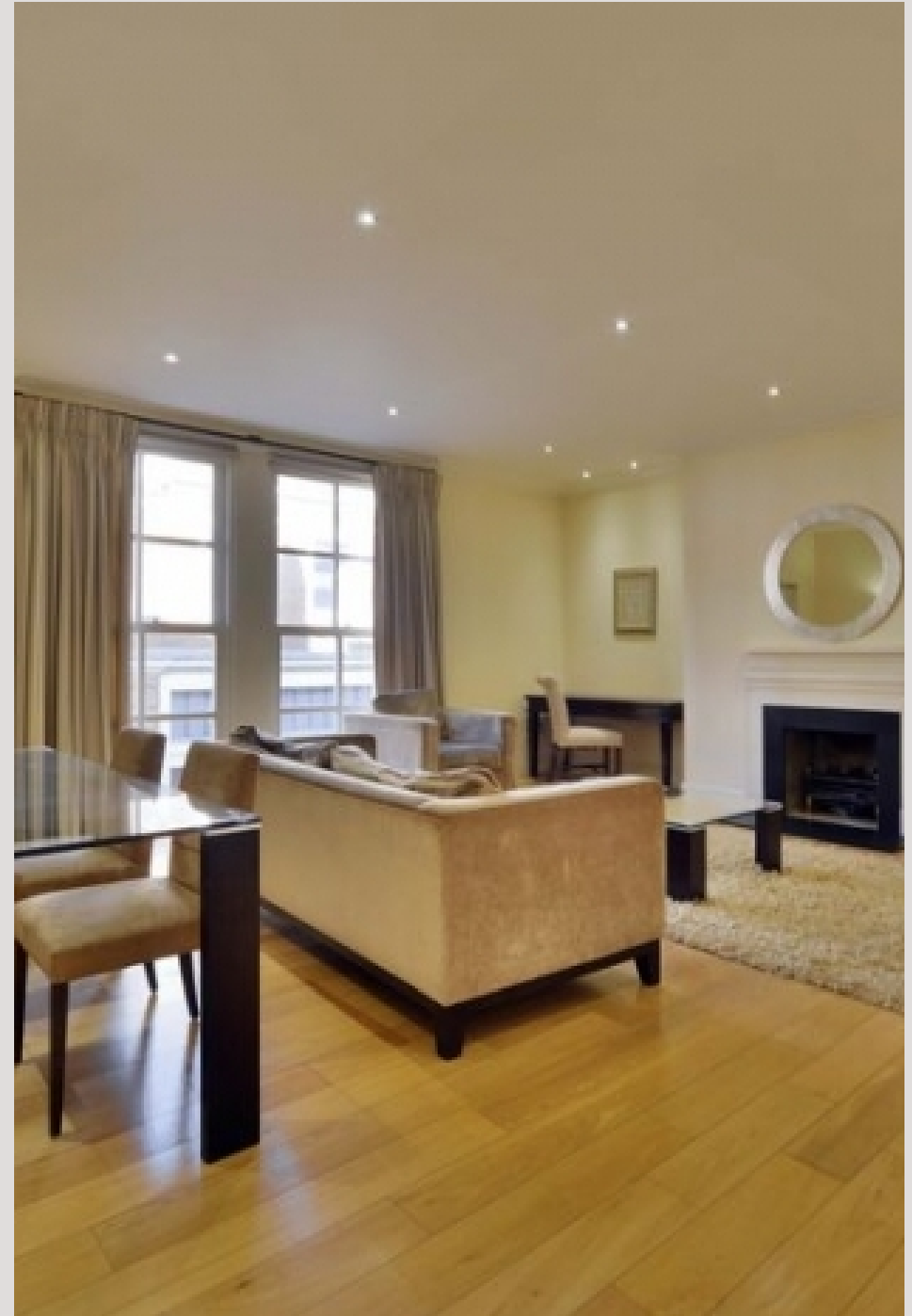
Woods Mews
MAYFAIR, LONDON, W1

£1,500



Available late March- A fully refurbished property including brand new kitchen and bathrooms set across the ground and lower ground floor of this stunning building. This 2 bed, 2 bath maisonette apartment of approximately 1,367 square feet is centrally located in a quiet mews within walking distance of Hyde Park and Grosvenor Square. The apartment has been finished to an extremely high quality and boasts solid wood flooring, feature fireplace, high quality appliances and bespoke furniture, patio and terrace. EPC Rating D. Nearest Tube : Marble Arch / Bond Street.

Mayfair is London's most fashionable destination. With London's finest buildings, largest concentration of luxury hotels, best restaurants, bars, shopping, open spaces and hidden treasures all nestled together in a beautiful village setting



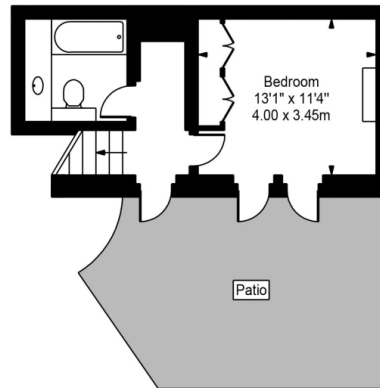
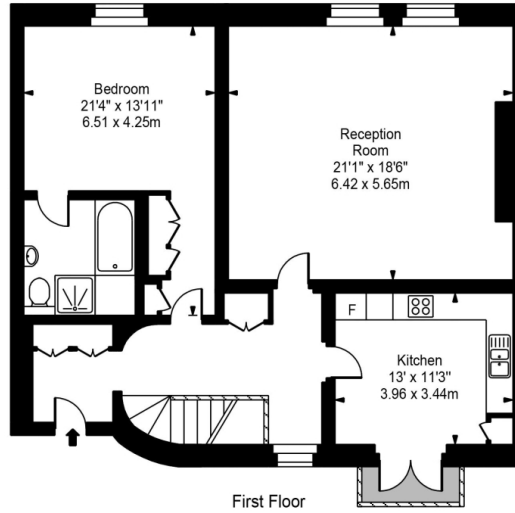








Wood Mews



Ground Floor



Approx Gross Internal Area **1388 Sq Ft - 128.95 Sq M**

For Illustration Purposes Only - Not To Scale
Floor plan by www.creativeplanettk.com

Particulars

Property

Woods Mews, Mayfair, London, W1
£1,500

Rooms



1



2



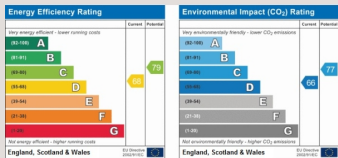
2

Information

Council Tax

Features

- Two Bed, Two Bath
- A spacious private terrace
- Fully refurbished including new kitchen and bathrooms
- Woods Mews is close to the open spaces of Hyde Park and ideal for access to Marble Arch Underground Station as well as the bus links from Park Lane.



Oliver Kent

oliver.kent@vitaproperties.uk
+4477 7274 0351



Scan for our website





T: +4420 7759 2199
E: enquiries@vitaproperties.uk

Disclaimer: These particulars are prepared as a general guide for prospective purchasers or tenants and do not constitute, nor constitute part of, an offer or contract. All statements, descriptions, and measurements contained herein are given in good faith and are believed to be correct at the time of printing, but any intending purchaser or tenant should not rely on them as statements or representations of fact and must satisfy themselves by inspection or otherwise as to their correctness. Floor plans and photographs are for illustrative purposes only and may not be to scale. The position and size of doors, windows, appliances, and other features are approximate. Anti-Money Laundering (AML): In line with the Money Laundering, Terrorist Financing and Transfer of Funds Regulations 2017, we are required to carry out customer due diligence checks. Buyers/tenants will be asked to provide proof of identity, address, and source of funds before a sale or rental can be agreed. Data Protection (GDPR): Personal information supplied to Vita Properties will be processed in accordance with the General Data Protection Regulation (GDPR). Your details may be retained for legitimate business purposes relating to property services. Full details of our Privacy Policy are available on request.

All rights reserved.