



Hamilton Terrace
ST JOHNS WOOD, LONDON, NW8

£725



AVAILABLE NOW - Situated on a premier road in St John's Wood's is this beautifully furnished apartment on the first floor of a period conversion comprises reception room, fully fitted and equipped kitchen, three bedrooms and two bathrooms (one en suite).

The property further benefits from being located close to both Maida Vale and St Johns Wood tube stations.

Offered unfurnished or furnished





AVAILABLE NOW - Situated on a premier road in St John's Wood's is this beautifully furnished apartment on the first floor of a period conversion comprises reception room, fully fitted and equipped kitchen, three bedrooms and two bathrooms (one en suite).

The property further benefits from being located close to both Maida Vale and St Johns Wood tube stations.

Offered unfurnished or furnished

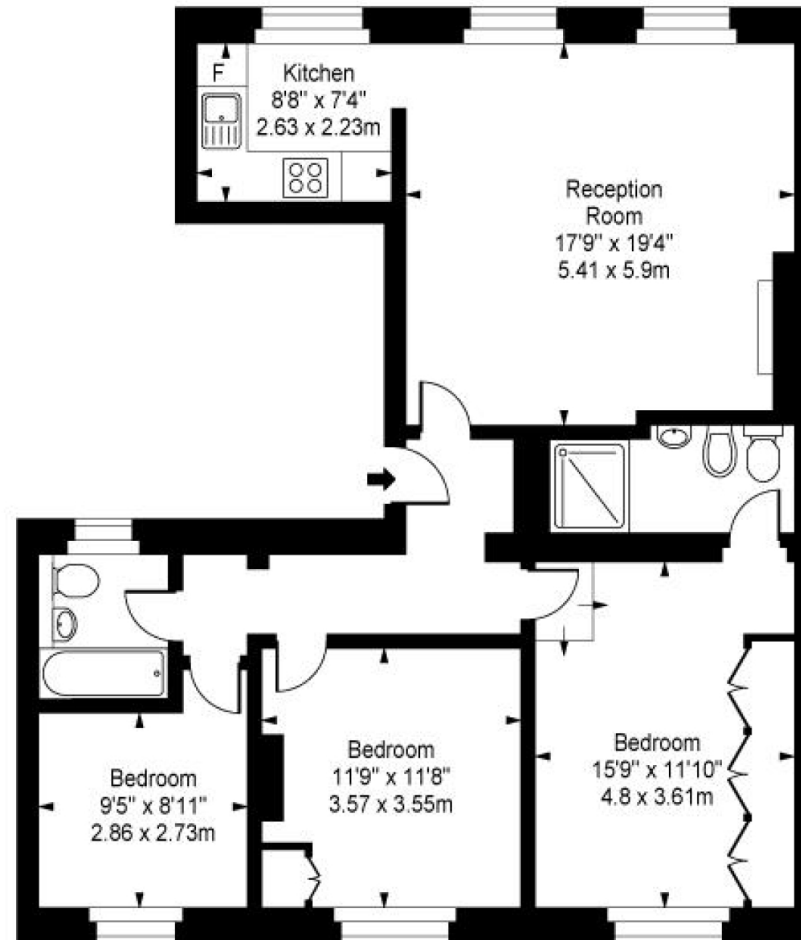
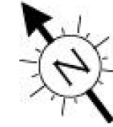








Hamilton Terrace



First Floor

Approx Gross Internal Area **1087 Sq Ft - 100.95 Sq M**

For Illustration Purposes Only - Not To Scale
Floor plan by www.creativeplanetlk.com

Particulars

Property

Hamilton Terrace, St Johns Wood, London, NW8
£725

Rooms



1



2



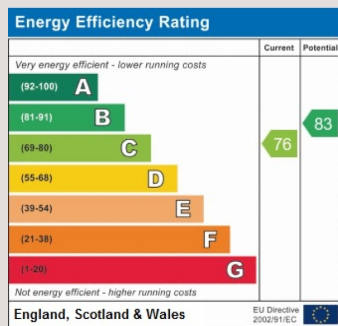
3

Features

- Reception/Dining Room
- First Floor
- Available NOW
- Mycounciltax.org.uk - G - £1141 per annum

Information

Council Tax



Oliver Kent

oliver.kent@vitaproperties.uk
+4477 7274 0351



Scan for our website





T: +4420 7759 2199

E: enquiries@vitaproperties.uk

Disclaimer: These particulars are prepared as a general guide for prospective purchasers or tenants and do not constitute, nor constitute part of, an offer or contract. All statements, descriptions, and measurements contained herein are given in good faith and are believed to be correct at the time of printing, but any intending purchaser or tenant should not rely on them as statements or representations of fact and must satisfy themselves by inspection or otherwise as to their correctness. Floor plans and photographs are for illustrative purposes only and may not be to scale. The position and size of doors, windows, appliances, and other features are approximate. Anti-Money Laundering (AML): In line with the Money Laundering, Terrorist Financing and Transfer of Funds Regulations 2017, we are required to carry out customer due diligence checks. Buyers/tenants will be asked to provide proof of identity, address, and source of funds before a sale or rental can be agreed. Data Protection (GDPR): Personal information supplied to Vita Properties will be processed in accordance with the General Data Protection Regulation (GDPR). Your details may be retained for legitimate business purposes relating to property services. Full details of our Privacy Policy are available on request.

All rights reserved.