



Chesterford Gardens

HAMPSTEAD, LONDON, NW3

£1,000



Available on the 23 October 2019 is this very large (approx 1591 sq ft) family flat in the heart of Hampstead and close to the schools and the High street and Heath itself.

The property offers a private garden with lawn and decked area and access to the adjoining communal garden from the large and bright living room.

The large eat in fully integrated kitchen has conservatory style glass panels flooding the area with light.

The hallway has a separate wc, the large master bedroom has an en suite bathroom and a wall of fitted wardrobes as do each of the other three bedrooms and there is another modern family bathroom.

This property is a rare offering because of the space and layout and is offered unfurnished.



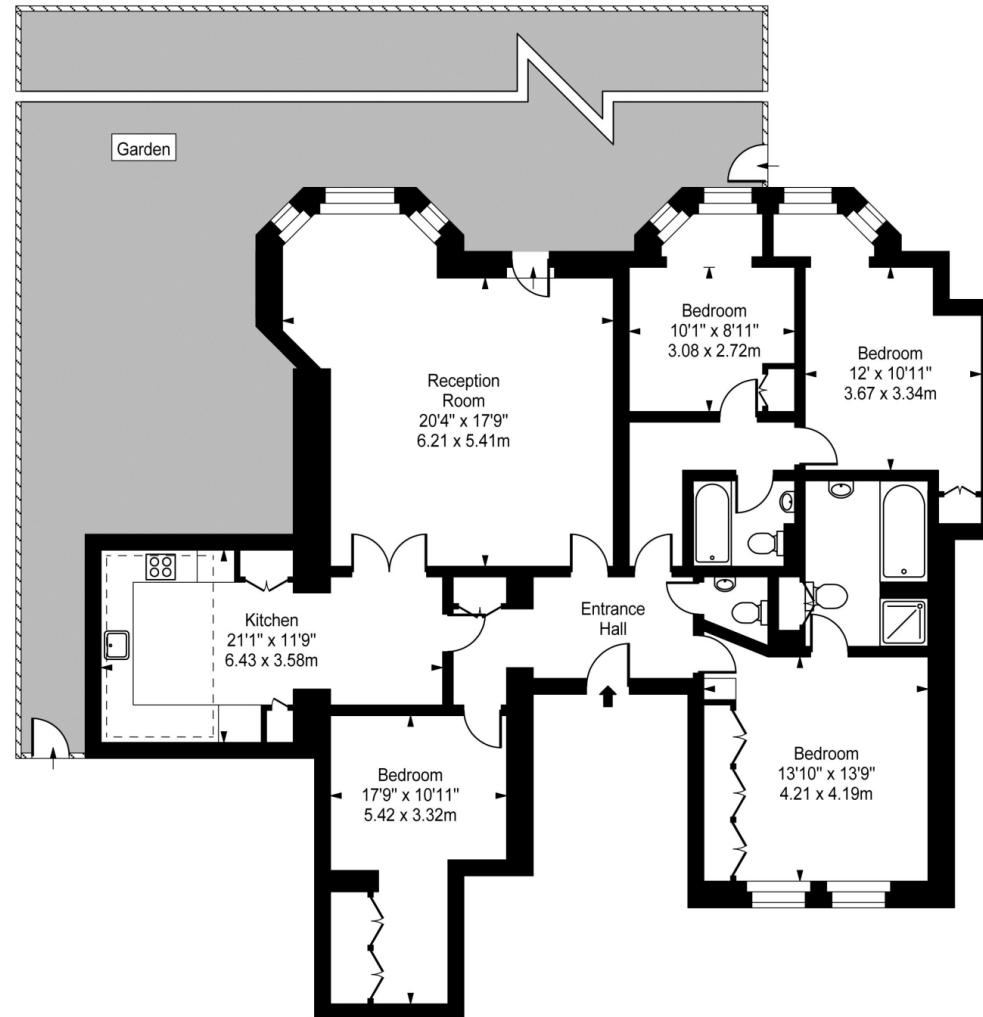








Chesterford Gardens



Lower Ground Floor

Approx Gross Internal Area **1591 Sq Ft - 147.85 Sq M**

For Illustration Purposes Only - Not To Scale
Floor plan by www.creativeplanettk.com

Particulars

Property

Chesterford Gardens, Hampstead, London, NW3
£1,000

Rooms



1



2



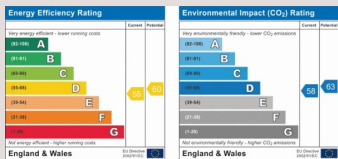
4

Features

- Eat-In Kitchen
- New Carpet In Bedrooms
- Lots Of Storage
- Available 23 October 2019

Information

Council Tax



Oliver Kent

oliver.kent@vitaproperties.uk
+4477 7274 0351



Scan for our website





T: +4420 7759 2199

E: enquiries@vitaproperties.uk

Disclaimer: These particulars are prepared as a general guide for prospective purchasers or tenants and do not constitute, nor constitute part of, an offer or contract. All statements, descriptions, and measurements contained herein are given in good faith and are believed to be correct at the time of printing, but any intending purchaser or tenant should not rely on them as statements or representations of fact and must satisfy themselves by inspection or otherwise as to their correctness. Floor plans and photographs are for illustrative purposes only and may not be to scale. The position and size of doors, windows, appliances, and other features are approximate. Anti-Money Laundering (AML): In line with the Money Laundering, Terrorist Financing and Transfer of Funds Regulations 2017, we are required to carry out customer due diligence checks. Buyers/tenants will be asked to provide proof of identity, address, and source of funds before a sale or rental can be agreed. Data Protection (GDPR): Personal information supplied to Vita Properties will be processed in accordance with the General Data Protection Regulation (GDPR). Your details may be retained for legitimate business purposes relating to property services. Full details of our Privacy Policy are available on request.

All rights reserved.