



Brunswick Place
MARYLEBONE, LONDON, NW1

£2,950



Brunswick Place is situated just off the Outer Circle in Regents Park and is approximately half a mile from Oxford Street.

The closest underground stations are Regents Park Bakerloo Line (approximately 300 yards) and Baker Street Jubilee, Bakerloo, Metropolitan, City & Hammersmith and Circle Lines (0.3 miles) : Description : An elegant home arranged over three floors and including a lock up garage.

This spacious property (approximately 277.4 sq m/2,986 sq f) offers period style charm coupled with contemporary kitchen and bathrooms in a great location adjacent to Regents Park and within 250 yards of fashionable Marylebone High Street. Benefits include access to a private garden square with a summer tennis court and children's playground (subscription cost applies).





The accommodation comprises a principle bedroom with en-suite bathroom, four further bedrooms, family bathroom, en-suite shower room, guest cloakroom, reception room, dining room with study area, family room, kitchen/breakfast room, separate utility room, and a good sized integral garage.





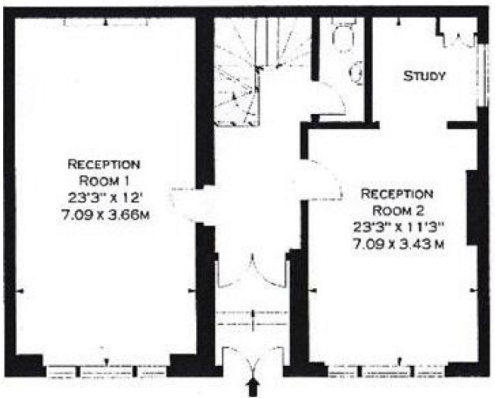




APPROX. GROSS INTERNAL AREA *
2986 FT² - 277.40 M²



LOWER GROUND FLOOR



GROUND FLOOR



FIRST FLOOR

ILLUSTRATION FOR IDENTIFICATION PURPOSES ONLY. NOT TO SCALE
* AS DEFINED BY RICS - CODE OF MEASURING PRACTICE

Particulars

Property

Brunswick Place, Marylebone, London, NW1
£2,950

Rooms



3



4



5+

Features

- Superb location on the edge of the park
- Spacious accomadation split over three floors
- Five Bedrooms
- Garage

Information

Council Tax



Oliver Kent

oliver.kent@vitaproperties.uk
+4477 7274 0351



Scan for our website





T: +4420 7759 2199
E: enquiries@vitaproperties.uk

Disclaimer: These particulars are prepared as a general guide for prospective purchasers or tenants and do not constitute, nor constitute part of, an offer or contract. All statements, descriptions, and measurements contained herein are given in good faith and are believed to be correct at the time of printing, but any intending purchaser or tenant should not rely on them as statements or representations of fact and must satisfy themselves by inspection or otherwise as to their correctness. Floor plans and photographs are for illustrative purposes only and may not be to scale. The position and size of doors, windows, appliances, and other features are approximate. Anti-Money Laundering (AML): In line with the Money Laundering, Terrorist Financing and Transfer of Funds Regulations 2017, we are required to carry out customer due diligence checks. Buyers/tenants will be asked to provide proof of identity, address, and source of funds before a sale or rental can be agreed. Data Protection (GDPR): Personal information supplied to Vita Properties will be processed in accordance with the General Data Protection Regulation (GDPR). Your details may be retained for legitimate business purposes relating to property services. Full details of our Privacy Policy are available on request.

All rights reserved.