



**VITA**  
*Properties*

## Buchanan Gardens, Kensal Rise, London, NW10 | £1,825,000

- Six bedroom mid terrace Edwardian house
- Prime Kensal Rise location, opposite the Elmwood Lawn tennis club
- Catchment for desirable primary schools, walking distance to nurseries
- Moments to all local amenities on College Road and Chamberlayne Road
- Wider house on the road, brimming with period details
- South facing garden

"Vita Properties have been tremendously helpful throughout the process of securing/renting my flat. Informative about the property, prompt communication, easy to use dashboard for sharing of information, and pleasant to work with. Highly recommend!"

Kate Brookfield x Vita Collaborations

An extremely handsome Edwardian house, situated on Buchanan Gardens in Kensal Rise, NW10.

This impressive six bedroom home is brimming with original character and stands as one of the wider houses on the road, offering views directly onto the Elmwood Lawn Tennis Club.

From the road, its striking façade has been beautifully maintained, with a manicured front garden and hedgerow providing extra privacy. The original tiles line the ground-floor hallway, where period cornicing and detailing are immediately on show. Two generous living spaces sit to the front of the home, both with high ceilings and charming period fireplaces. The ground-floor guest bathroom is a full suite, including a bathtub, and the utility space is separate, with a full pantry located ahead of the kitchen. The kitchen/dining room opens onto the south-facing garden and offers comfort and charm, featuring a shaker-style kitchen and original

French doors lead out to the garden, where there is first a sun deck, with a mature grapevine draping over an archway to the side-return area, followed by a perfectly sized garden with shrubs and trees providing much-needed shade.

On the first floor are four bedrooms and a full family bathroom. The second floor offers two further bedrooms and an ensuite bathroom.

Offering 2,264 sq ft, with the opportunity to extend the footprint further on the ground floor (STPP), this very special home has been loved by the current owners for many years and is a rare gem in the neighbourhood.

- 🏠 Terraced
- 🔑 Freehold
- 🛏 x 6
- 🚿 x 2
- 🚽 x 3



Oliver Kent

✉ oliver.kent@vitaproperties.uk  
☎ +4477 7274 0351



wooden floors.

"I was very impressed with Vita and their network of buyers. When the sale of my flat fell through (twice) they worked extremely hard to find new buyers in a difficult market - thank you!"

---



"Working with Vita properties has been a smooth experience! No complaints at all. Our letting agent, Diana has been fantastic and very helpful throughout the whole process. I would highly recommend both Vita properties and Diana."

---



"I used Vita properties to find a flat recently and it was an overall professional, personalised and positive experience. Saira went the extra mile to accommodate to our needs and quick to help us whenever possible."

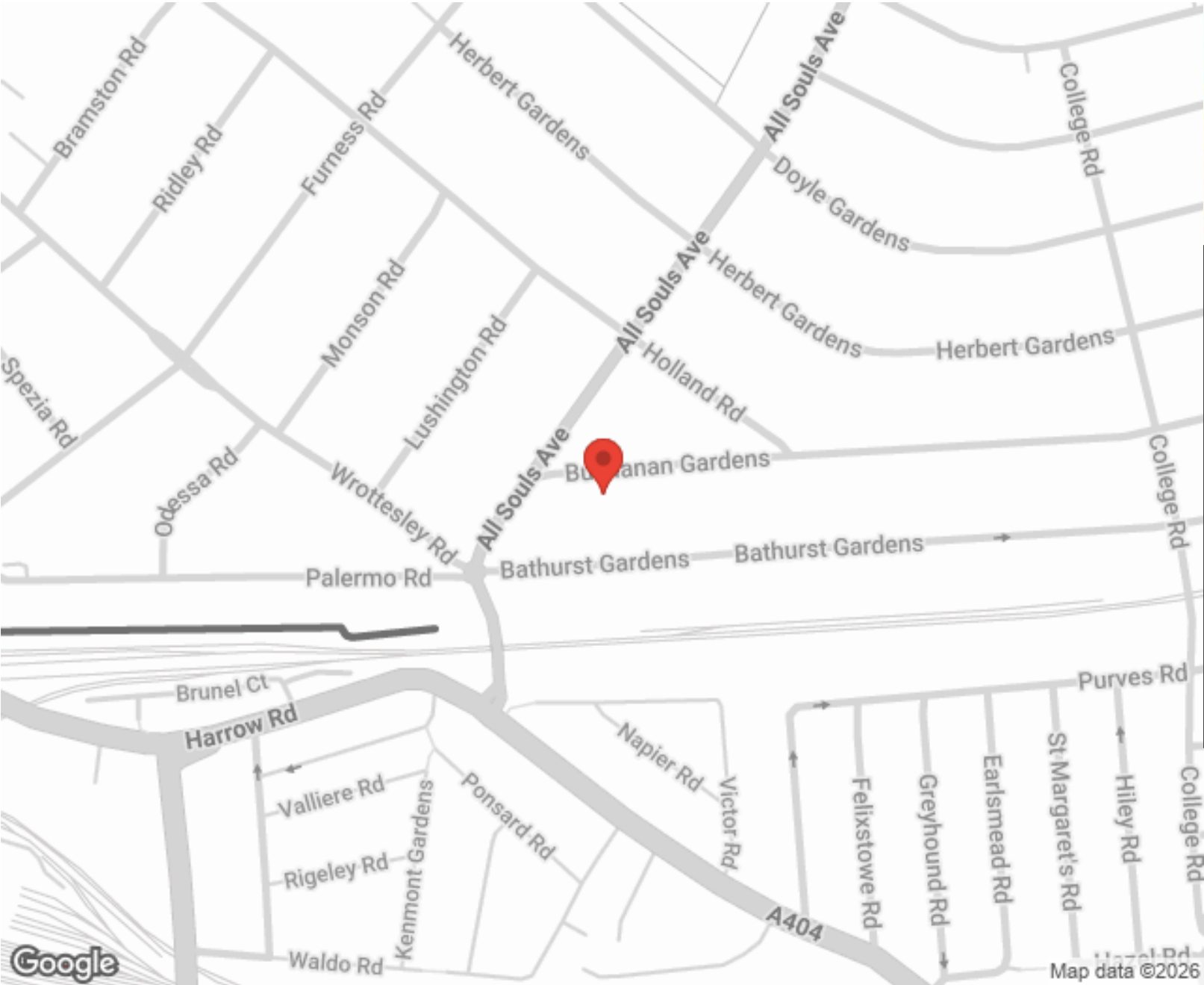
---



MORE INFO, PICTURES,  
CONTACT ON  
OUR WEBSITE



"Vita Properties is a very professional agency. My experience with them was incredible and the entire team was very helpful and kind throughout the renting process. I'd highly recommend!"



Score	Energy rating	Current	Potential
92+	A		
81-91	B		81 B
69-80	C		
55-68	D	67 D	
39-54	E		
21-38	F		
1-20	G		

SCAN FOR MORE  
GOOGLE REVIEWS

Google  
★★★★★  
4.9 Stars | 132 Reviews

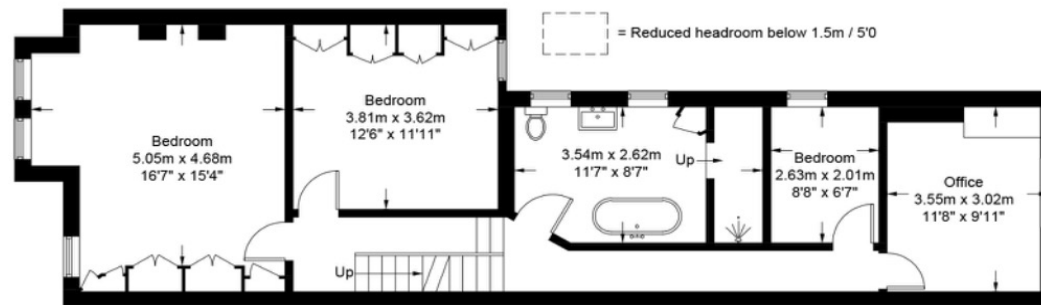
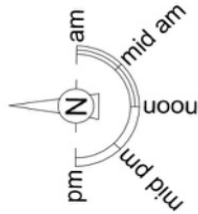
Find us on social media

vitaproperties  
 VitaProperties  
 VitaProperties

# Buchanan Gardens, NW10

Approximate Gross Internal Area = 2264 sq ft / 210.3 sq m

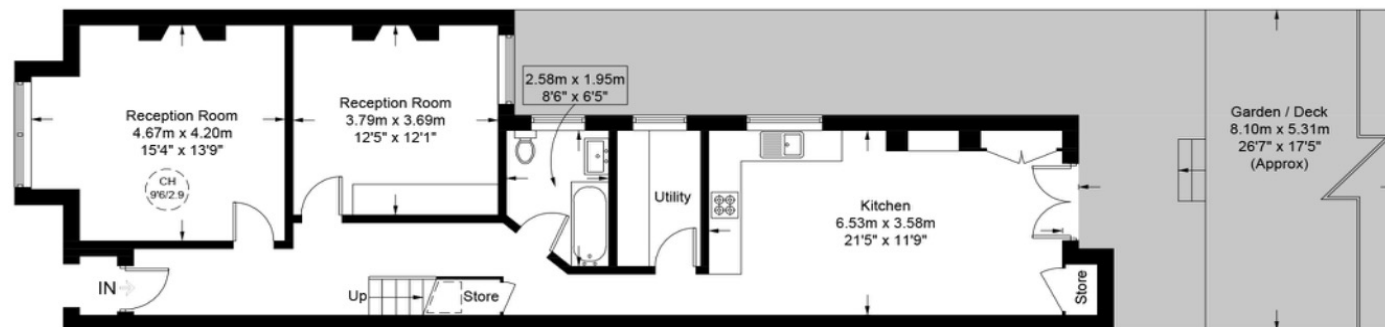
Restricted Height = 77 sq ft / 7.2 sq m



First Floor



Second Floor



Ground Floor

This plan is for layout guidance only and is not drawn to scale unless stated. All dimensions, including windows, doors, and the Total Gross Internal Area (GIA), are approximate. For precise measurements, please consult a qualified architect or surveyor before making any decisions based on this plan.



Certified  
Property  
Measurer