

Shh!

Off Market Property



The Bishops Avenue, London N2 | £0

- Opportunity to create your new home
- Off Street Parking for Multiple Cars
- Corner Plot
- Unique Opportunity

- Chain Free
- Potential to extend SSTP

"Vita Properties have been tremendously helpful throughout the process of securing/renting my flat. Informative about the property, prompt communication, easy to use dashboard for sharing of information, and pleasant to work with. Highly recommend!"

Presenting a truly unique opportunity to acquire a substantial five-bedroom house in a desirable London location, this property offers an exciting canvas for those looking to create their dream home. Situated on a generous corner plot, this residence boasts an impressive footprint and considerable scope for enhancement, making it an ideal prospect for discerning buyers seeking a project with immense potential.

Upon entering, you are greeted by a spacious and versatile layout, currently comprising three reception rooms, providing ample space for both formal entertaining and relaxed family living. The existing configuration offers a solid foundation, allowing new owners to reimagine and reconfigure the interiors to suit their personal taste and lifestyle requirements. With five well-proportioned bedrooms and four bathrooms, the property already caters to the needs of a large family, ensuring comfort and convenience from day one.

One of the most compelling features of this house is the significant potential to extend, subject to the necessary planning permissions (SSTP). The expansive corner plot provides the perfect setting for a substantial extension, whether you envision additional living areas, an enlarged kitchen-diner, or further bedrooms. This flexibility allows for a bespoke transformation, enabling you to maximise the property's value and functionality.

- 🏠 Detached
- 🔑 Freehold
- 🛏 x 5
- 🚿 x 3
- 🚽 x 4

SCAN FOR
A VIDEO
WALKTHROUGH



Oliver Kent

✉ oliver.kent@vitaproperties.uk
☎ +4477 7274 0351



"I was very impressed with Vita and their network of buyers. When the sale of my flat fell through (twice) they worked extremely hard to find new buyers in a difficult market - thank you!"



"Working with Vita properties has been a smooth experience! No complaints at all. Our letting agent, Diana has been fantastic and very helpful throughout the whole process. I would highly recommend both Vita properties and Diana."



"I used Vita properties to find a flat recently and it was an overall professional, personalised and positive experience. Saira went the extra mile to accommodate to our needs and quick to help us whenever possible."



MORE INFO, PICTURES,
CONTACT ON
OUR WEBSITE



"Vita Properties is a very professional agency. My experience with them was incredible and the entire team was very helpful and kind throughout the renting process. I'd highly recommend!"



SCAN FOR MORE
GOOGLE REVIEWS




Google




4.9 Stars | 132 Reviews

Find us on social media

 vitaproperties

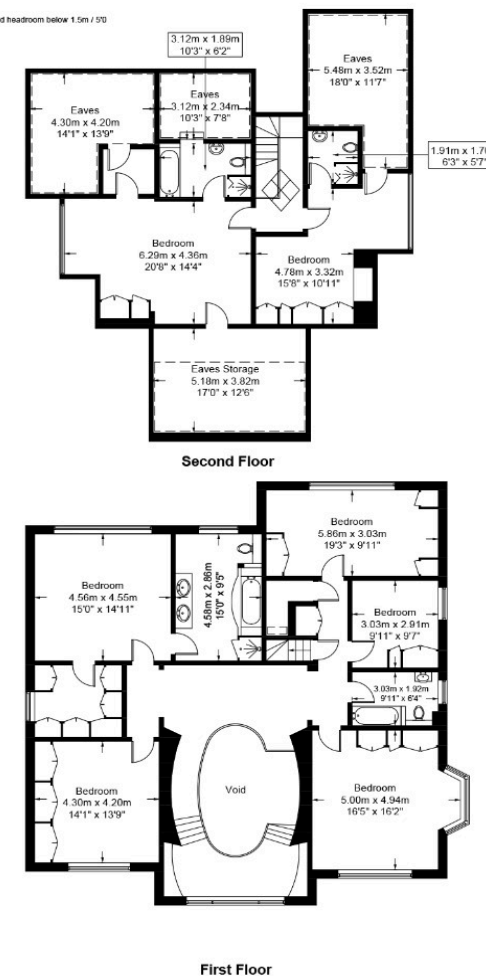
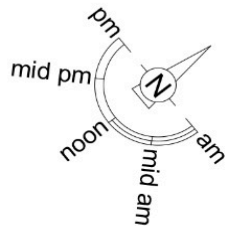
 VitaProperties

 VitaProperties

Bishops Avenue, N2

Approximate Gross Internal Area = 5730 sq ft / 532.3 sq m

Restricted Height = 554 sq ft / 51.5 sq m



This plan is for layout guidance only and is not drawn to scale unless stated. All dimensions, including windows, doors, and the Total Gross Internal Area (GIA), are approximate. For precise measurements, please consult a qualified architect or surveyor before making any decisions based on this plan.



Certified
Property
Measurer