



Makers Building, 1 Jasper Walk, Shoreditch, London N1 | £3,000,000

- Gym, Treatment room & Cinema
- Library lounge and garden lounge
- 7 year NHBC warranty
- 2 residents' roof gardens

- Penthouse
- Private Terrace
- Underfloor heating

"Vita Properties have been tremendously helpful throughout the process of securing/renting my flat. Informative about the property, prompt communication, easy to use dashboard for sharing of information, and pleasant to work with. Highly recommend!"

The Penthouse is the crown jewel—spanning over 2,300 sqft with three bedrooms, two bathrooms, a guest W/C, utility room and generous storage. Floor-to-ceiling windows flood the home with natural light, while the landscaped west-facing roof garden provides breathtaking views—perfect for entertaining or quiet moments of calm. A state-of-the-art Crestron home automation system, ceiling speakers in the living room and master suite, and electric blinds elevate the living experience with seamless comfort and control.

Every finish has been carefully curated: herringbone floors, quartz stone worktops and Miele appliances in the kitchen, honed Italian marble in the bathrooms, plush broadloom carpets in the bedrooms, and bespoke Italian wardrobes by Lema with smoked oak veneer and brass accents. Bathrooms are designed as private retreats, featuring porcelain mosaic tiling, black brassware, heated towel rails and custom vanity cabinets.

Amenities rival a five-star hotel. A striking double-height entrance lobby by Woods Bagot sets the tone with terrazzo flooring, smoked oak chevron details, brass finishes and bespoke furniture. A 24/7 concierge, secure mail and delivery service, and basement cycle storage for 335 bicycles ensure convenience. Residents also enjoy exclusive access to a lounge for work or socialising, a private screening room, a fully equipped gym with adjoining treatment room, and two beautifully landscaped roof gardens by Grant Associates. Additional highlights include the Garden Room—a conservatory-style lounge overlooking the roof garden—and a serene Library Lounge with terrazzo, brass and oak accents.

-  Penthouse
-  Leasehold
-  x 3
-  x 1
-  x 3

SCAN FOR
A VIDEO
WALKTHROUGH

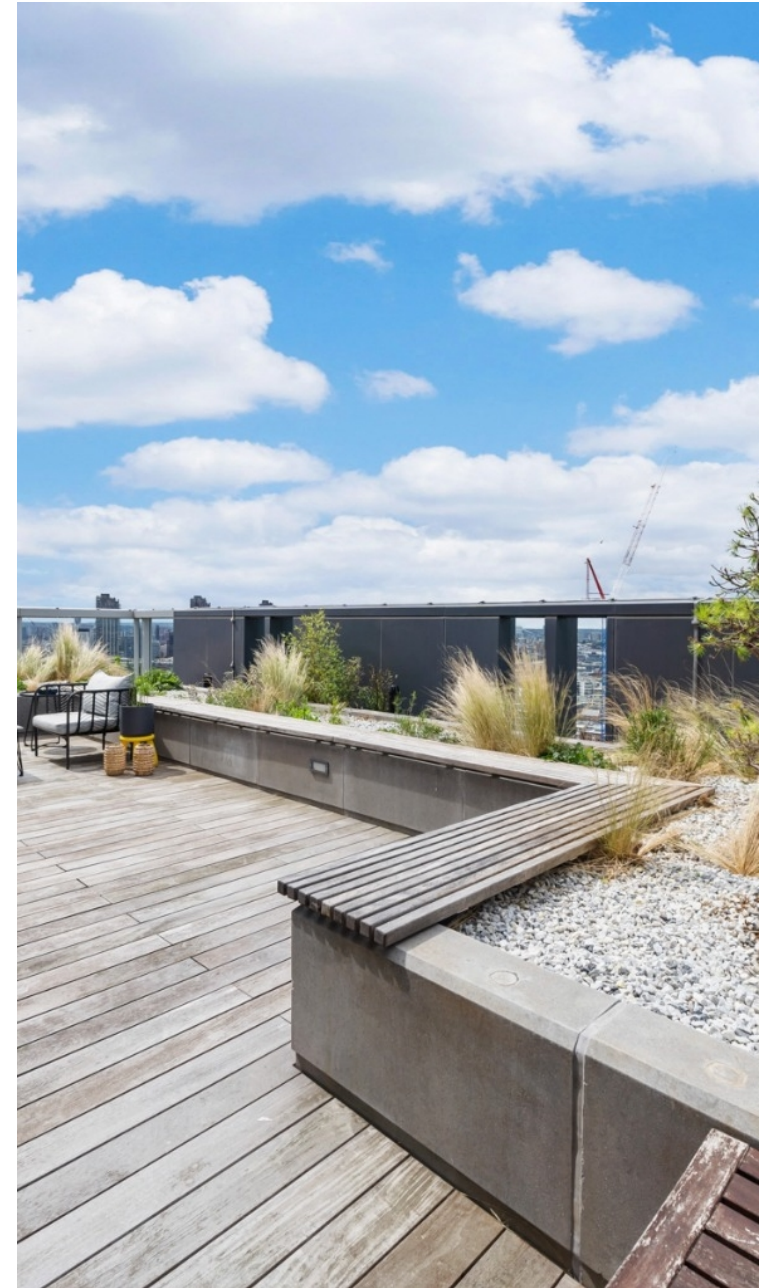


Oliver Kent

 oliver.kent@vitaproperties.uk
 +4477 7274 0351



"I was very impressed with Vita and their network of buyers. When the sale of my flat fell through (twice) they worked extremely hard to find new buyers in a difficult market - thank you!"



"Working with Vita properties has been a smooth experience! No complaints at all. Our letting agent, Diana has been fantastic and very helpful throughout the whole process. I would highly recommend both Vita properties and Diana."



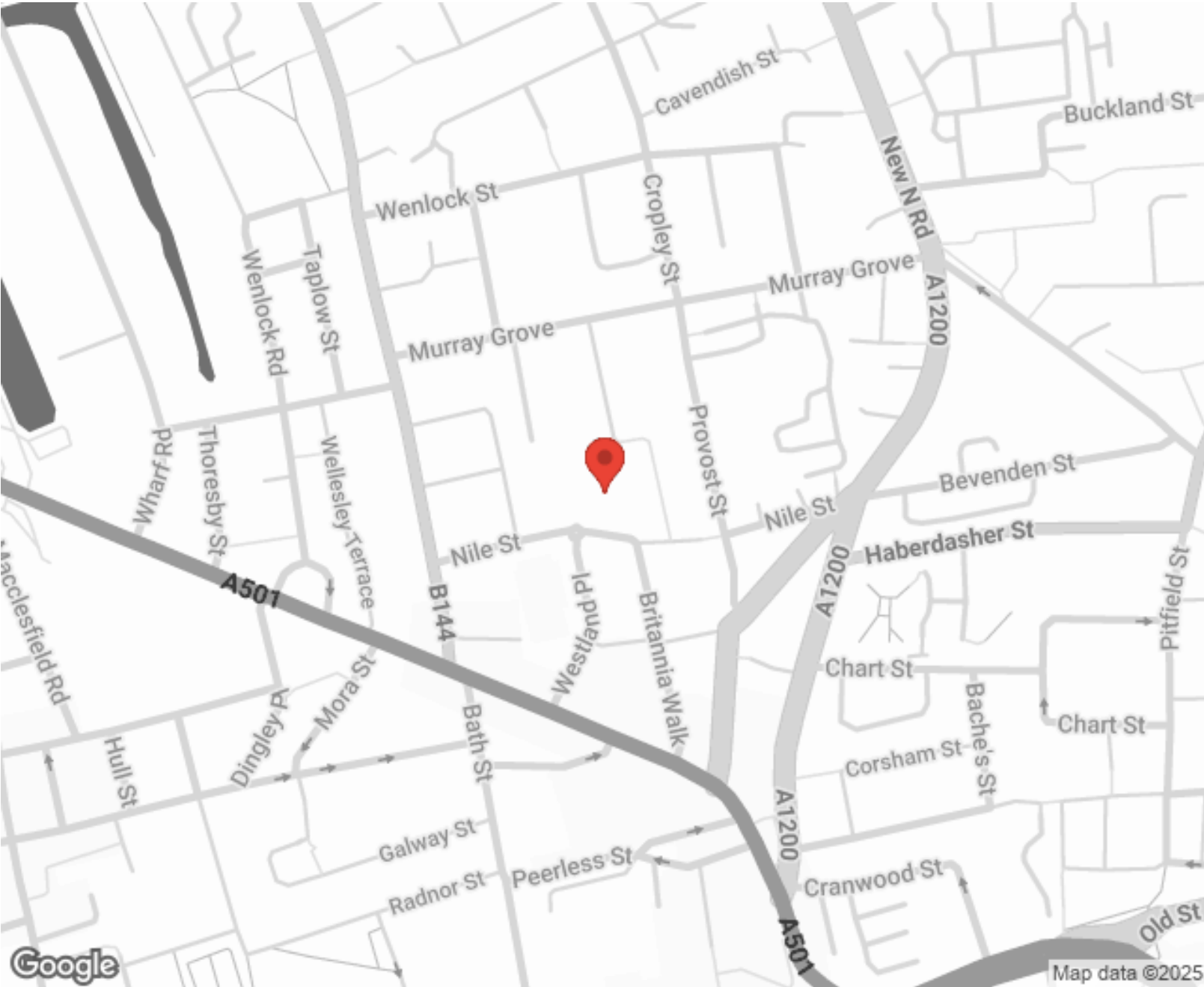
"I used Vita properties to find a flat recently and it was an overall professional, personalised and positive experience. Saira went the extra mile to accommodate to our needs and quick to help us whenever possible."



MORE INFO, PICTURES,
CONTACT ON
OUR WEBSITE



"Vita Properties is a very professional agency. My experience with them was incredible and the entire team was very helpful and kind throughout the renting process. I'd highly recommend!"



Energy Efficiency Rating		
	Current	Potential
Very energy efficient - lower running costs		
(92+) A		
(81-91) B	89	89
(69-80) C		
(55-68) D		
(39-54) E		
(21-38) F		
(1-20) G		
Not energy efficient - higher running costs		
England & Wales		
		EU Directive 2002/91/EC

SCAN FOR MORE
GOOGLE REVIEWS

Google
★★★★★
4.9 Stars | 132 Reviews

Find us on social media

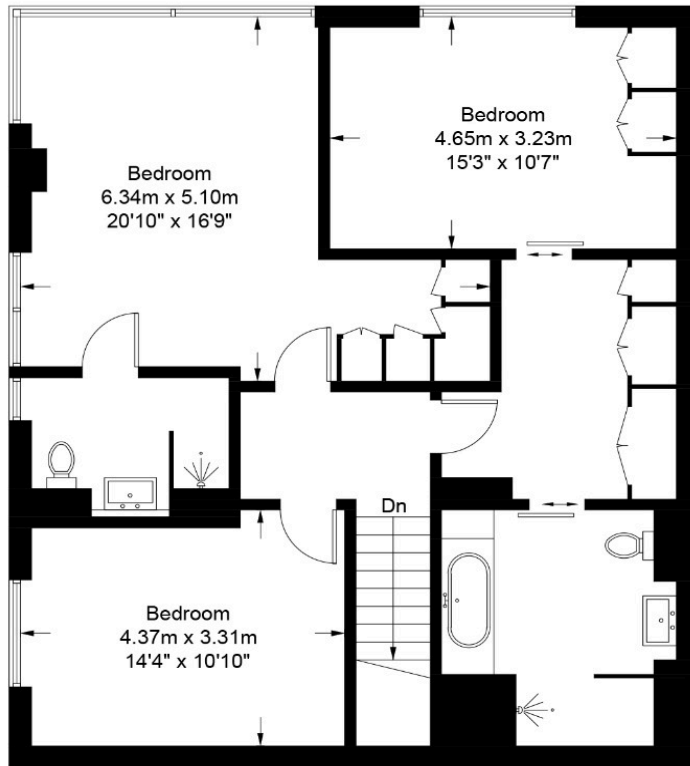
vitaproperties

VitaProperties

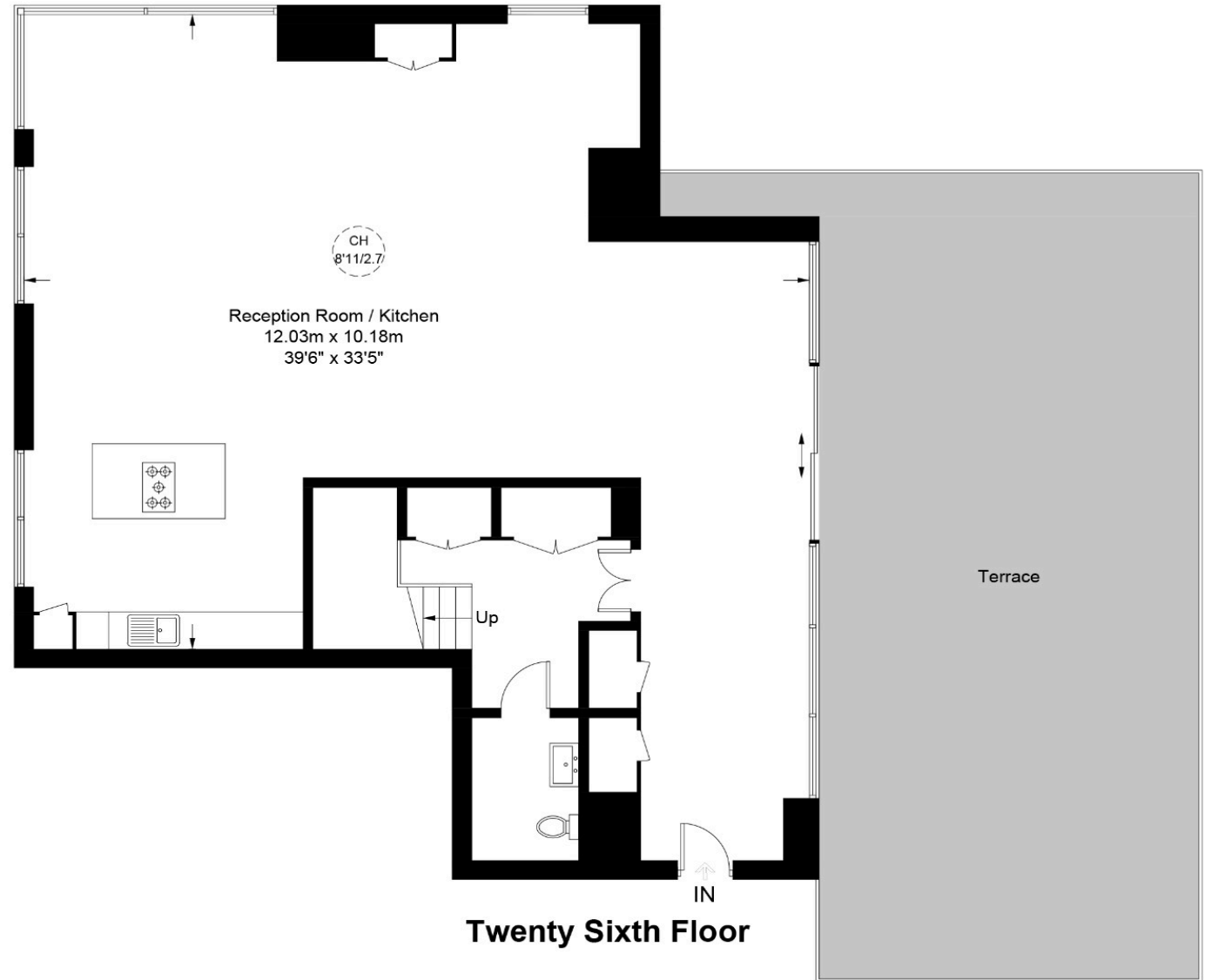
VitaProperties

Makers Building, N1

Approximate Gross Internal Area = 2354 sq ft / 218.7 sq m



Twenty Fifth Floor



Twenty Sixth Floor



**Certified
Property
Measurer**

This plan is for layout guidance only. Not drawn to scale unless stated. Windows and door openings are approximate. Whilst every care is taken in the preparation of this plan, please check all dimensions, shapes and compass bearings before making any decisions reliant upon them. (ID995354)