



VITA
Properties

Chelmsford Square, Kensal Rise, London NW10 | £8,000

- Available From September 2025
- Residents Green and Tennis Courts
- Fully Renovated and Extended
- Ample Natural Light Throughout

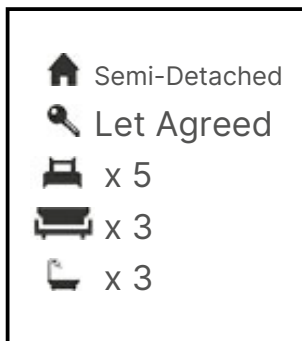
- Private Rear Garden
- Off-Street Parking

"Vita Properties have been tremendously helpful throughout the process of securing/renting my flat. Informative about the property, prompt communication, easy to use dashboard for sharing of information, and pleasant to work with. Highly recommend!"

Occupying a prized corner plot on one of the area's most desirable roads, this exceptional property offers direct access to a beautiful communal green and gated tennis courts. Fully renovated and thoughtfully extended in 2021, the house now provides over 3,000 square feet of high-specification living space arranged over three floors.

The ground floor is designed for modern family living, with a near open-plan layout subtly divided by internal Crittall-style doors and glazing. At its heart is a bespoke kitchen featuring a large island with seating for six, which flows into a spacious dining area illuminated by an oriel window and full-width sliding doors opening onto the garden. A cosy seating area with a wood-burning stove connects back to the wide entrance hallway. A second wood-burning stove enhances the formal living room, which includes a concealed door leading to a home office or snug with French doors opening onto the front garden. A large utility room is located next to the kitchen, offering access to the rear garden and a guest WC.

The first floor comprises three generous double bedrooms, a stylish family bathroom, and a luxurious principal suite with en suite shower room and a private terrace. The top floor features a spacious bedroom with its own en suite bathroom, ideal for guests or older children seeking privacy.

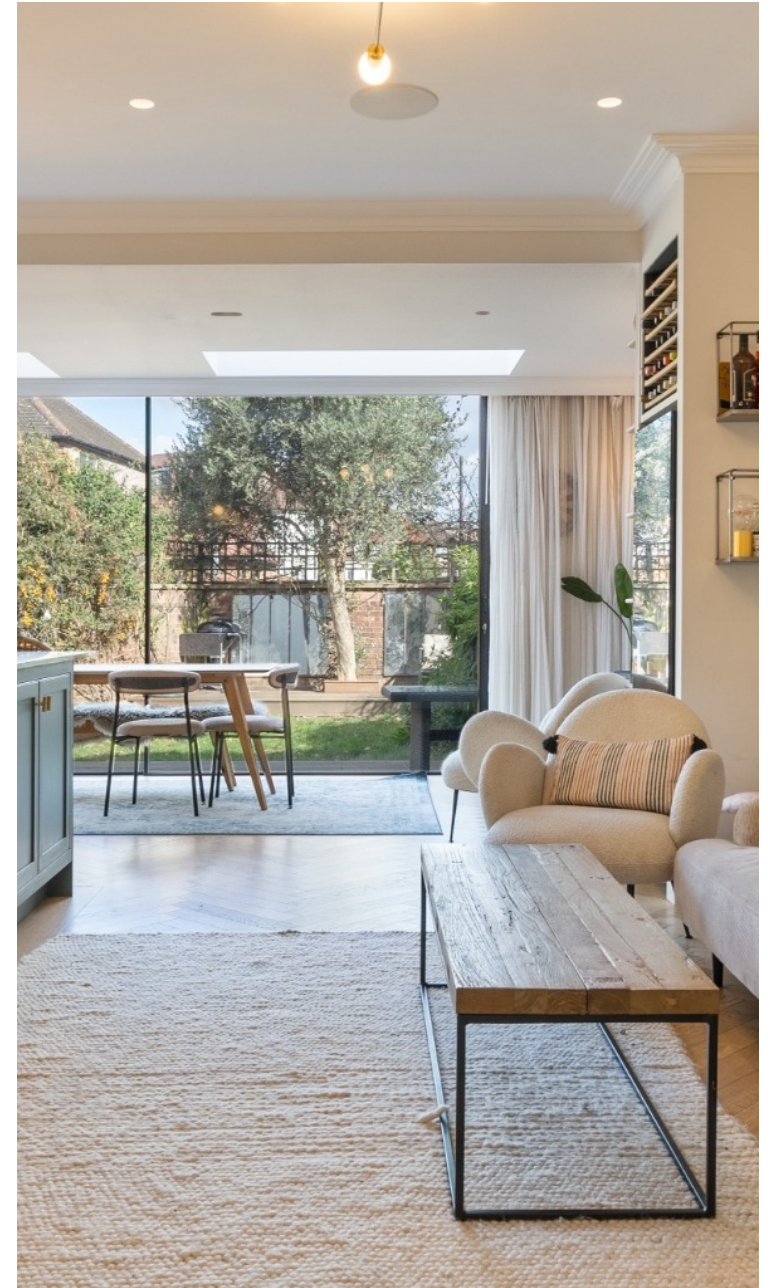


Oliver Kent

✉ oliver.kent@vitaproperties.uk
☎ +4477 7274 0351



"I was very impressed with Vita and their network of buyers. When the sale of my flat fell through (twice) they worked extremely hard to find new buyers in a difficult market - thank you!"



"Working with Vita properties has been a smooth experience! No complaints at all. Our letting agent, Diana has been fantastic and very helpful throughout the whole process. I would highly recommend both Vita properties and Diana."



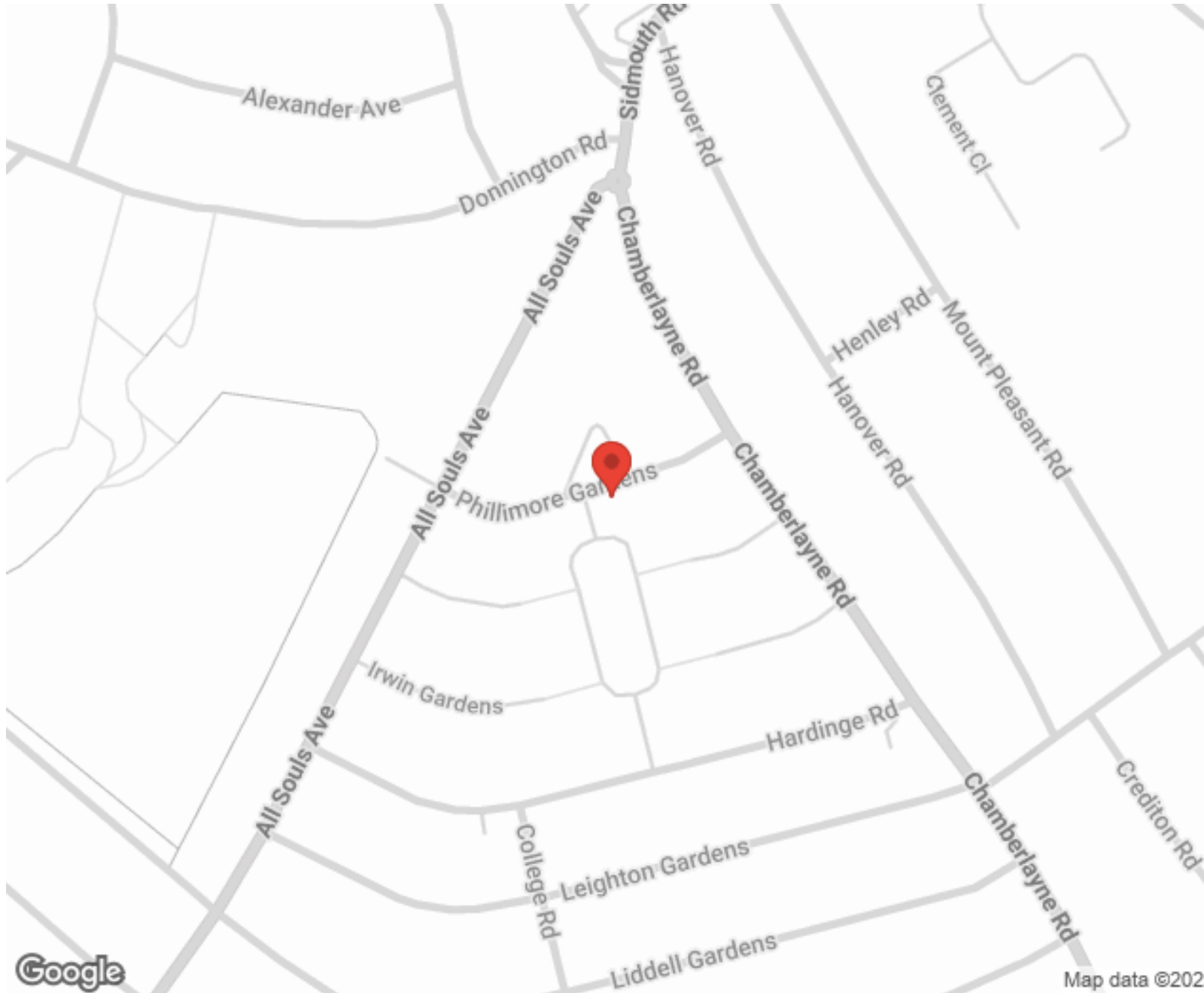
"I used Vita properties to find a flat recently and it was an overall professional, personalised and positive experience. Saira went the extra mile to accommodate to our needs and quick to help us whenever possible."



MORE INFO, PICTURES,
CONTACT ON
OUR WEBSITE



"Vita Properties is a very professional agency. My experience with them was incredible and the entire team was very helpful and kind throughout the renting process. I'd highly recommend!"



SCAN FOR MORE
GOOGLE REVIEWS



Google



4.9 Stars | 132 Reviews

Find us on social media

 vitaproperties

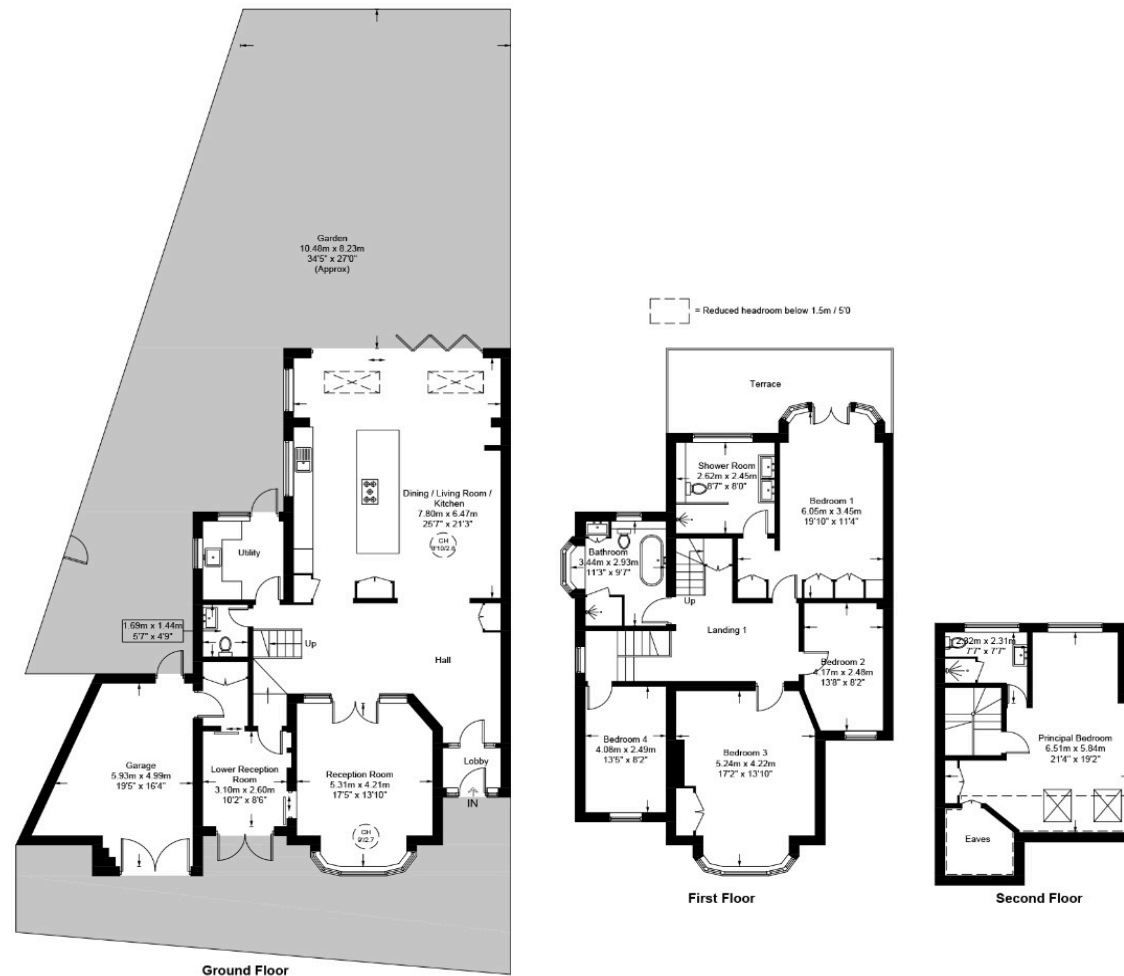
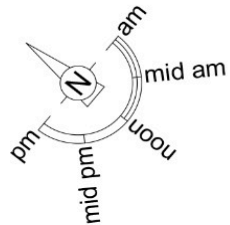
 VitaProperties

 VitaProperties

Chelmsford Square, NW10

Approximate Gross Internal Area = 3208 sq ft / 298.1 sq m

Restricted Height = 105 sq ft / 9.8 sq m



This plan is for layout guidance only and is not drawn to scale unless stated. All dimensions, including windows, doors, and the Total Gross Internal Area (GIA), are approximate. For precise measurements, please consult a qualified architect or surveyor before making any decisions based on this plan.



Certified
Property
Measurer