



381 Harrow Road, Maida Vale, London, W9 .| £525,000

- Beautiful interiors
- Versatile one to two bedroom apartment
- Excellent fitted storage
- Walking distance to Westbourne Park Station
- Moments to Notting Hill, Golborne Road and Grand Union Canal.
- High ceilings and natural light

"Vita Properties have been tremendously helpful throughout the process of securing/renting my flat. Informative about the property, prompt communication, easy to use dashboard for sharing of information, and pleasant to work with. Highly recommend!"

Kate Brookfield x Vita Properties are

delighted to present this beautifully renovated first-floor apartment, ideally positioned just moments from Westbourne Park Station and the Grand Union Canal.

Situated on Harrow Road near the junction with Elgin Avenue and Great

Western Road, this stylish home offers the perfect base for those looking to be within walking distance of Notting Hill, Maida Vale, and the vibrant local amenities.

Originally configured as a two-bedroom apartment, the current owners have thoughtfully reimaged the space as a generous one-bedroom home, with versatility to easily reinstate the second bedroom if desired.

Their meticulous renovation blends modern design with clever space-saving features, including bespoke fitted wardrobes, hidden desks, and recessed seating areas.

The standout feature is the stunning kitchen/dining room — a bright, airy space with high ceilings, large sash windows, original floorboards,

A full-width, floor-to-ceiling bespoke installation houses a hidden pull-out desk, integrated storage, and a recessed reading bench.

To the rear of the apartment, a few steps lead down to a spacious reception room (currently used as a living area but easily adaptable as a second bedroom), benefiting from a south-facing window and an abundance of natural light. A classically styled bathroom and a generous principal bedroom with excellent built-in storage and high ceilings complete the layout.

The current owners have also styled the flat roof space accessed via the rear window.

 Flat

 Leasehold

 x 2

 x 1

 x 1



Oliver Kent

 [oliver.kent@vitaproperties.uk](mailto:oliver.kent@vitaproperties.uk)  
 +4477 7274 0351



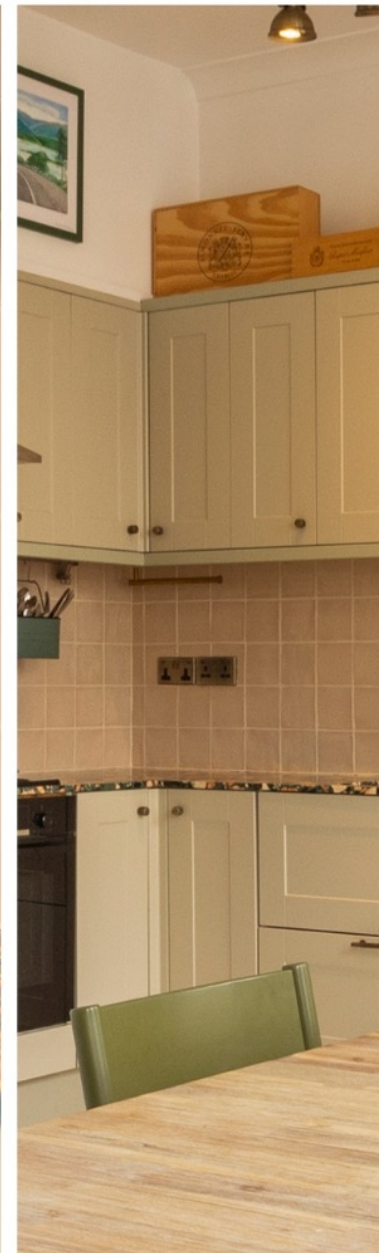


terrazzo worktops, and brushed

brass accents.

"I was very impressed with Vita and their network of buyers. When the sale of my flat fell through (twice) they worked extremely hard to find new buyers in a difficult market - thank you!"

---





"Working with Vita properties has been a smooth experience! No complaints at all. Our letting agent, Diana has been fantastic and very helpful throughout the whole process. I would highly recommend both Vita properties and Diana."

---





"I used Vita properties to find a flat recently and it was an overall professional, personalised and positive experience. Saira went the extra mile to accommodate to our needs and quick to help us whenever possible."

---

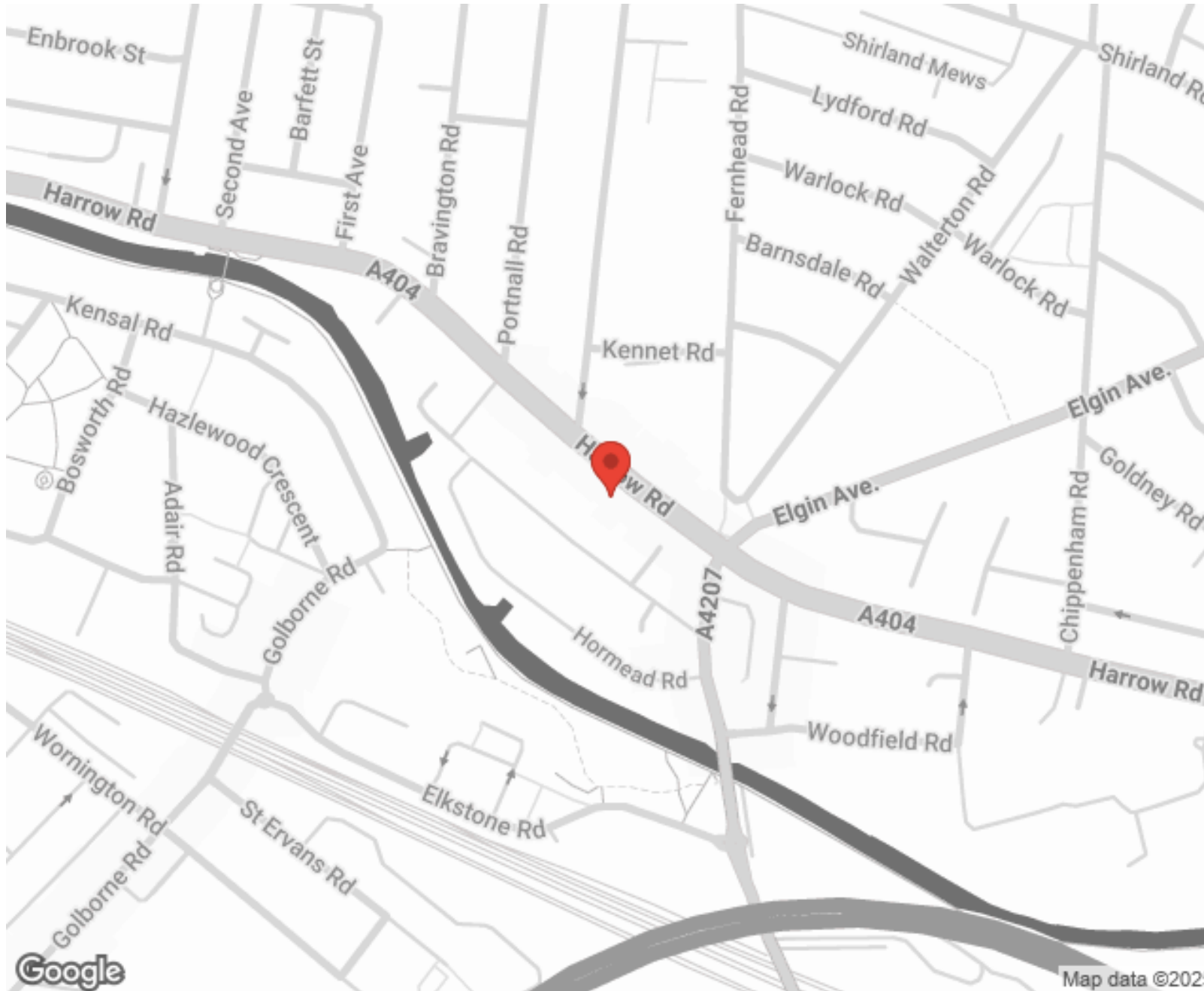


MORE INFO, PICTURES,  
CONTACT ON  
OUR WEBSITE



"Vita Properties is a very professional agency. My experience with them was incredible and the entire team was very helpful and kind throughout the renting process. I'd highly recommend!"

---



SCAN FOR MORE  
GOOGLE REVIEWS



Google




4.9 Stars | 132 Reviews

Find us on social media

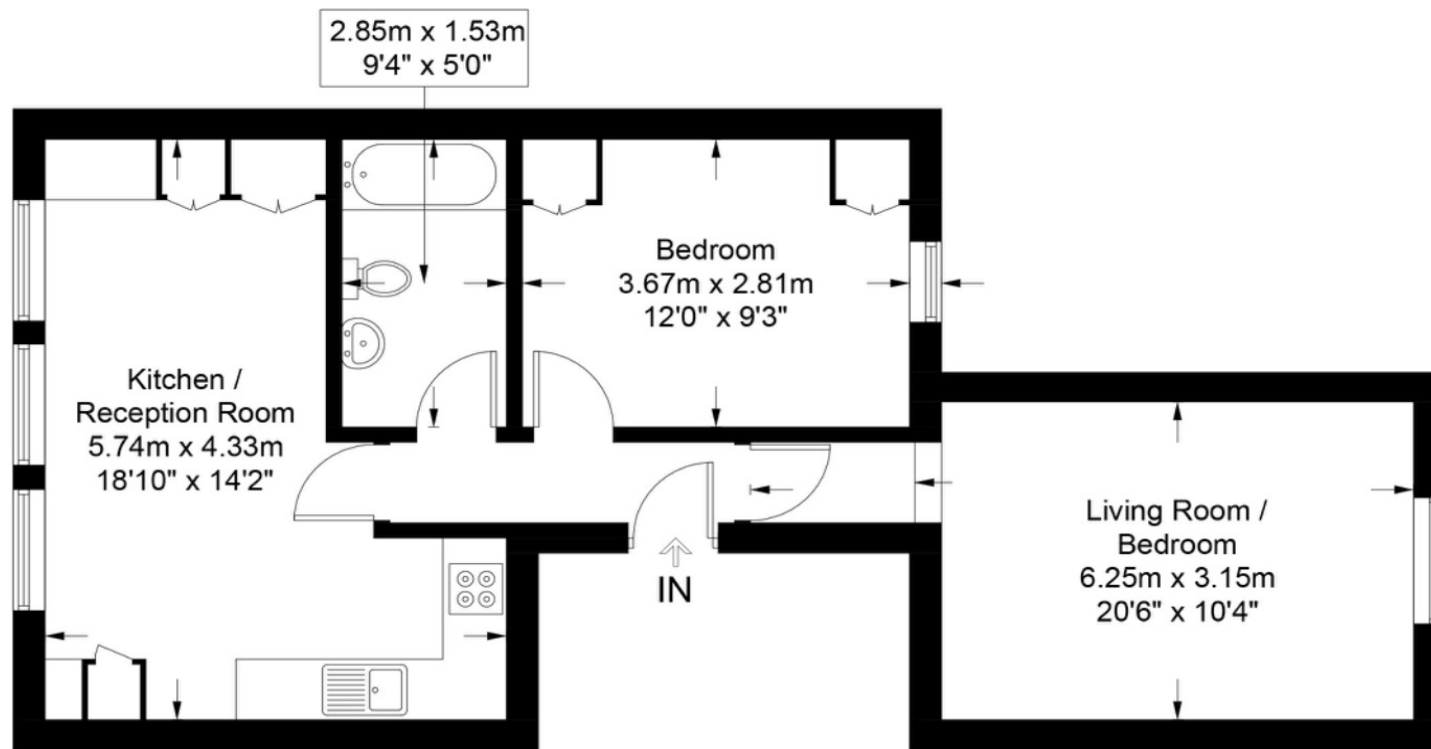
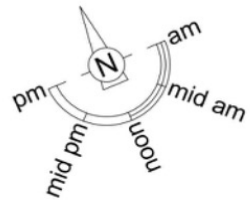
 vitaproperties

 VitaProperties

 VitaProperties

**Harrow Road, W9**

**Approximate Gross Internal Area = 580 sq ft / 53.9 sq m**



**First Floor**

This plan is for layout guidance only and is not drawn to scale unless stated. All dimensions, including windows, doors, and the Total Gross Internal Area (GIA), are approximate. For precise measurements, please consult a qualified architect or surveyor before making any decisions based on this plan.



**Certified  
Property  
Measurer**