



Mountview Close, Hampstead Garden Suburb, London, NW11 . | £4,500

-
- West Facing Balcony
 - Off -Street Parking For Two Cars
 - Portered Block
 - Gym On Site
 - Unfurnished
 - Close To Hampstead Heath

"Vita Properties have been tremendously helpful throughout the process of securing/renting my flat. Informative about the property, prompt communication, easy to use dashboard for sharing of information, and pleasant to work with. Highly recommend!"

Available from 14th July 2025, this well-appointed three-bedroom flat in Hampstead Garden Suburb offers a smart mix of space, comfort, and convenience.

Set on Mountview Close, the property suits families or professionals looking for a peaceful setting with quick access to central London. The flat includes three spacious bedrooms with large windows and neutral décor—bright, functional spaces ready to make your own. Two modern bathrooms are well designed, with clean finishes and practical layouts that suit shared living.

The reception room offers plenty of space for both relaxing and dining, while the kitchen features integrated appliances and thoughtful storage, keeping things simple and efficient. Local shops, cafes, and green spaces are all nearby, and excellent transport links make getting around easy.

A straightforward, well-located home that's ready to go. Early viewings are recommended.



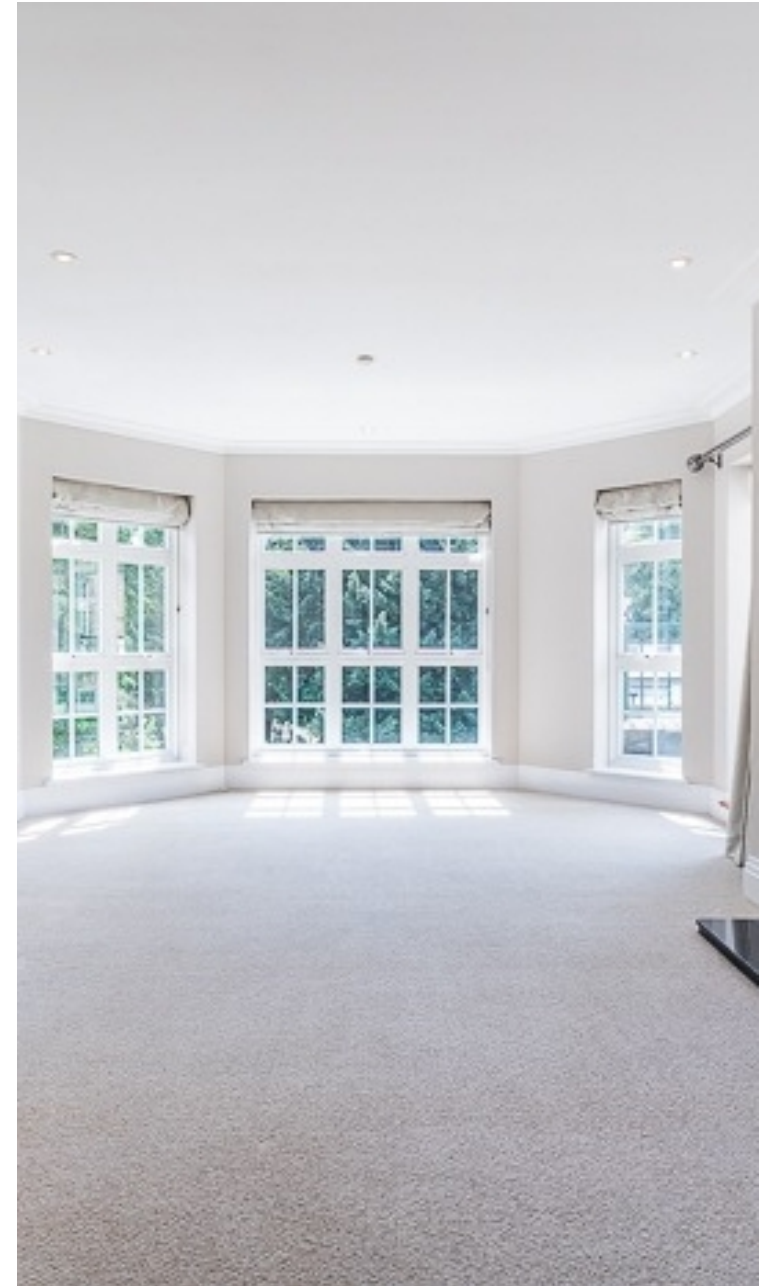
Oliver Kent

✉ oliver.kent@vitaproperties.uk

☎ +4477 7274 0351



"I was very impressed with Vita and their network of buyers. When the sale of my flat fell through (twice) they worked extremely hard to find new buyers in a difficult market - thank you!"



"Working with Vita properties has been a smooth experience! No complaints at all. Our letting agent, Diana has been fantastic and very helpful throughout the whole process. I would highly recommend both Vita properties and Diana."



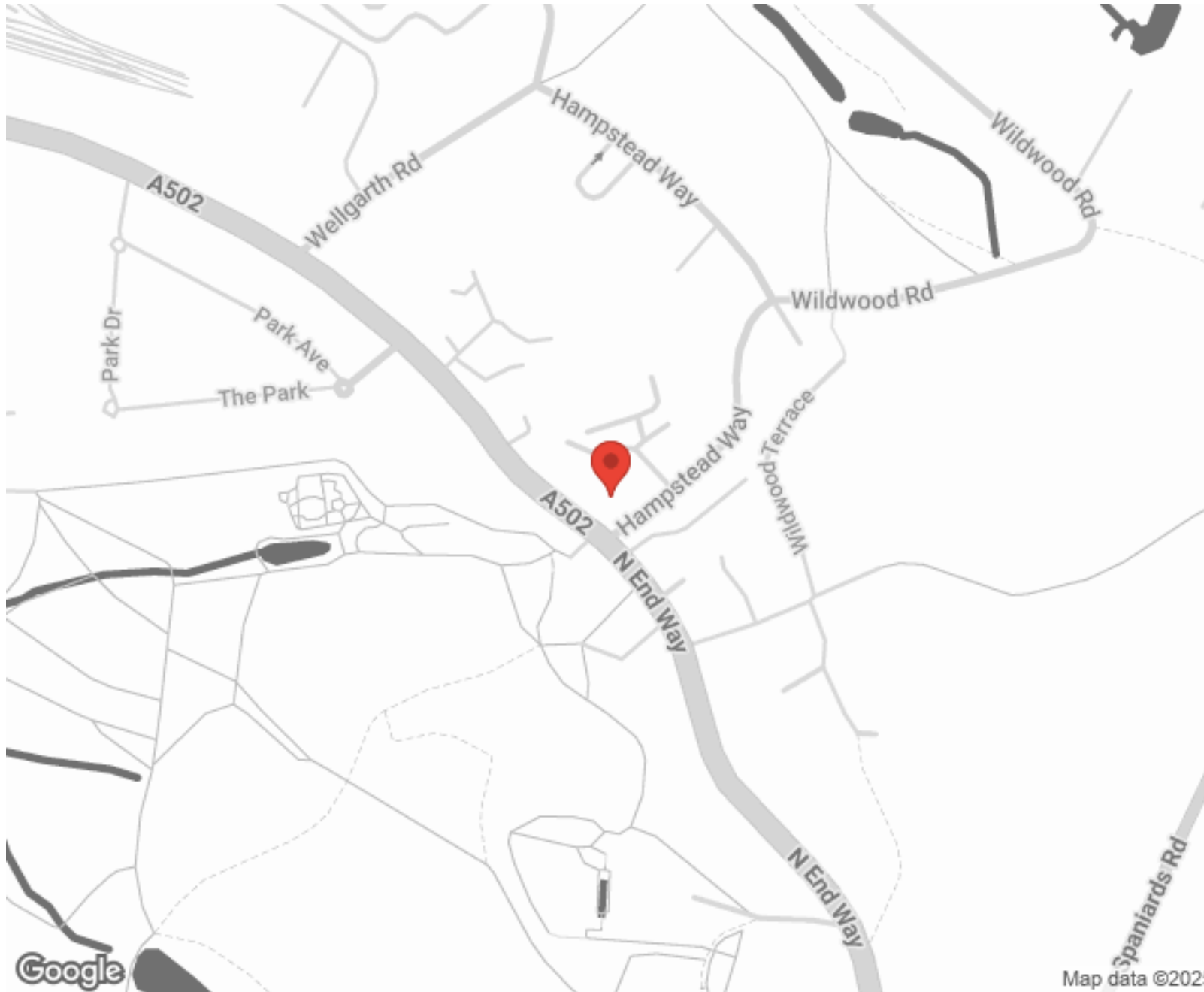
"I used Vita properties to find a flat recently and it was an overall professional, personalised and positive experience. Saira went the extra mile to accommodate to our needs and quick to help us whenever possible."



**MORE INFO, PICTURES,
CONTACT ON
OUR WEBSITE**



"Vita Properties is a very professional agency. My experience with them was incredible and the entire team was very helpful and kind throughout the renting process. I'd highly recommend!"



SCAN FOR MORE
GOOGLE REVIEWS

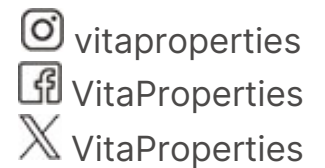


Google



4.9 Stars | 132 Reviews

Find us on social media



MOUNTVIEW CLOSE, NW11
TOTAL APPROX. FLOOR AREA 1367 SQ. FT. (127.0 SQ. M.)
SECOND FLOOR

