



VITA
Properties

Fordwych Road, West Hampstead, London NW2 | £9,000

- Bespoke Joinery
- Solar Heating
- Landscaped Garden
- Italian Tiles

- Large Living Space
- 2 Off Street Parking Spaces


"Vita Properties have been tremendously helpful throughout the process of securing/renting my flat. Informative about the property, prompt communication, easy to use dashboard for sharing of information, and pleasant to work with. Highly recommend!"

Presenting a Luxurious Fully Refurbished 5-Bedroom Haven – Unrivalled Custom Joinery, Exquisite Landscaped Garden, and Seamless Access to Multiple Transport Links

Step into this brand new 5-bedroom haven that redefines luxury living. Attention to details has allowed, this residence to surpasses expectations with its opulent custom joinery, impeccable craftsmanship, and an enchanting landscaped garden. Nestled in a highly sought-after location, this home boasts seamless access to a multitude of transport links, ensuring a lifestyle of convenience and connectivity.

Beyond the grand foyer lies a sprawling double reception area that bathes in natural light, fostering a welcoming atmosphere for unforgettable gatherings and cherished family moments. The open-plan layout embraces modernity, harmoniously uniting the living and dining spaces for an expansive and versatile entertainment zone.

A beautifully installed kitchen stands as a masterpiece, boasting top-of-the-line stainless steel appliances, lustrous granite countertops, and custom joinery that epitomizes both form and function. Prepare culinary delights in style, while the adjoining breakfast nook presents a delightful spot to relish tranquil mornings amidst the captivating landscaped garden.

-  Semi-Detached
-  Long Term
-  x 5
-  x 2
-  x 3



Oliver Kent

 oliver.kent@vitaproperties.uk
 +4477 7274 0351



"I was very impressed with Vita and their network of buyers. When the sale of my flat fell through (twice) they worked extremely hard to find new buyers in a difficult market - thank you!"



"Working with Vita properties has been a smooth experience! No complaints at all. Our letting agent, Diana has been fantastic and very helpful throughout the whole process. I would highly recommend both Vita properties and Diana."



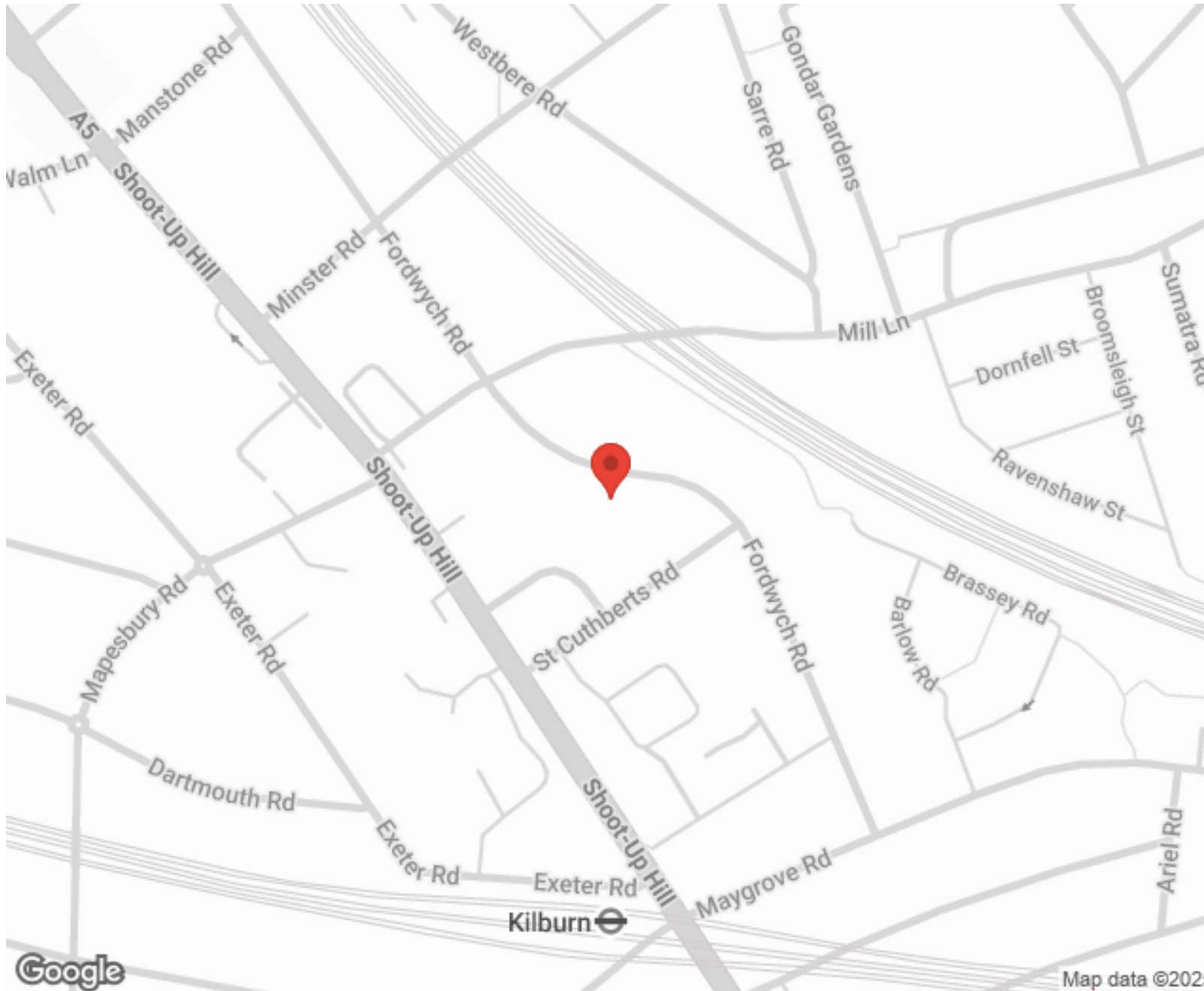
"I used Vita properties to find a flat recently and it was an overall professional, personalised and positive experience. Saira went the extra mile to accommodate to our needs and quick to help us whenever possible."



MORE INFO, PICTURES,
CONTACT ON
OUR WEBSITE



"Vita Properties is a very professional agency. My experience with them was incredible and the entire team was very helpful and kind throughout the renting process. I'd highly recommend!"



SCAN FOR MORE
GOOGLE REVIEWS




Google




4.9 Stars | 132 Reviews

Find us on social media

 vitaproperties

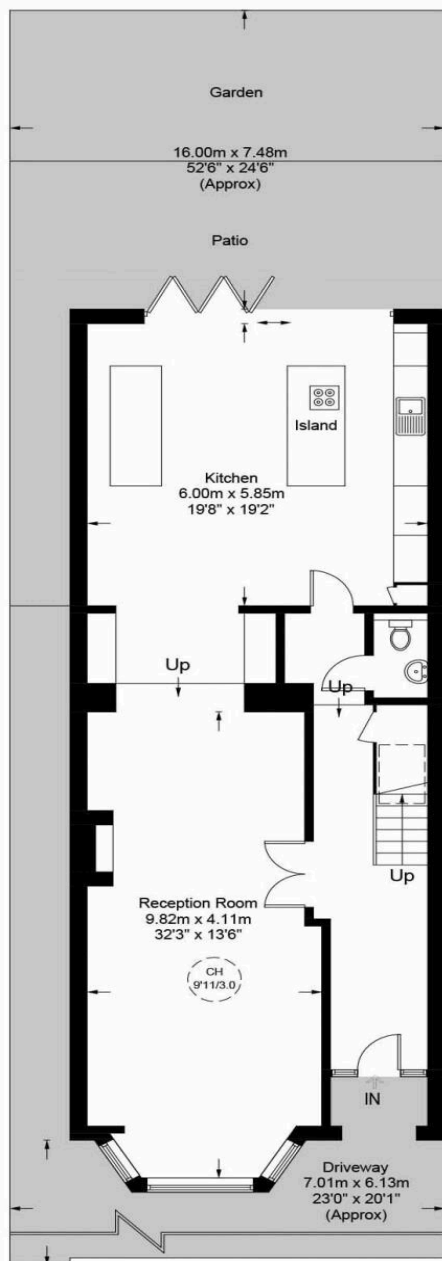
 VitaProperties

 VitaProperties

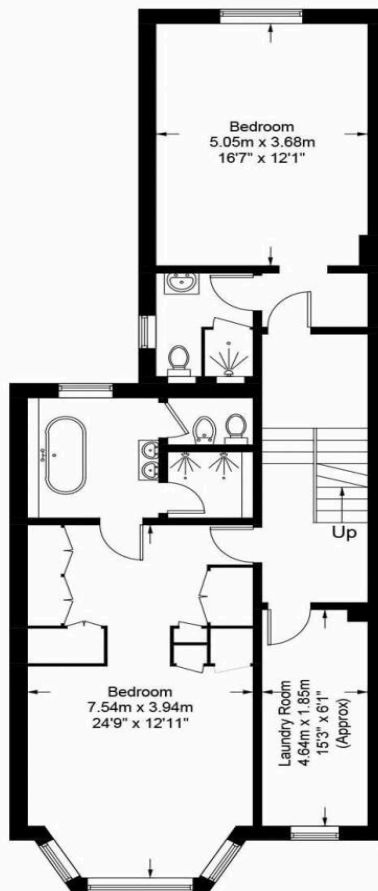


Fordwych Road, NW2

Approximate Gross Internal Area = 3047 sq ft / 283.1 sq m
(Including Eaves / Excluding Reduced Headroom)
Reduced Headroom = 156 sq ft / 14.5 sq m

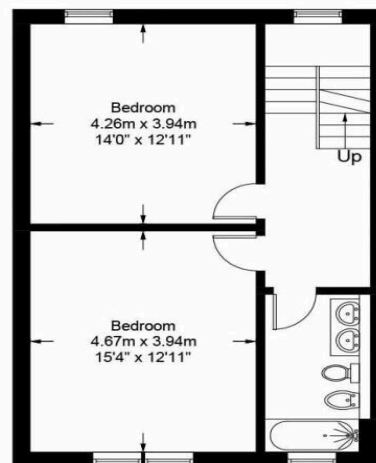


Ground Floor

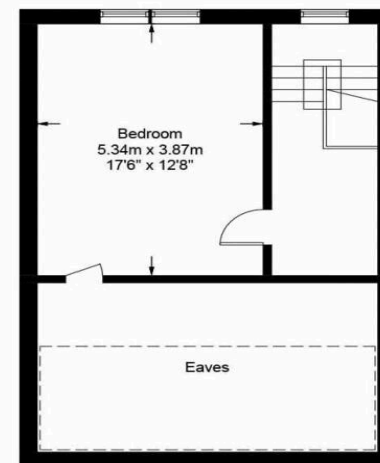


First Floor

= Reduced headroom below 1.5m / 5'0"



Second Floor



Third Floor



**Certified
Property
Measurer**

This plan is for layout guidance only. Not drawn to scale unless stated. Windows and door openings are approximate. Whilst every care is taken in the preparation of this plan, please check all dimensions, shapes and compass bearings before making any decisions reliant upon them. (ID994699)