



**VITA**  
*Properties*

Pember Road, Kensal Rise, London NW10 | £715,000

- Stunning two bedroom garden apartment
- Excellent open plan entertaining space
- Large patio garden
- Ground floor of an end of terrace period property

- Moments to all Kensal Rise amenities
- Walking distance to Notting Hill



"Vita Properties have been tremendously helpful throughout the process of securing/renting my flat. Informative about the property, prompt communication, easy to use dashboard for sharing of information, and pleasant to work with. Highly recommend!"

---

Kate Brookfield x Vita Properties present this beautifully bright and spacious two-bedroom garden apartment on Pember Road, Kensal Rise, NW10.

Designed for those who love stylish entertaining and convenience, this home boasts an incredible open-plan living space with exposed steels and bi-folding doors leading to a generous patio garden.

At the front of the apartment, you'll find two well-proportioned double bedrooms, both with high ceilings. The principal bedroom features a charming bay window and fitted wardrobes, while the second bedroom opens onto a private side courtyard via French doors. A beautifully designed shower room with a marble basin completes this section.

To the rear, the spacious open-plan living area is thoughtfully zoned and full of personality. A sleek, green handle less kitchen with a wide breakfast bar flows into the dining space, set beneath a stunning run of skylights. The remainder of the space allows for multiple seating arrangements, all with garden

The patio garden extends the living space seamlessly and even features a side entrance to Halstow Road for added practicality.

Find the content on Instagram @Kate\_the\_agent



Kate Brookfield

✉ Kate.brookfield@vitaproperties.uk  
☎ +4478 1365 5431



- 🏠 Flat
- 🔑 Leasehold
- 🛏 x 2
- 🛋 x 1
- 🚿 x 1

SCAN FOR  
A VIDEO  
WALKTHROUGH





views.

"I was very impressed with Vita and their network of buyers. When the sale of my flat fell through (twice) they worked extremely hard to find new buyers in a difficult market - thank you!"

---





"Working with Vita properties has been a smooth experience! No complaints at all. Our letting agent, Diana has been fantastic and very helpful throughout the whole process. I would highly recommend both Vita properties and Diana."

---





"I used Vita properties to find a flat recently and it was an overall professional, personalised and positive experience. Saira went the extra mile to accommodate to our needs and quick to help us whenever possible."

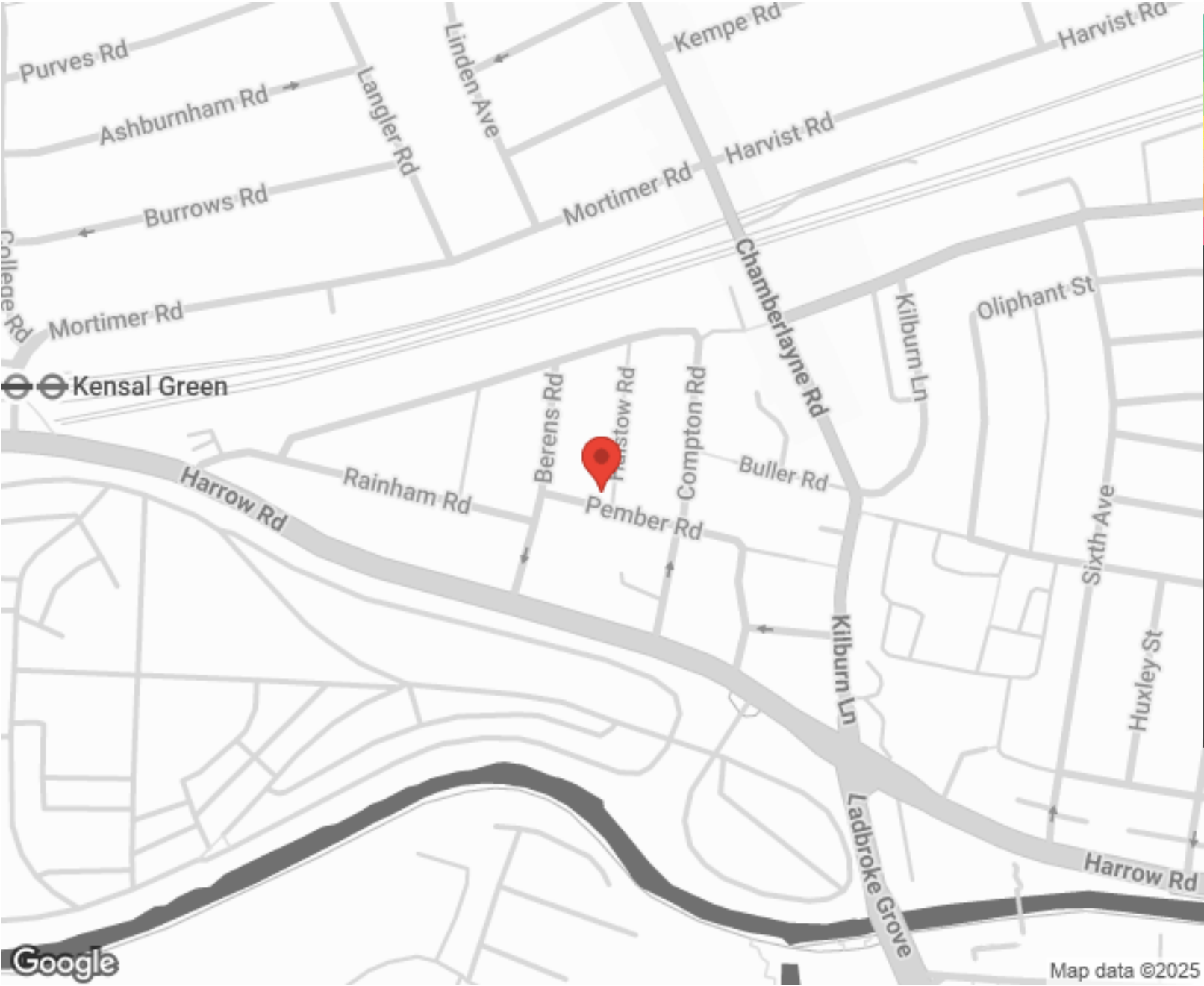
---



MORE INFO, PICTURES,  
CONTACT ON  
OUR WEBSITE



"Vita Properties is a very professional agency. My experience with them was incredible and the entire team was very helpful and kind throughout the renting process. I'd highly recommend!"



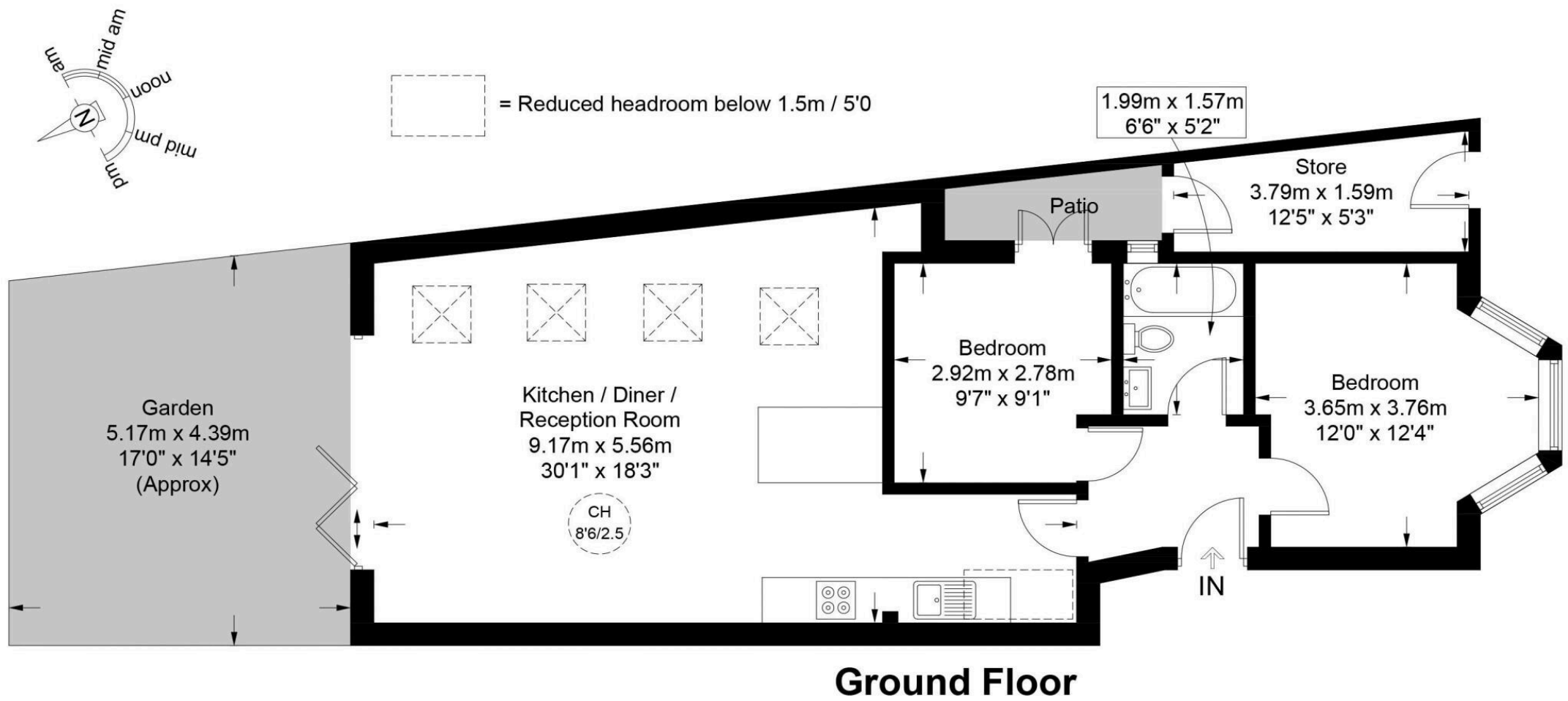
Score	Energy rating	Current	Potential
92+	A		
81-91	B		
69-80	C	70 C	76 C
55-68	D		
39-54	E		
21-38	F		
1-20	G		

SCAN FOR MORE  
GOOGLE REVIEWS

Google  
★★★★★  
4.9 Stars | 132 Reviews

Find us on social media

vitaproperties  
 VitaProperties  
 VitaProperties



This plan is for layout guidance only and is not drawn to scale unless stated. All dimensions, including windows, doors, and the Total Gross Internal Area (GIA), are approximate. For precise measurements, please consult a qualified architect or surveyor before making any decisions based on this plan.



**Certified  
Property  
Measurer**