



VITA
Properties

Crossfield Road, Belsize Park, London NW3 | £1,250,000

- East Facing 77ft Private Garden
- Sauna
- Character Features
- Summer House

- Heart of Belsize Park
- Own Entrance

"Vita Properties have been tremendously helpful throughout the process of securing/renting my flat. Informative about the property, prompt communication, easy to use dashboard for sharing of information, and pleasant to work with. Highly recommend!"

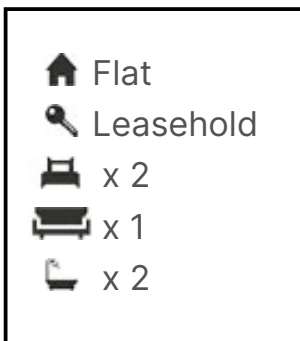
A meticulously refurbished 2/3-bedroom garden flat on Crossfield Road presents an exceptional standard of living in the heart of Belsize Park. Ideally situated near The Hall School, Belsize Village, England's Lane, and Swiss Cottage Station (Jubilee Line), this property seamlessly marries timeless period elegance with contemporary design.

Housed within an elegant period conversion, this garden flat has been thoughtfully upgraded to the highest standards. Upon entry, a spacious marble hallway welcomes you, featuring three custom-built, floor-to-ceiling storage units.

The first serves as a dedicated space for coats and shoes, the second houses a washer and separate dryer, and the third functions as a highly practical food pantry. The entrance hall includes a guest WC and additional under-stair storage for convenience.

The principal bedroom is generously proportioned, offering bespoke floor-to-ceiling wardrobes, sleek wooden flooring, and a tranquil ambiance.

The family bathroom is finished to a superior specification, showcasing dual sinks, a large bathtub, and a walk-in shower, combining luxury with functionality. A second spacious double bedroom overlooks the private garden, providing a serene retreat with elegant wooden flooring.



Oliver Kent

✉ oliver.kent@vitaproperties.uk
☎ +4477 7274 0351



"I was very impressed with Vita and their network of buyers. When the sale of my flat fell through (twice) they worked extremely hard to find new buyers in a difficult market - thank you!"



"Working with Vita properties has been a smooth experience! No complaints at all. Our letting agent, Diana has been fantastic and very helpful throughout the whole process. I would highly recommend both Vita properties and Diana."



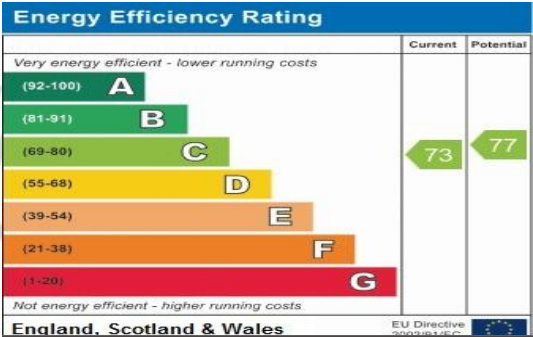
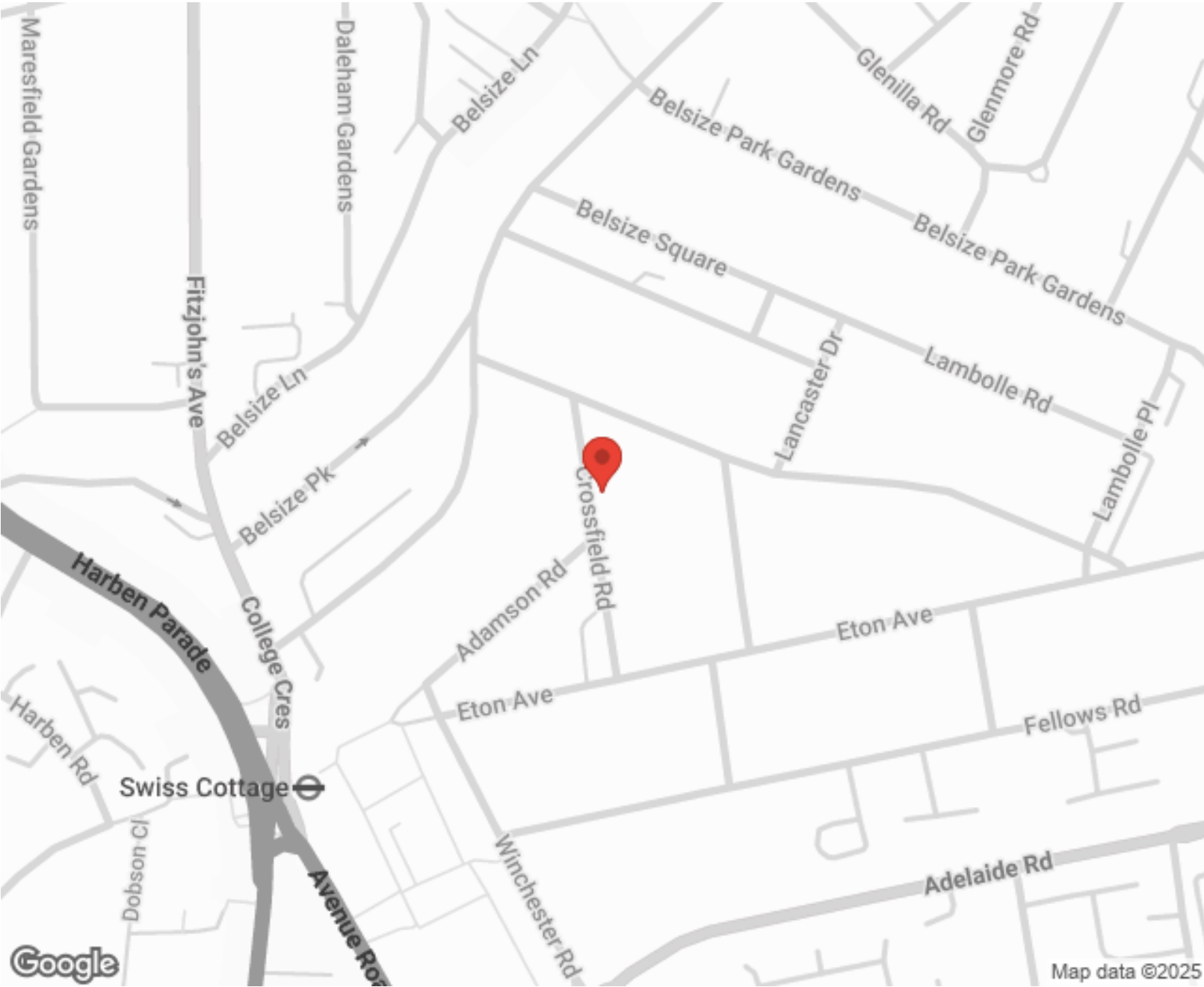
"I used Vita properties to find a flat recently and it was an overall professional, personalised and positive experience. Saira went the extra mile to accommodate to our needs and quick to help us whenever possible."



MORE INFO, PICTURES,
CONTACT ON
OUR WEBSITE



"Vita Properties is a very professional agency. My experience with them was incredible and the entire team was very helpful and kind throughout the renting process. I'd highly recommend!"



SCAN FOR MORE
GOOGLE REVIEWS



Google



4.9 Stars | 132 Reviews

Find us on social media



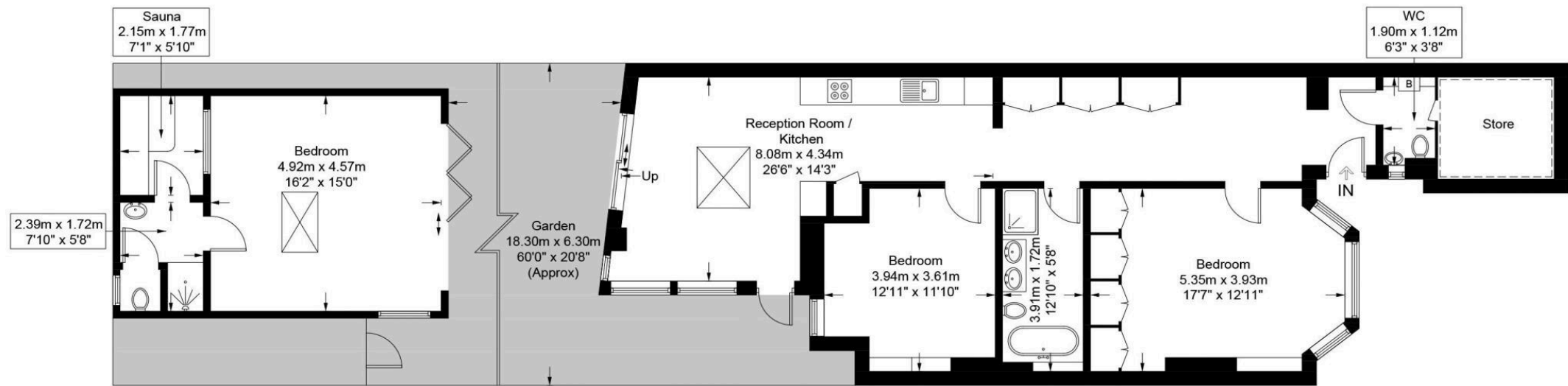
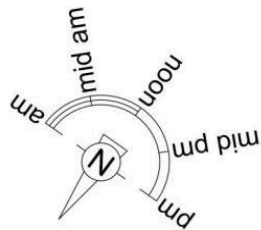
vitaproperties



VitaProperties



VitaProperties



Garden Level

This plan is for layout guidance only and is not drawn to scale unless stated. All dimensions, including windows, doors, and the Total Gross Internal Area (GIA), are approximate. For precise measurements, please consult a qualified architect or surveyor before making any decisions based on this plan.



Certified
Property
Measurer