



Sherriff Road, West Hampstead, London NW6 | £2,550,000

- Double Fronted
- Turn Key
- Large Garden with Acoustic Fencing
- Moments to Transport

- Seconds to the High Street
- Parks and Schools Close By

"Vita Properties have been tremendously helpful throughout the process of securing/renting my flat. Informative about the property, prompt communication, easy to use dashboard for sharing of information, and pleasant to work with. Highly recommend!"

This exceptional double-fronted period home (2,606 sq ft) has been fully renovated to an impeccable standard, offering a perfect blend of elegance, space, and modern convenience in one of West Hampstead's most desirable locations.

Spanning three well-planned floors, this home is designed for sophisticated family living and entertaining

Key Features:

Two Spacious Reception Rooms ? Ideal for both formal entertaining and relaxed family time.

Showstopping Open-Plan Kitchen & Living Area ? A beautifully designed space opening onto a private 41? x 37? garden

Four Generous Double Bedrooms Including a luxurious principal suite with a dressing room and en-suite shower room.

Four Stylish Bathrooms ? Three en-suites plus a separate family bathroom.

Located on Sherriff Road this home is just minutes from West Hampstead, South Hampstead, and Finchley Road stations, offering Underground and Overground links

Enjoy boutique shops, charming cafés, and top-rated restaurants just moments away. Green spaces and the popular West Hampstead Farmers' Market add to the vibrant local lifestyle.

This is a are opportunity to own a turnkey family home in a prestigious London neighborhood.



Jonathan Singer

✉ jonathan.singer@vitaproperties.uk
☎ +4478 8428 6414



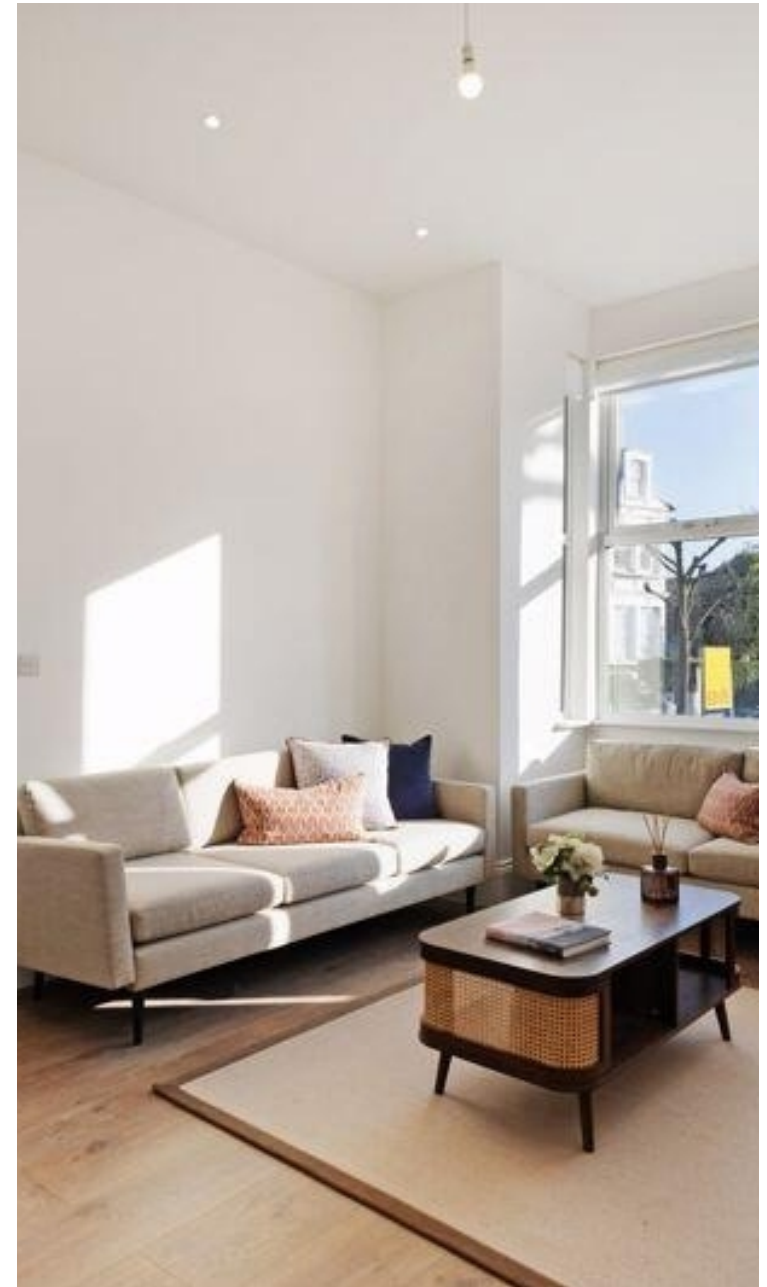
🏠	Semi-Detached
🔑	Freehold
🛏	x 4
🛋	x 3
🚿	x 4

SCAN FOR
A VIDEO
WALKTHROUGH



Utility Room & Cloakroom

"I was very impressed with Vita and their network of buyers. When the sale of my flat fell through (twice) they worked extremely hard to find new buyers in a difficult market - thank you!"



"Working with Vita properties has been a smooth experience! No complaints at all. Our letting agent, Diana has been fantastic and very helpful throughout the whole process. I would highly recommend both Vita properties and Diana."



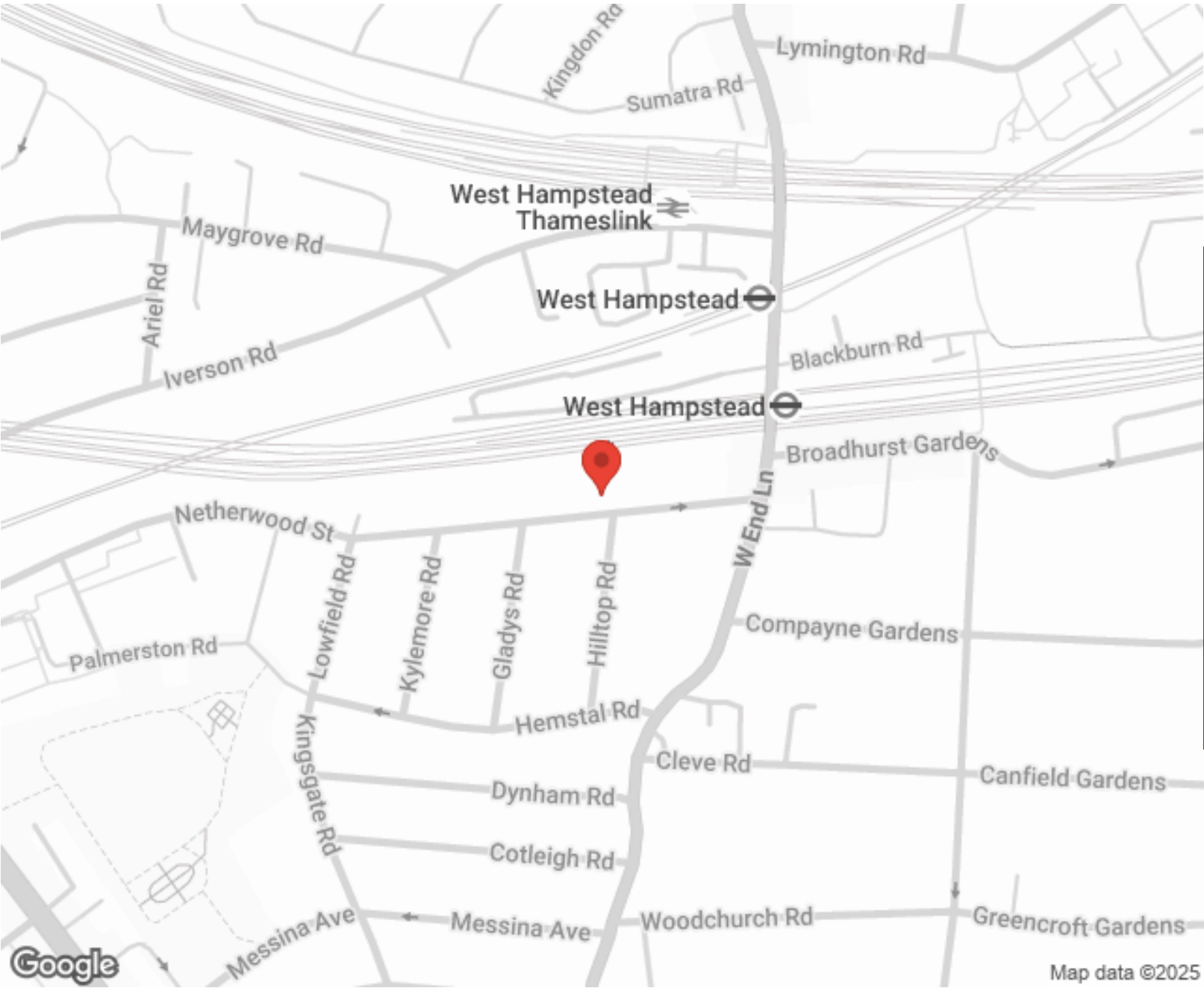
"I used Vita properties to find a flat recently and it was an overall professional, personalised and positive experience. Saira went the extra mile to accommodate to our needs and quick to help us whenever possible."



MORE INFO, PICTURES,
CONTACT ON
OUR WEBSITE



"Vita Properties is a very professional agency. My experience with them was incredible and the entire team was very helpful and kind throughout the renting process. I'd highly recommend!"



Score	Energy rating	Current	Potential
92+	A		
81-91	B		82 B
69-80	C	71 C	
55-68	D		
39-54	E		
21-38	F		
1-20	G		

SCAN FOR MORE
GOOGLE REVIEWS



Google



4.9 Stars | 132 Reviews

Find us on social media



vitaproperties

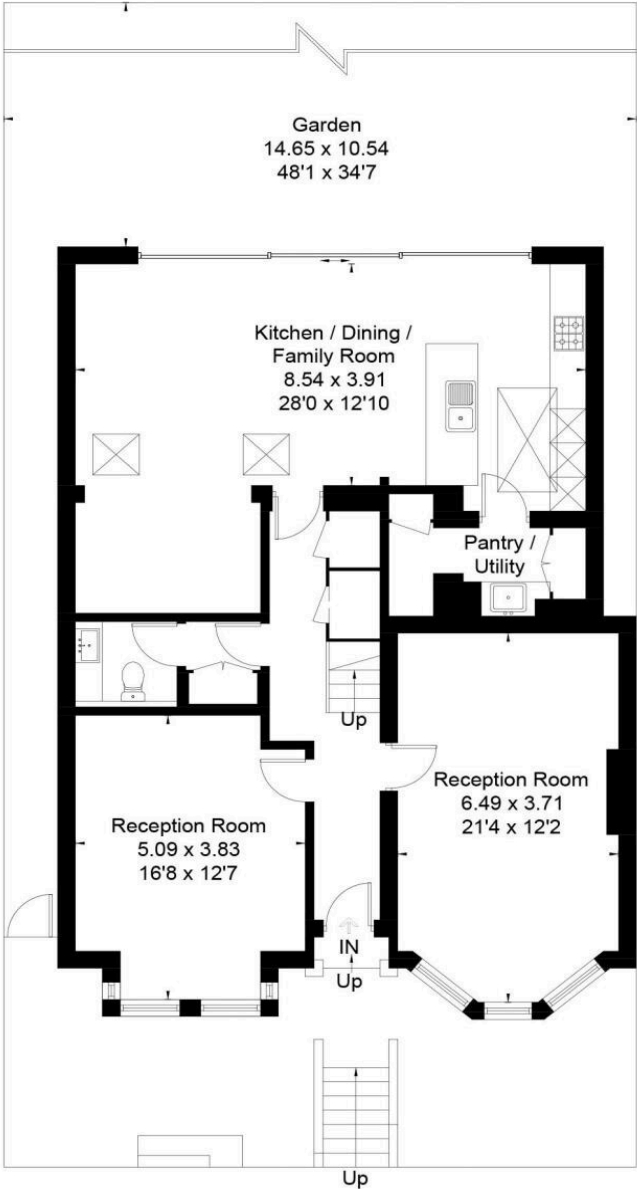
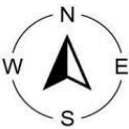


VitaProperties

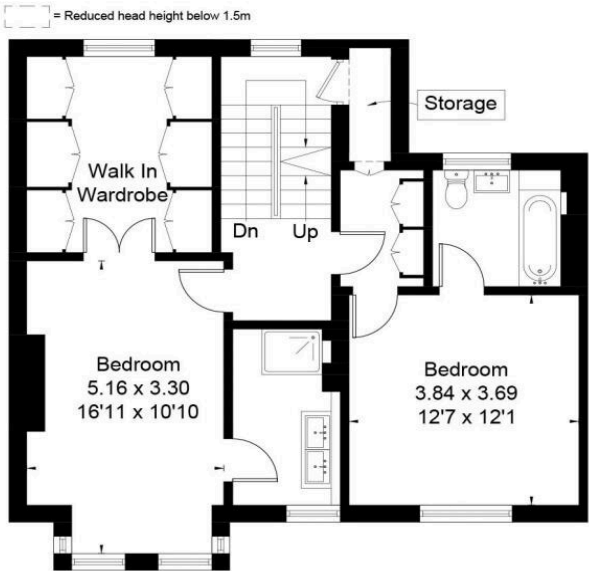


VitaProperties

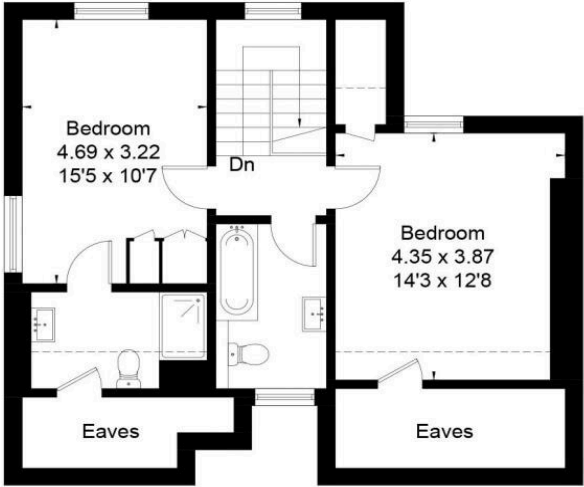
Approximate Floor Area = 242.1 sq m / 2606 sq ft



Ground Floor



First Floor



Second Floor



This floor plan has been drawn in accordance with RICS Property Measurement 2nd edition.
All measurements, including the floor area, are approximate and for illustrative purposes only. @fourwalls-group.com #86037