



**VITA**  
*Properties*

Ellesmere Road, London, Greater London, NW10 | £1,200,000

- Fully extended family home - 1908 sq ft
- 5 bedrooms, 3 bathrooms
- Off street parking
- Semi detached

- Moments to Gladstone Park
- Moments from Dollis Hill Tube (Jubilee Line)

"Vita Properties have been tremendously helpful throughout the process of securing/renting my flat. Informative about the property, prompt communication, easy to use dashboard for sharing of information, and pleasant to work with. Highly recommend!"

---

Kate Brookfield x Vita Properties present this beautiful fully extended semi detached family home, on Ellesmere Road NW10.

A charming example of the 1930s homes found in this friendly pocket of Dollis Hill, just moments from Gladstone Park. This beautifully extended home underwent a stunning rear extension and loft conversion in 2023, creating an ideal space for a young family seeking both style and functionality. The property further benefits from a private driveway and side access to a rear garden.

A neat porch provides space for muddy boots before stepping into a wide and welcoming hallway, where decorative floor tiles lead the eye straight through to the garden. At the front of the home, a generous living room with a bay window and high ceilings offers a cozy yet spacious retreat. Opposite, a stylish full shower room and guest WC, enhance the ground floor's versatility, making it possible to create a ground-floor bedroom if needed.

The true heart of this home is the incredible open-plan kitchen, dining, and living space within the rear extension. A pitched roof with four skylights, full-width bi-folding doors, and a striking gable window flood the space with natural light, setting this home apart from others in the area.

The kitchen features a large island with bar seating and an array of luxury appliances, including an induction hob with a recirculating fan, a Fisher & Paykel double-drawer dishwasher, a wine fridge, a double fridge/freezer, a stainless steel butler sink with a copper finish, a filtered hot water tap, waste disposal, an integrated oven, and a combination microwave/oven with a warming drawer.

-  Semi-Detached
-  Freehold
-  x 5
-  x 2
-  x 3



Oliver Kent

 [oliver.kent@vitaproperties.uk](mailto:oliver.kent@vitaproperties.uk)  
 +4477 7274 0351





"I was very impressed with Vita and their network of buyers. When the sale of my flat fell through (twice) they worked extremely hard to find new buyers in a difficult market - thank you!"

---



"Working with Vita properties has been a smooth experience! No complaints at all. Our letting agent, Diana has been fantastic and very helpful throughout the whole process. I would highly recommend both Vita properties and Diana."

---





"I used Vita properties to find a flat recently and it was an overall professional, personalised and positive experience. Saira went the extra mile to accommodate to our needs and quick to help us whenever possible."

---

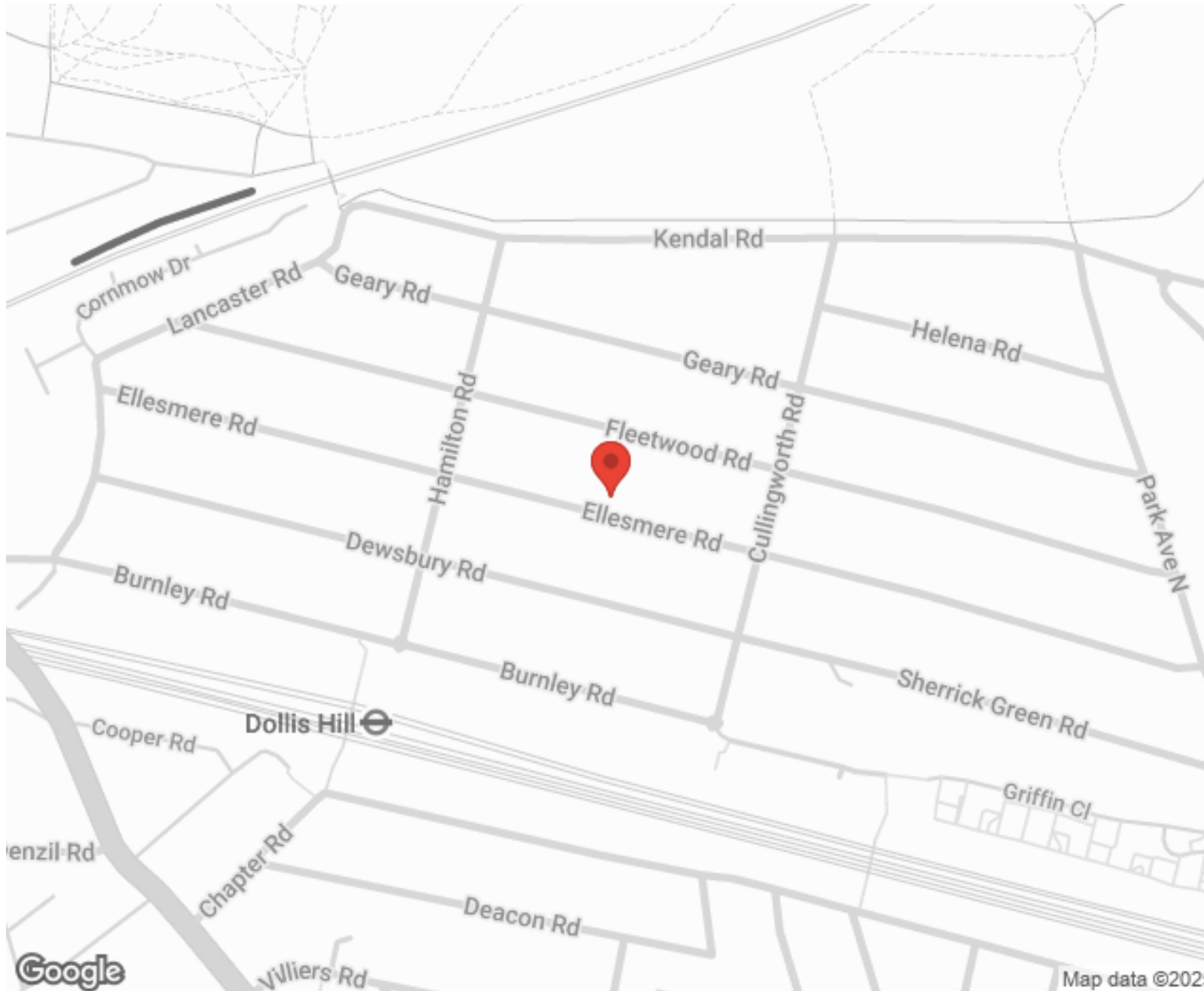


**MORE INFO, PICTURES,  
CONTACT ON  
OUR WEBSITE**



"Vita Properties is a very professional agency. My experience with them was incredible and the entire team was very helpful and kind throughout the renting process. I'd highly recommend!"

---



SCAN FOR MORE  
GOOGLE REVIEWS



Google



4.9 Stars | 132 Reviews

Find us on social media

 vitaproperties

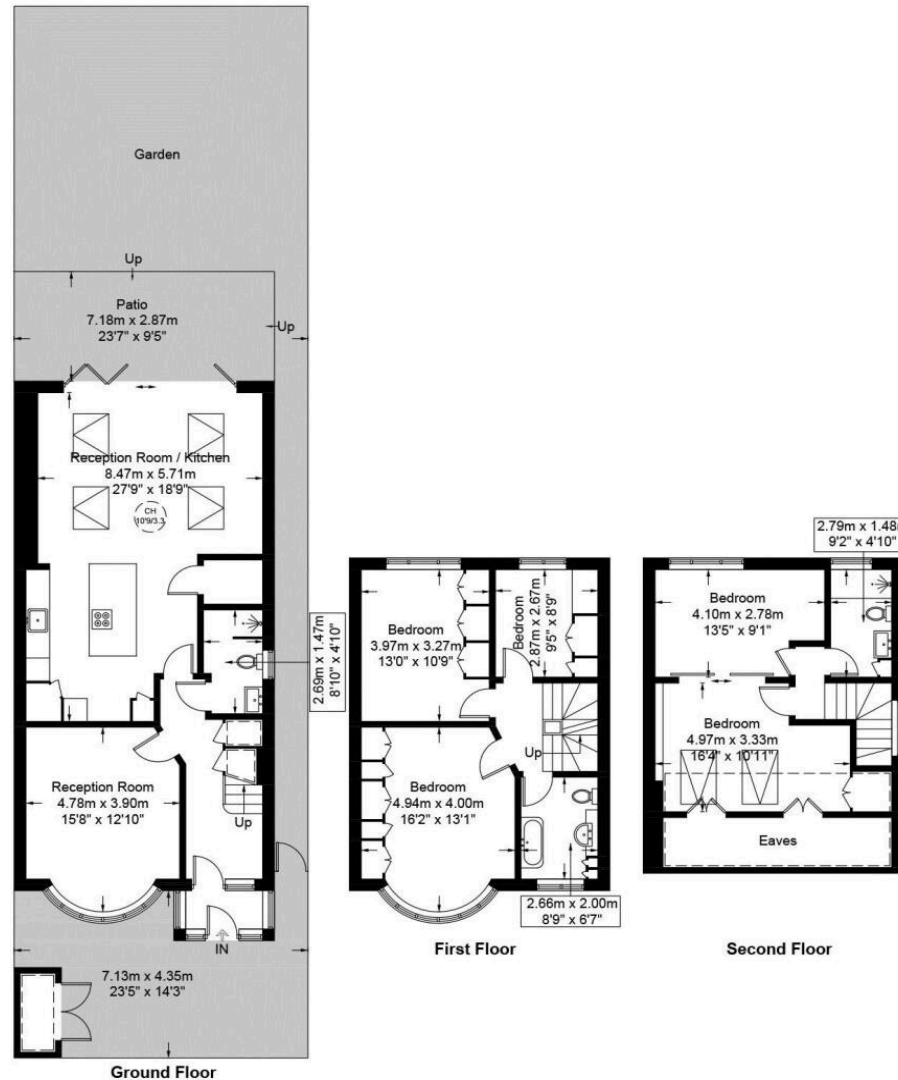
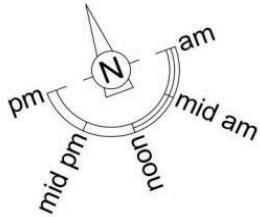
 VitaProperties

 VitaProperties

# Ellesmere Road, NW10

Approximate Gross Internal Area = 1908 sq ft / 177.3 sq m

Restricted Height = 170 sq ft / 15.8 sq m



This plan is for layout guidance only and is not drawn to scale unless stated. All dimensions, including windows, doors, and the Total Gross Internal Area (GIA), are approximate. For precise measurements, please consult a qualified architect or surveyor before making any decisions based on this plan.



**Certified  
Property  
Measurer**