



Fifth Avenue, Queens Park, London W10 | £1,150,000

- Stunning mid terrace period house
- Highly desirable Queens Park Estate
- Grade II listed property
- Three bedrooms, two bathrooms

- West facing garden
- Chain free

"Vita Properties have been tremendously helpful throughout the process of securing/renting my flat. Informative about the property, prompt communication, easy to use dashboard for sharing of information, and pleasant to work with. Highly recommend!"

Kate Brookfield x Vita Properties are proud to present this exceptional three-bedroom cottage, situated in the highly sought-after Queen's Park Estate, W10.

Located on the desirable Fifth Avenue, this home is one of the rare wider-format properties on the street. The avenue itself recently gained Grade II listed status, underscoring the architectural significance and historical value of these unique Victorian houses.

Spanning three floors and presented in immaculate condition, the house offers generously proportioned living spaces. The ground floor features an elegant double reception room with bespoke cabinetry and a wood-burning stove, flowing seamlessly into a stunning kitchen/dining area. The kitchen boasts multiple skylights and direct access to a west facing garden through two setoff French doors, creating a bright and welcoming atmosphere.

The first floor comprises two spacious double bedrooms with extensive fitted storage, alongside two beautifully finished bathrooms.

age.

This charming home retains original period features, including the distinctive wrought ironwork and a rare, original front door knocker—designed specifically for these properties when they were built circa 1880 by renowned architects Austin and Roland Plumbe.

- 🏠 House
- 🔑 Freehold
- 🛏 x 3
- 🛏 x 2
- 🚿 x 2



Kate Brookfield

✉ Kate.brookfield@vitaproperties.uk
☎ +4478 1365 5431



The loft has been thoughtfully converted to create a third bedroom. I was very impressed with Vita and their network of buyers. When the sale of my flat fell through (twice) they worked extremely hard to find new buyers in a difficult market - thank you!"



"Working with Vita properties has been a smooth experience! No complaints at all. Our letting agent, Diana has been fantastic and very helpful throughout the whole process. I would highly recommend both Vita properties and Diana."



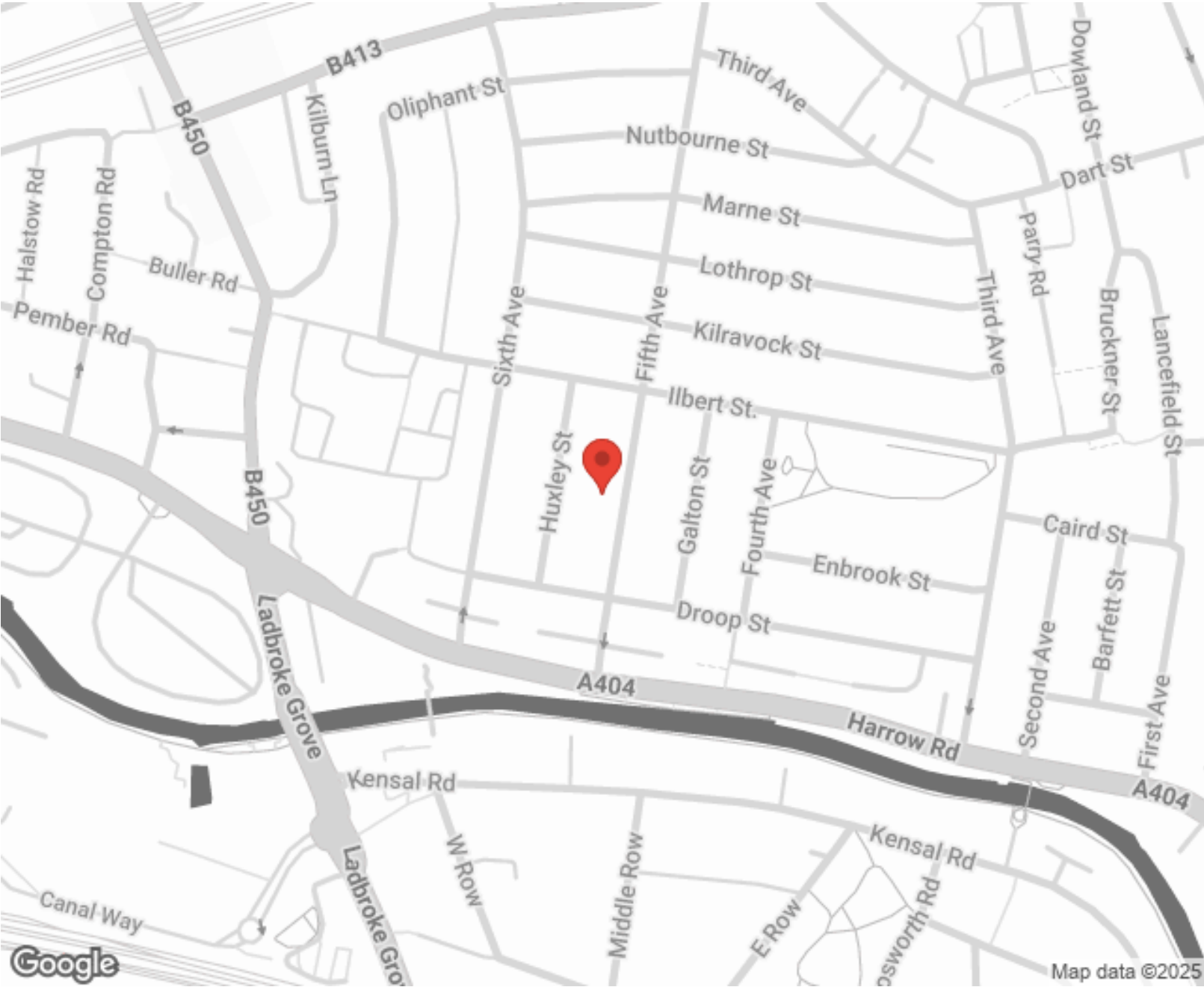
"I used Vita properties to find a flat recently and it was an overall professional, personalised and positive experience. Saira went the extra mile to accommodate to our needs and quick to help us whenever possible."



MORE INFO, PICTURES,
CONTACT ON
OUR WEBSITE



"Vita Properties is a very professional agency. My experience with them was incredible and the entire team was very helpful and kind throughout the renting process. I'd highly recommend!"



Score	Energy rating	Current	Potential
92+	A		
81-91	B		81 B
69-80	C		
55-68	D	59 D	
39-54	E		
21-38	F		
1-20	G		

SCAN FOR MORE
GOOGLE REVIEWS

Google
★★★★★
4.9 Stars | 132 Reviews

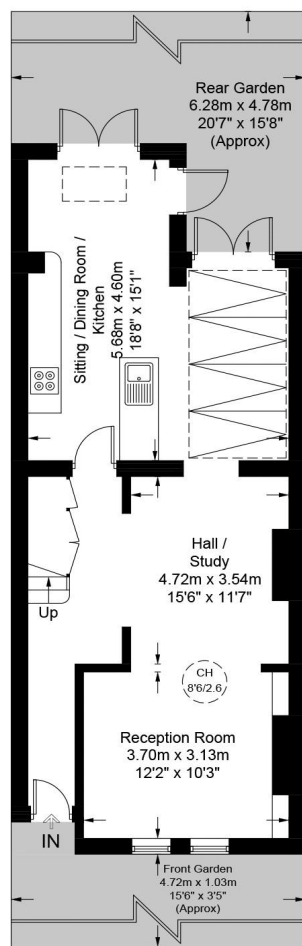
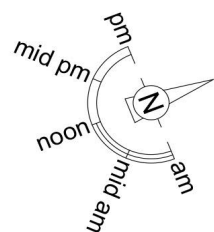
Find us on social media

vitaproperties
 VitaProperties
 VitaProperties

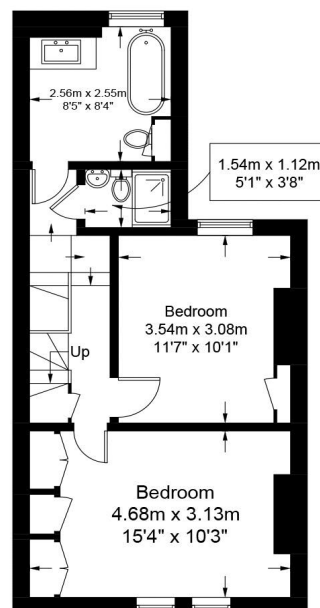
Fifth Avenue, W10

Approximate Gross Internal Area = 1355 sq ft / 125.9 sq m

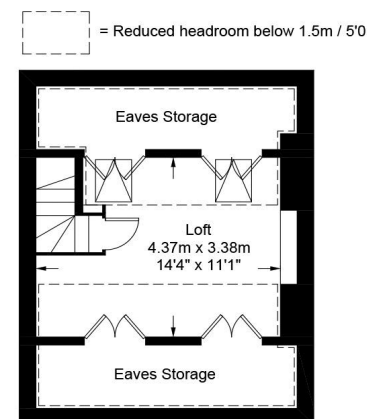
Restricted Height = 20.0 sq ft / 215 sq m



Ground Floor



First Floor



Second Floor

This plan is for layout guidance only and is not drawn to scale unless stated. All dimensions, including windows, doors, and the Total Gross Internal Area (GIA), are approximate. For precise measurements, please consult a qualified architect or surveyor before making any decisions based on this plan.



**Certified
Property
Measurer**