



Goldney Road, Maida Vale, London W9 .| £1,600,000

- Rare offering in prime Maida Vale W9
- Penthouse with private elevator
- Incredible wrap around terrace
- Generous open plan living space

- Smart home technology
- Beautifully presented

"Vita Properties have been tremendously helpful throughout the process of securing/renting my flat. Informative about the property, prompt communication, easy to use dashboard for sharing of information, and pleasant to work with. Highly recommend!"

Kate Brookfield x Vita Properties proudly present this exceptional two-bedroom penthouse apartment on Goldney Road, W9—a rare offering in one of West London's most desirable neighbourhoods.

Boasting over 1,600 sq ft of refined living space, this luxurious home is truly one of a kind. The standout feature is an expansive wraparound terrace offering stunning rooftop views, perfect for entertaining or relaxing in privacy. A private elevator opens directly into the apartment, adding an exclusive touch to everyday living.

Inside, the home is thoughtfully designed to highlight the generous open-plan living and dining area, framed by multiple sliding doors that seamlessly connect the indoors to the terrace. The principal bedroom suite includes dual dressing areas and a luxurious en suite bathroom, while the second bedroom also benefits from its own en suite facilities.

This penthouse combines space, style, and sophistication in a prime Maida Vale location.

🏠 Flat
🔑 Leasehold
🛏 x 2
🚿 x 1
🚶 x 2

SCAN FOR
A VIDEO
WALKTHROUGH

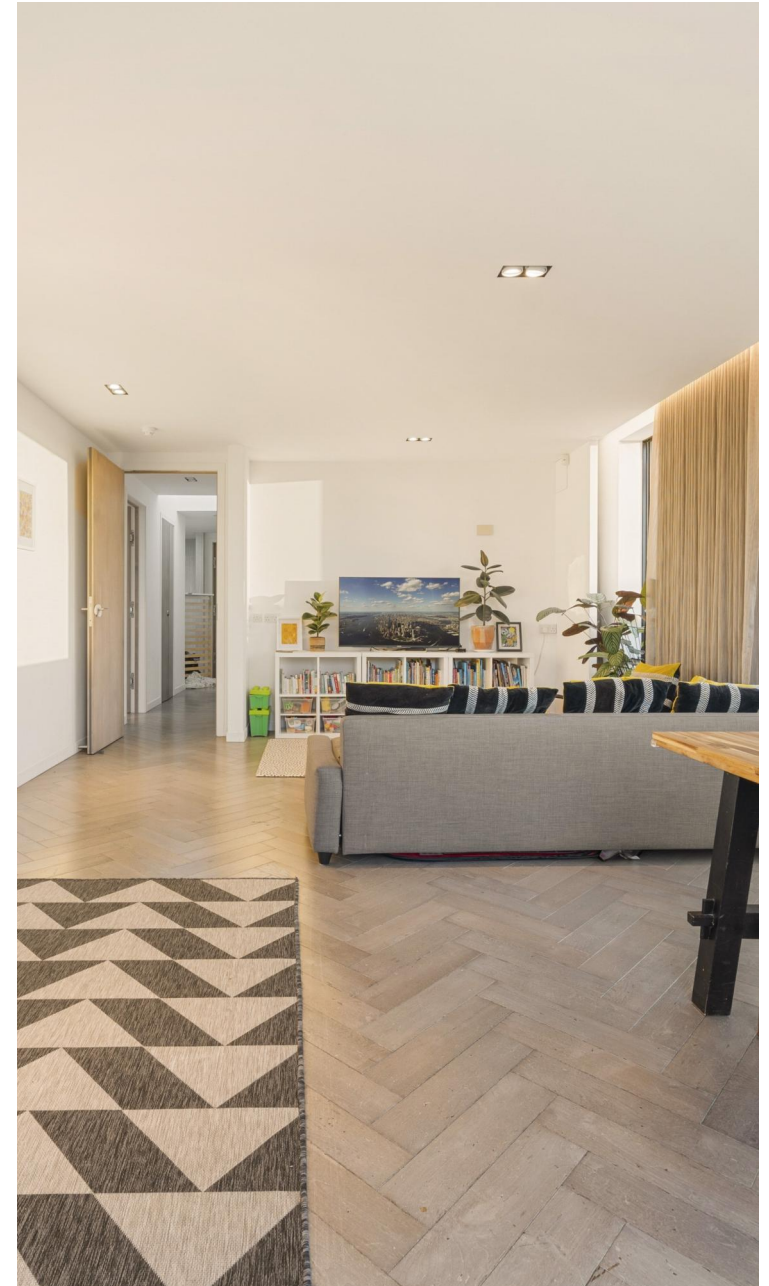


Kate Brookfield

✉ Kate.brookfield@vitaproperties.uk
☎ +4478 1365 5431



"I was very impressed with Vita and their network of buyers. When the sale of my flat fell through (twice) they worked extremely hard to find new buyers in a difficult market - thank you!"



"Working with Vita properties has been a smooth experience! No complaints at all. Our letting agent, Diana has been fantastic and very helpful throughout the whole process. I would highly recommend both Vita properties and Diana."



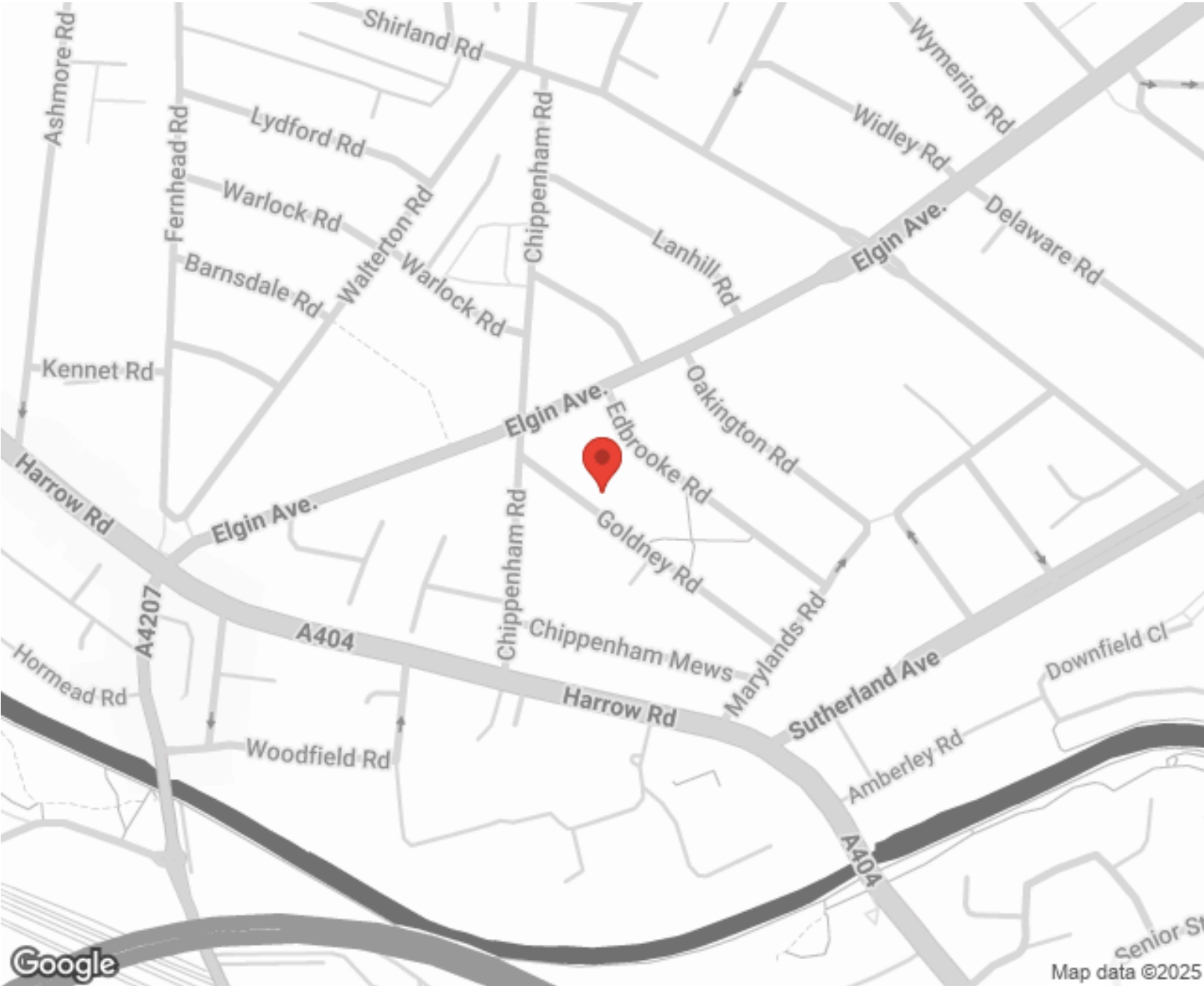
"I used Vita properties to find a flat recently and it was an overall professional, personalised and positive experience. Saira went the extra mile to accommodate to our needs and quick to help us whenever possible."



MORE INFO, PICTURES,
CONTACT ON
OUR WEBSITE



"Vita Properties is a very professional agency. My experience with them was incredible and the entire team was very helpful and kind throughout the renting process. I'd highly recommend!"



Score	Energy rating	Current	Potential
Energy efficiency chart			
81-91	B	86 B	86 B
69-80	C		
55-68	D		
39-54	E		
21-38	F		
1-20	G		

SCAN FOR MORE
GOOGLE REVIEWS



Google



4.9 Stars | 132 Reviews

Find us on social media



vitaproperties



VitaProperties




VitaProperties

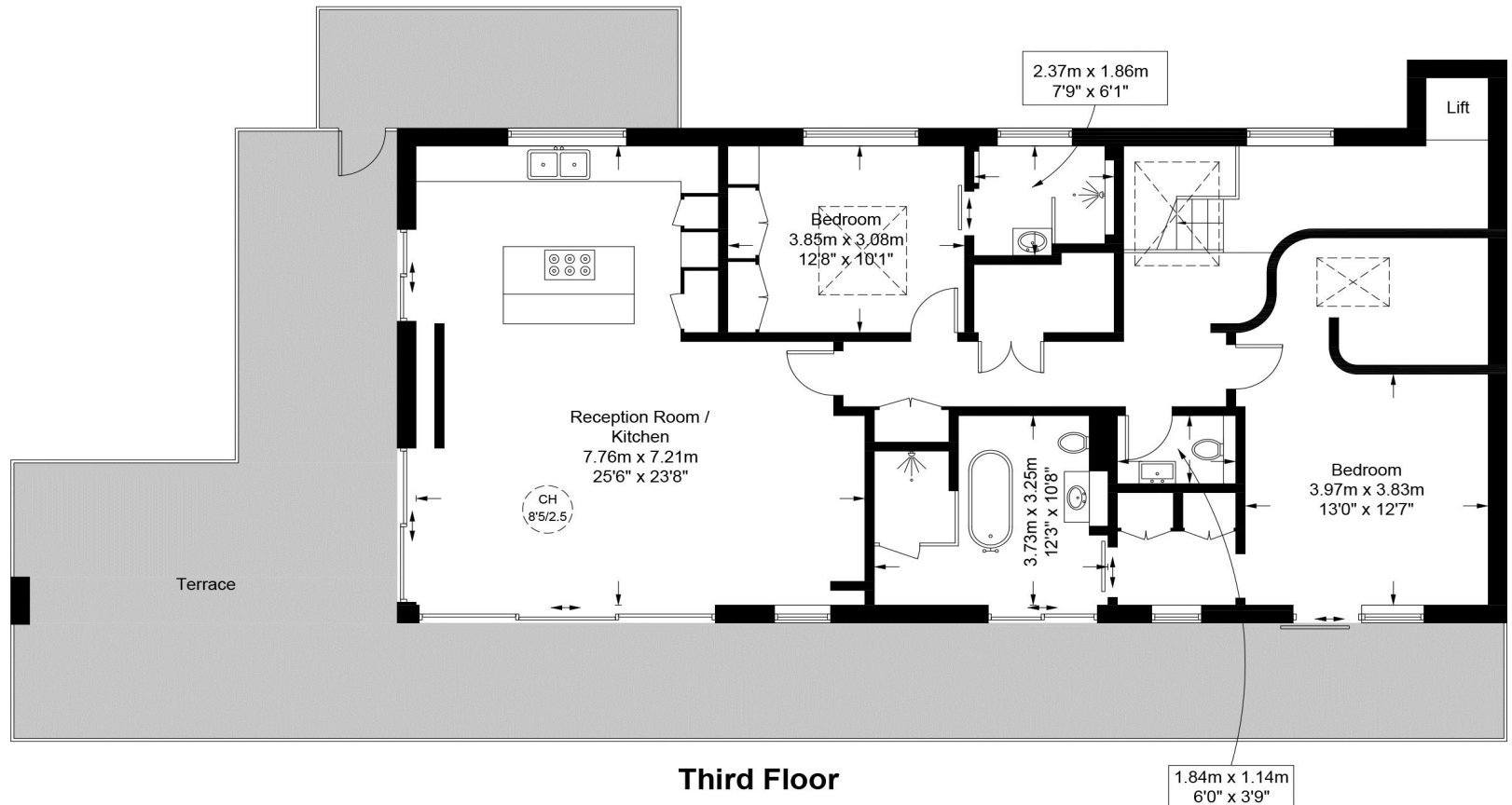
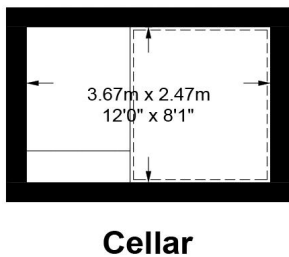
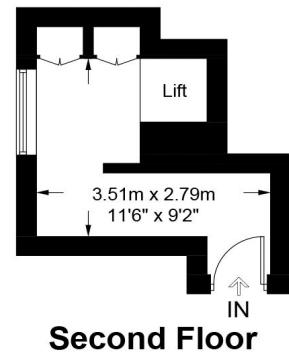
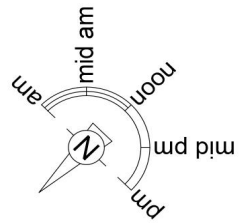
Goldney Road, W9

Approximate Gross Internal Area = 1665 sq ft / 154.7 sq m

Restricted Height = 54 sq ft / 5.0 sq m

Cellar = 96 sq ft / 8.9 sq m

 = Reduced headroom below 1.5m / 5'0"



This plan is for layout guidance only and is not drawn to scale unless stated. All dimensions, including windows, doors, and the Total Gross Internal Area (GIA), are approximate. For precise measurements, please consult a qualified architect or surveyor before making any decisions based on this plan.



**Certified
Property
Measurer**