



Kings Road, Willesden, London NW10 . | £500,000

- Spacious two bedroom apartment
- Handsome period building
- High ceilings and period details
- Moments to amenities
- Sought after road
- Chain free

"Vita Properties have been tremendously helpful throughout the process of securing/renting my flat. Informative about the property, prompt communication, easy to use dashboard for sharing of information, and pleasant to work with. Highly recommend!"

A spacious and light two bedroom apartment in Willesden Green, NW2.

Occupying the first floor of a handsome period building on Kings Road, you're never far from amenities and local transport links, not to mention being on a lone of the area's most sought after roads.

Boasting high ceilings throughout, the highlight is the generous living space with period features and the west facing aspect fills the space with natural light. Further throughout, two large double bedrooms, separate kitchen and a full bathroom.

This is the ideal home for those who like to entertain whilst staying close to local conveniences, with quick transport links to central London.

Find the contact on instagram @shayla_the_agent



Kate Brookfield

✉ Kate.brookfield@vitaproperties.uk
☎ +4478 1365 5431



"I was very impressed with Vita and their network of buyers. When the sale of my flat fell through (twice) they worked extremely hard to find new buyers in a difficult market - thank you!"



"Working with Vita properties has been a smooth experience! No complaints at all. Our letting agent, Diana has been fantastic and very helpful throughout the whole process. I would highly recommend both Vita properties and Diana."



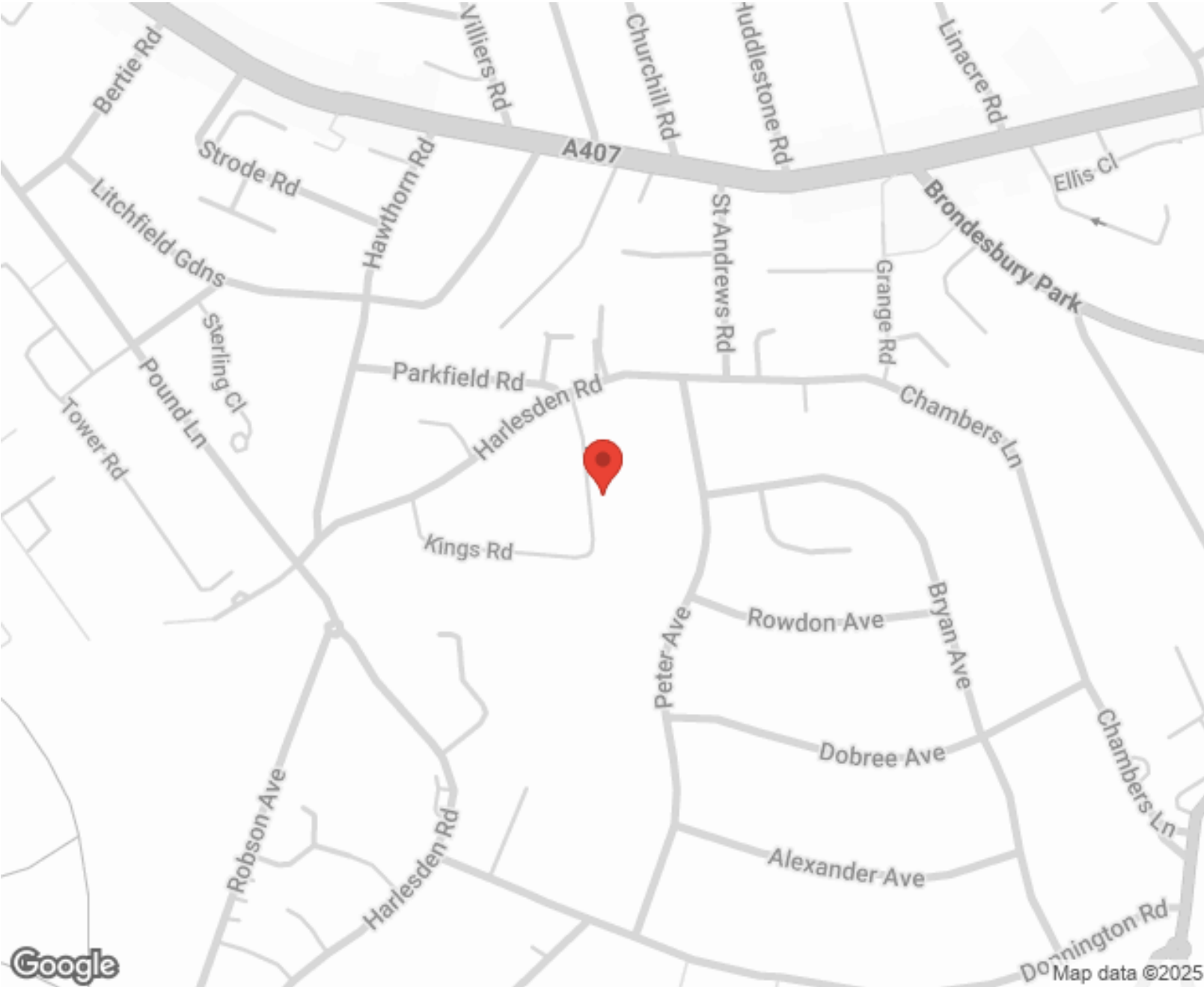
"I used Vita properties to find a flat recently and it was an overall professional, personalised and positive experience. Saira went the extra mile to accommodate to our needs and quick to help us whenever possible."



MORE INFO, PICTURES,
CONTACT ON
OUR WEBSITE



"Vita Properties is a very professional agency. My experience with them was incredible and the entire team was very helpful and kind throughout the renting process. I'd highly recommend!"



Score	Energy rating	Current	Potential
92+	A		
81-91	B		
69-80	C	70 C	78 C
55-68	D		
39-54	E		
21-38	F		
1-20	G		

SCAN FOR MORE
GOOGLE REVIEWS

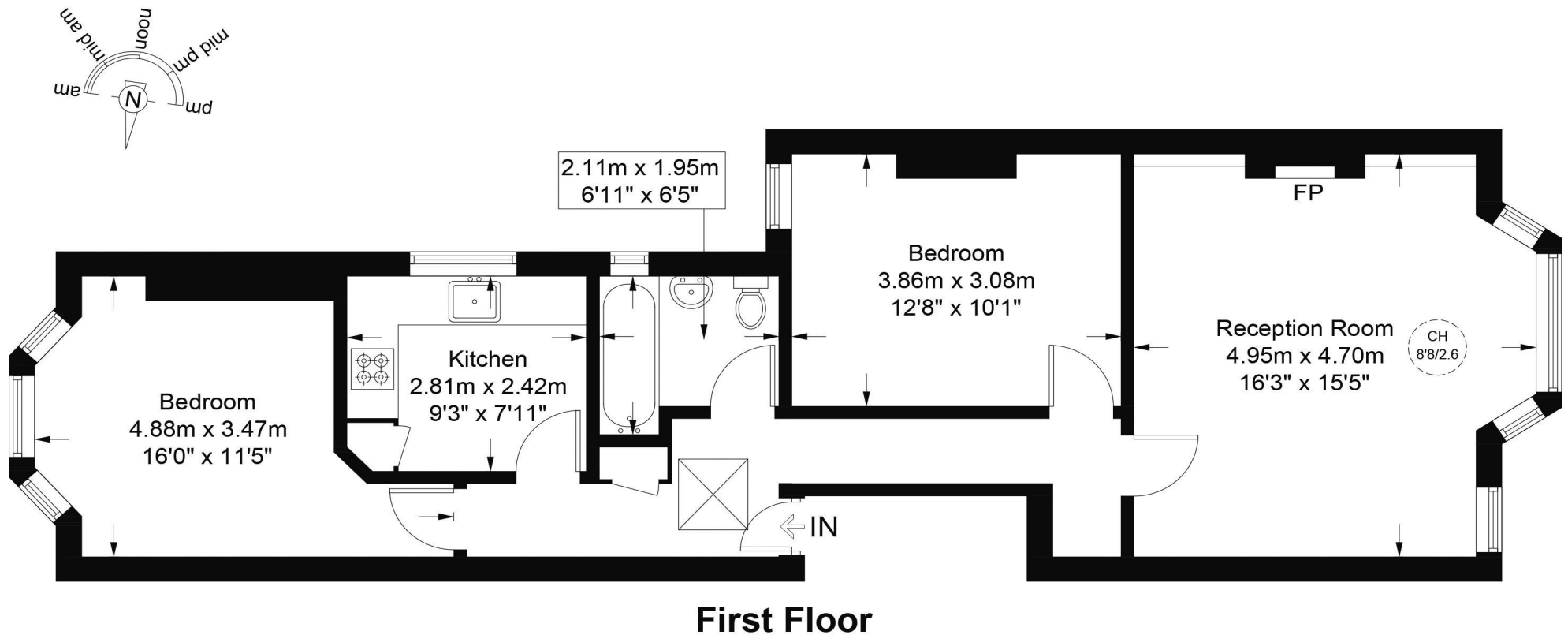
Google
★★★★★
4.9 Stars | 132 Reviews

Find us on social media

vitaproperties
 VitaProperties
 VitaProperties

Kings Road, NW10

Approximate Gross Internal Area = 732 sq ft / 68.0 sq m



This plan is for layout guidance only and is not drawn to scale unless stated. All dimensions, including windows, doors, and the Total Gross Internal Area (GIA), are approximate. For precise measurements, please consult a qualified architect or surveyor before making any decisions based on this plan.



**Certified
Property
Measurer**