



Ariel Road, West Hampstead, London NW6 .| £450,000

- Smart one bedroom apartment
- Private courtyard garden
- Moments to West Hampstead transport and amenities
- High ceilings and excellent natural light

- Share of freehold
- Chain free

"Vita Properties have been tremendously helpful throughout the process of securing/renting my flat. Informative about the property, prompt communication, easy to use dashboard for sharing of information, and pleasant to work with. Highly recommend!"

Kate Brookfield x Vita Properties present this charming one bedroom garden apartment in West Hampstead, NW6.

This delightful one bedroom garden flat offers a perfect blend of comfort, space, and natural light. Offered as a share of freehold, this smart property boasts high ceilings, spacious rooms and private courtyard garden accessed via the kitchen.

Perfectly positioned to take full advantage of everything West Hampstead has to offer. A few moments walk to West Hampstead Thameslink and moments to the Jubilee and overground service. This really is a fantastic option for those needing ultimate convenience within one of London's most popular neighbourhoods.


Find the content on instagram @shayla_the_agent




Kate Brookfield

✉ Kate.brookfield@vitaproperties.uk
☎ +4478 1365 5431







Flat




Share of Freehold



x 1



x 1



x 1



"I was very impressed with Vita and their network of buyers. When the sale of my flat fell through (twice) they worked extremely hard to find new buyers in a difficult market - thank you!"



"Working with Vita properties has been a smooth experience! No complaints at all. Our letting agent, Diana has been fantastic and very helpful throughout the whole process. I would highly recommend both Vita properties and Diana."



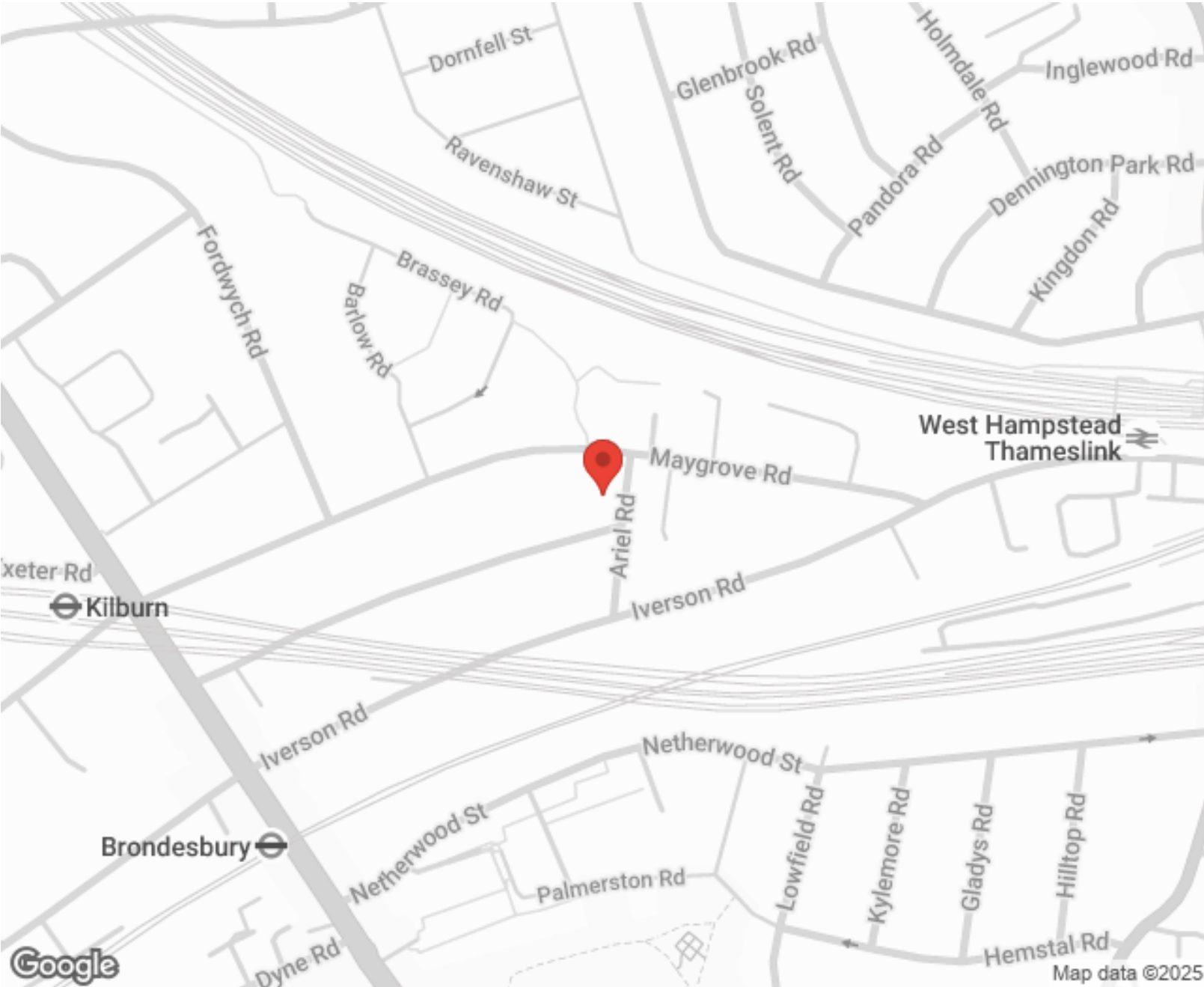
"I used Vita properties to find a flat recently and it was an overall professional, personalised and positive experience. Saira went the extra mile to accommodate to our needs and quick to help us whenever possible."



MORE INFO, PICTURES,
CONTACT ON
OUR WEBSITE



"Vita Properties is a very professional agency. My experience with them was incredible and the entire team was very helpful and kind throughout the renting process. I'd highly recommend!"



Score	Energy rating	Current	Potential
Energy efficiency chart			
81-91	B		
69-80	C		75 C
55-68	D	67 D	
39-54	E		
21-38	F		
1-20	G		

SCAN FOR MORE
GOOGLE REVIEWS




Google



4.9 Stars | 132 Reviews

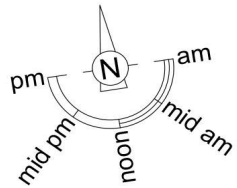
Find us on social media


-  vitaproperties
-  VitaProperties
-  VitaProperties

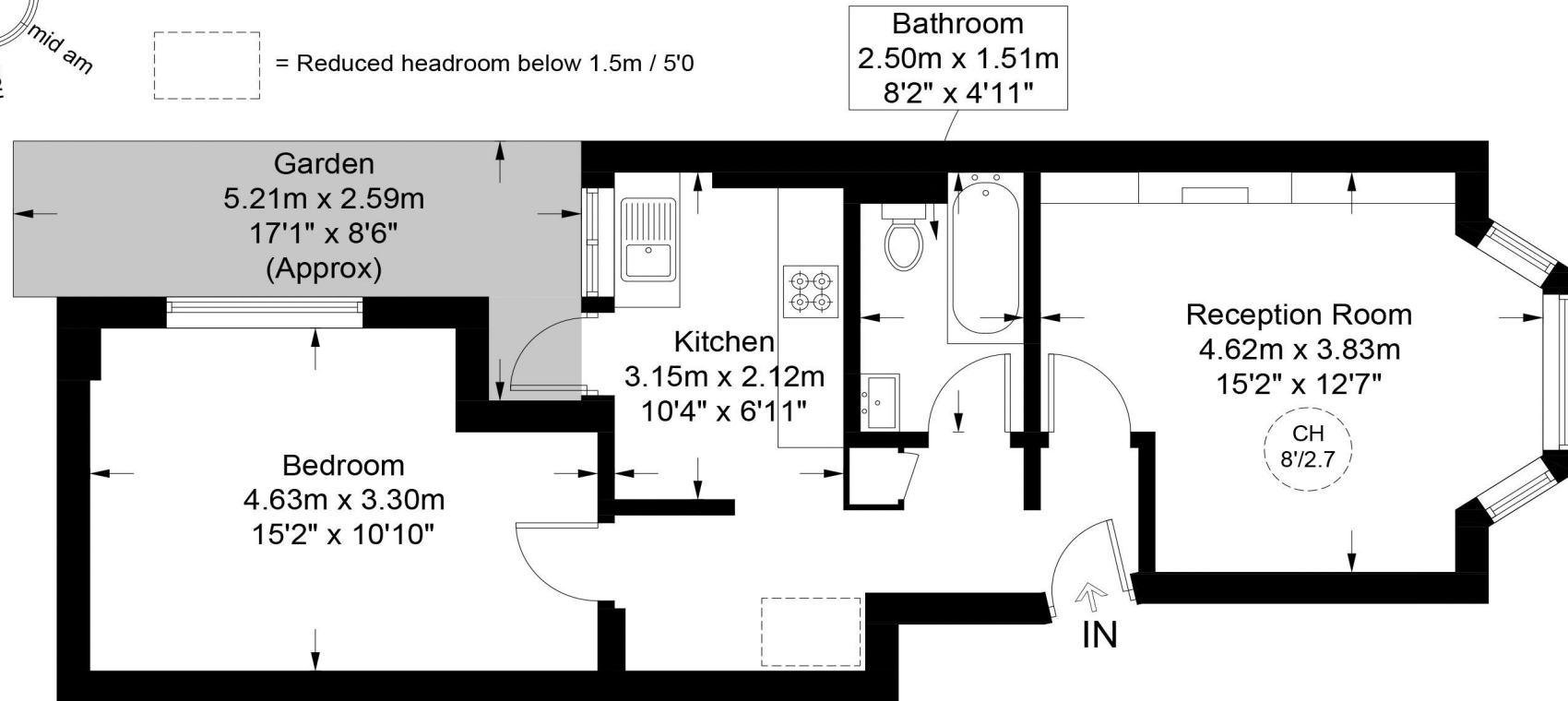
Ariel Road, NW6

Approximate Gross Internal Area = 523 sq ft / 48.6 sq m

Restricted Height = 7 sq ft / 0.7 sq m



 = Reduced headroom below 1.5m / 5'0



Ground Floor

This plan is for layout guidance only and is not drawn to scale unless stated. All dimensions, including windows, doors, and the Total Gross Internal Area (GIA), are approximate. For precise measurements, please consult a qualified architect or surveyor before making any decisions based on this plan.



**Certified
Property
Measurer**