



Athena Court, St Johns Wood, London, NW8 | £8,000

- Brand Newly Renovated
- Seconds to Tube
- Impecible Finish
- Two Double Bedrooms

- Two Bathrooms
- Furnished

"Vita Properties have been tremendously helpful throughout the process of securing/renting my flat. Informative about the property, prompt communication, easy to use dashboard for sharing of information, and pleasant to work with. Highly recommend!"

SHORT LET – This exceptionally refurbished two-bedroom, two-bathroom residence is set within a sought-after block in the heart of St. John's Wood. Positioned on the second floor (with lift), the apartment has been fully refurbished to a high standard, offering a perfect blend of modern style and comfort. It features two spacious bedrooms with custom-fitted wardrobes, a large reception room, and a separate eat-in kitchen diner with premium appliances. The flat oozes with natural light throughout and offers the potential of an allocated off street parking space.


Residents also benefit from walking distance to St John Wood High Street, Regent's Park and the seconds to the tube, this property offers outstanding city living in one of London's most desirable locations.

 **Flat**

 Available to Let

 x 2

 x 2

 x 2

SCAN FOR
A VIDEO
WALKTHROUGH



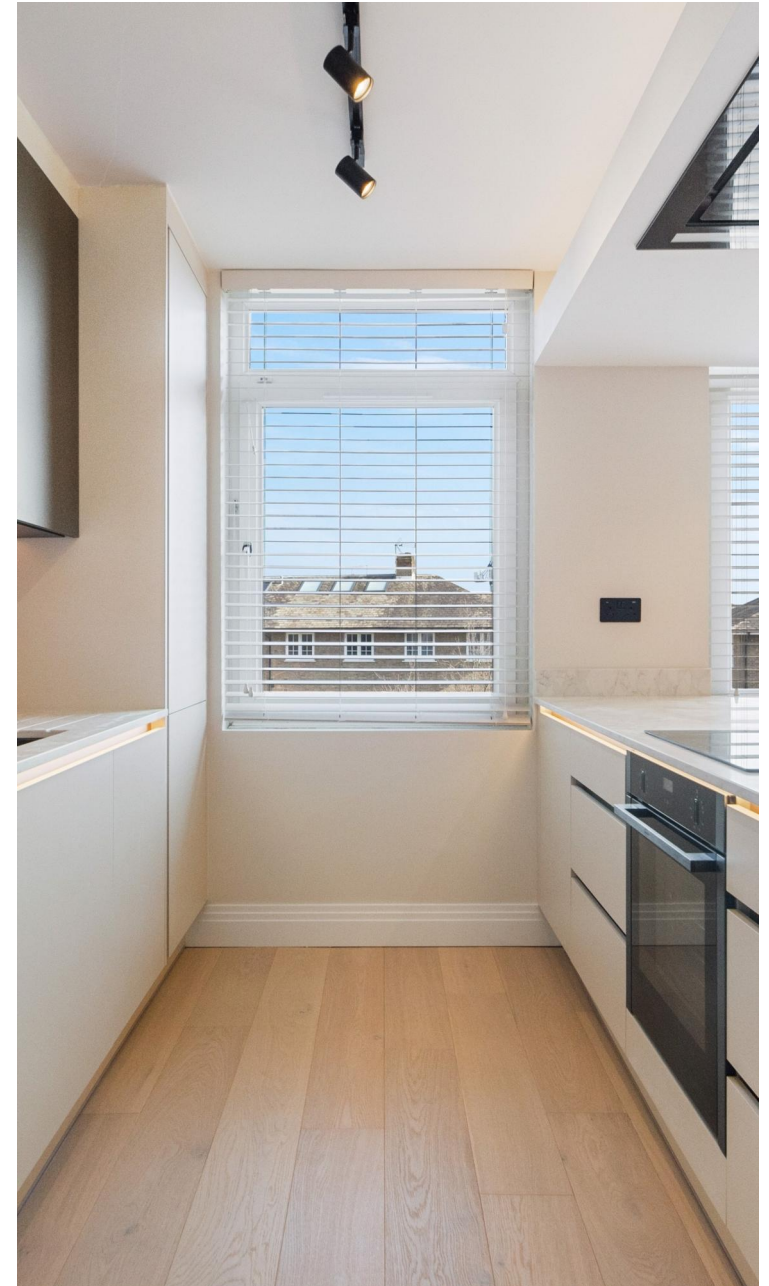
Oliver Kent

 oliver.kent@vitaproperties.uk

 +4477 7274 0351



"I was very impressed with Vita and their network of buyers. When the sale of my flat fell through (twice) they worked extremely hard to find new buyers in a difficult market - thank you!"



"Working with Vita properties has been a smooth experience! No complaints at all. Our letting agent, Diana has been fantastic and very helpful throughout the whole process. I would highly recommend both Vita properties and Diana."



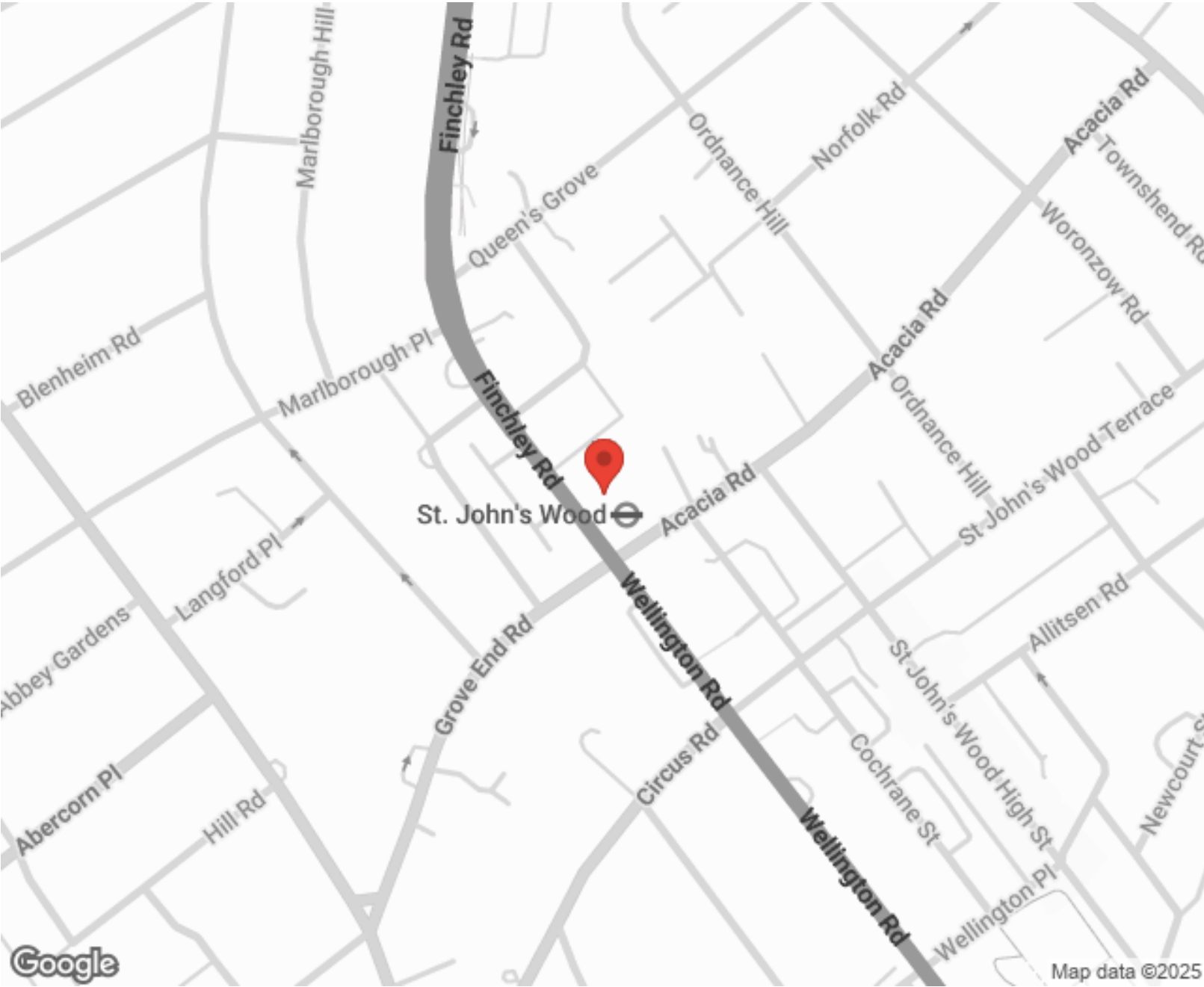
"I used Vita properties to find a flat recently and it was an overall professional, personalised and positive experience. Saira went the extra mile to accommodate to our needs and quick to help us whenever possible."



**MORE INFO, PICTURES,
CONTACT ON
OUR WEBSITE**



"Vita Properties is a very professional agency. My experience with them was incredible and the entire team was very helpful and kind throughout the renting process. I'd highly recommend!"



Score	Energy rating	Current	Potential
92+	A		
81-91	B		82 B
69-80	C	79 C	
55-68	D		
39-54	E		
21-38	F		
1-20	G		

SCAN FOR MORE
GOOGLE REVIEWS






Google



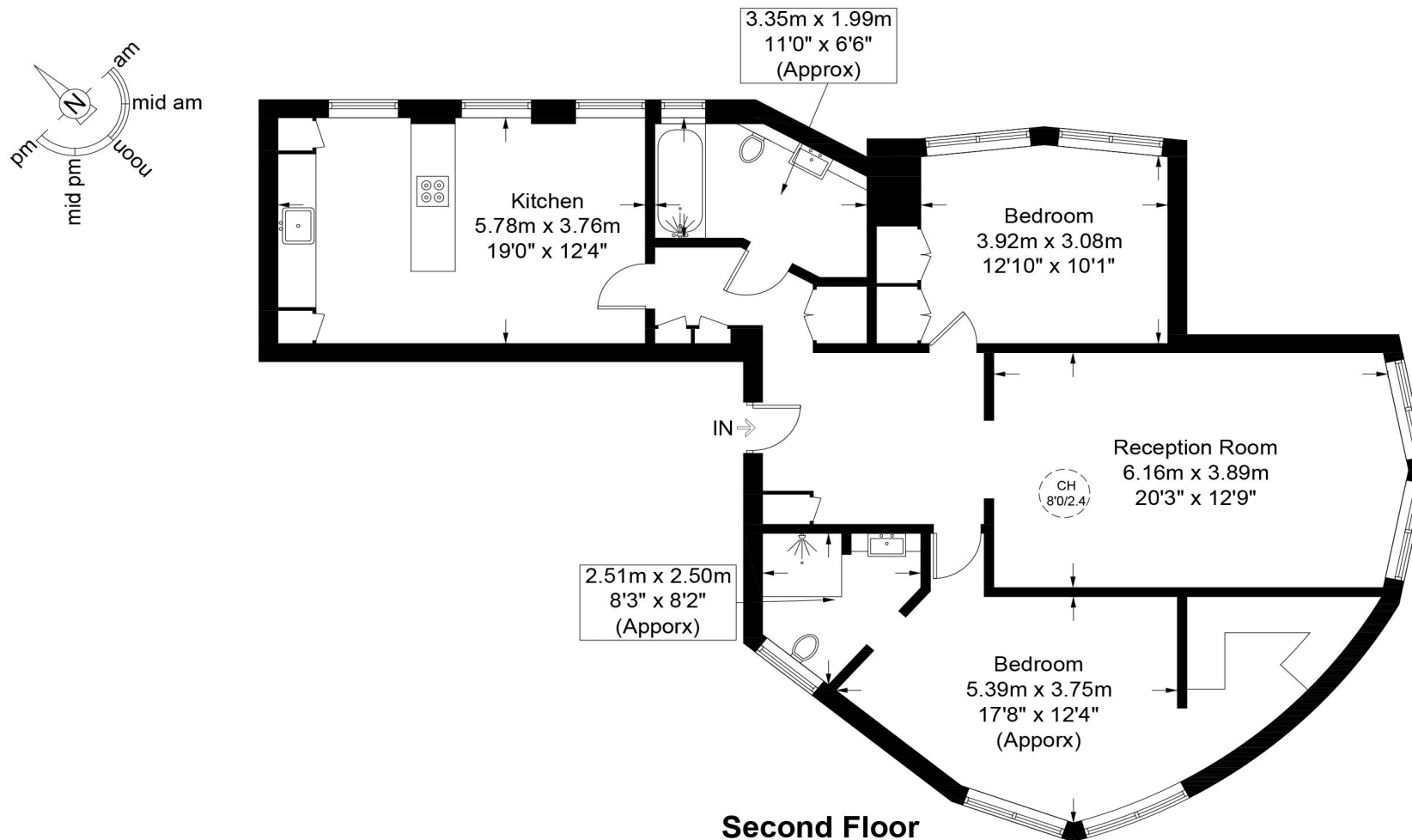
4.9 Stars | 132 Reviews

Find us on social media

-  vitaproperties
-  VitaProperties
-  VitaProperties

Athena Court, NW8

Approximate Gross Internal Area = 1227 sq ft / 114.0 sq m



This plan is for layout guidance only and is not drawn to scale unless stated. All dimensions, including windows, doors, and the Total Gross Internal Area (GIA), are approximate. For precise measurements, please consult a qualified architect or surveyor before making any decisions based on this plan.



**Certified
Property
Measurer**