



Boydell Court, St. Johns Wood Park, London, NW8 | £5,650

- Heating and Hot Water Included
- Furnished
- Pet Friendly
- Newly Refurbished

- Two En-Suite's
- Walking Distance To Public Transport and Amenities
- Available 25th January 2025

"Vita Properties have been tremendously helpful throughout the process of securing/renting my flat. Informative about the property, prompt communication, easy to use dashboard for sharing of information, and pleasant to work with. Highly recommend!"

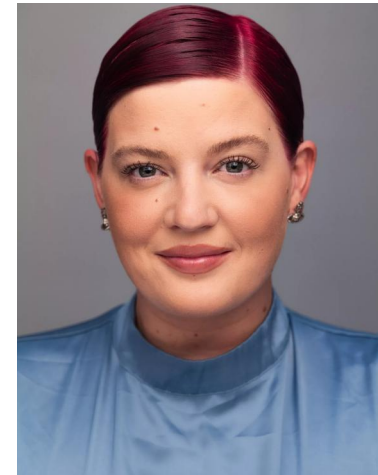
---

This stunning three-bedroom flat, set within a secure gated development, has been recently refurbished to the highest standard with bespoke interior design. The spacious open-plan living area seamlessly integrates with the modern kitchen, which is fully equipped with top-of-the-range Bosch appliances. A dedicated breakfast/dining area adds to the flow of this light-filled space, perfect for both everyday living and entertaining.



The property offers three well-proportioned bedrooms, two of which benefit from en-suite bathrooms for added convenience and privacy. The third bedroom is serviced by a family bathroom.

Located within walking distance of both St John's Wood and Swiss Cottage Stations, this exceptional flat combines luxurious living with a prime location.

-  Flat
-  Available to Let
-  x 3
-  x 1
-  x 3



Phoebe Knight

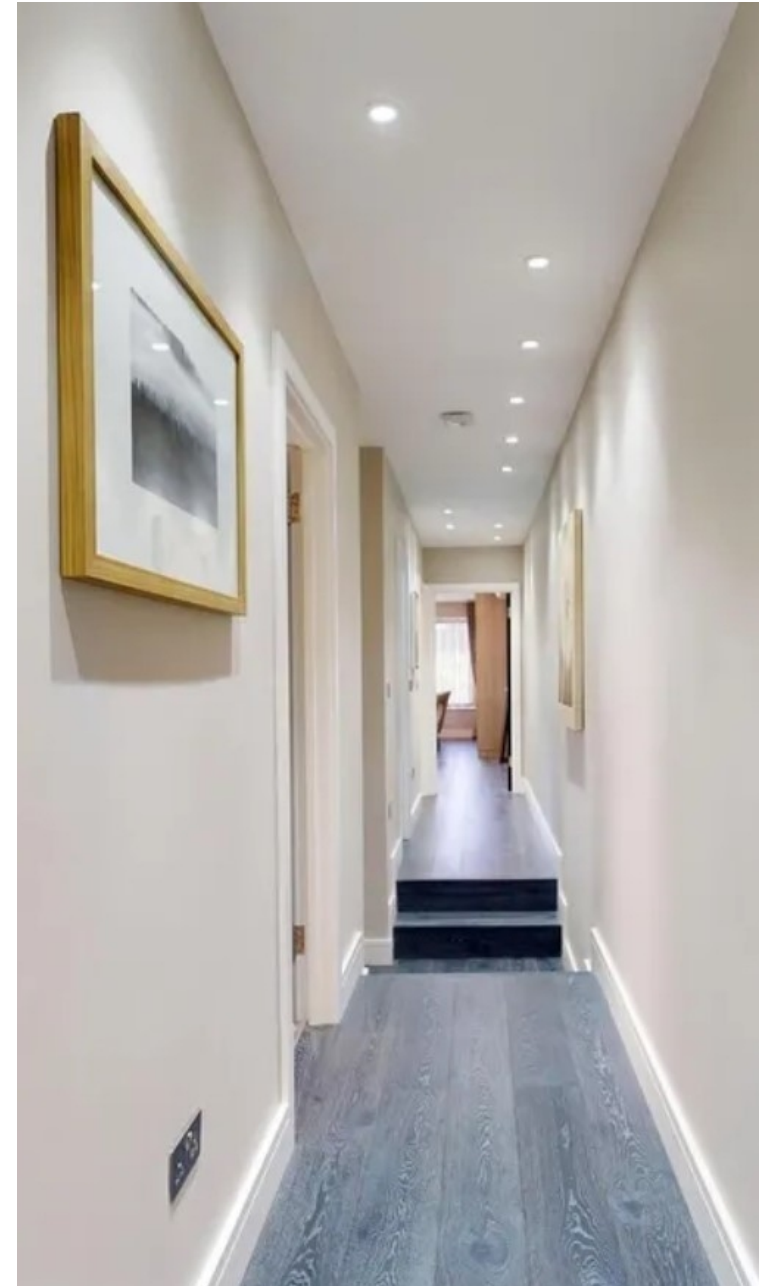
 [phoebe@vitaproperties.uk](mailto:phoebe@vitaproperties.uk)  
 +4475 8401 9612





"I was very impressed with Vita and their network of buyers. When the sale of my flat fell through (twice) they worked extremely hard to find new buyers in a difficult market - thank you!"

---



"Working with Vita properties has been a smooth experience! No complaints at all. Our letting agent, Diana has been fantastic and very helpful throughout the whole process. I would highly recommend both Vita properties and Diana."

---





"I used Vita properties to find a flat recently and it was an overall professional, personalised and positive experience. Saira went the extra mile to accommodate to our needs and quick to help us whenever possible."

---

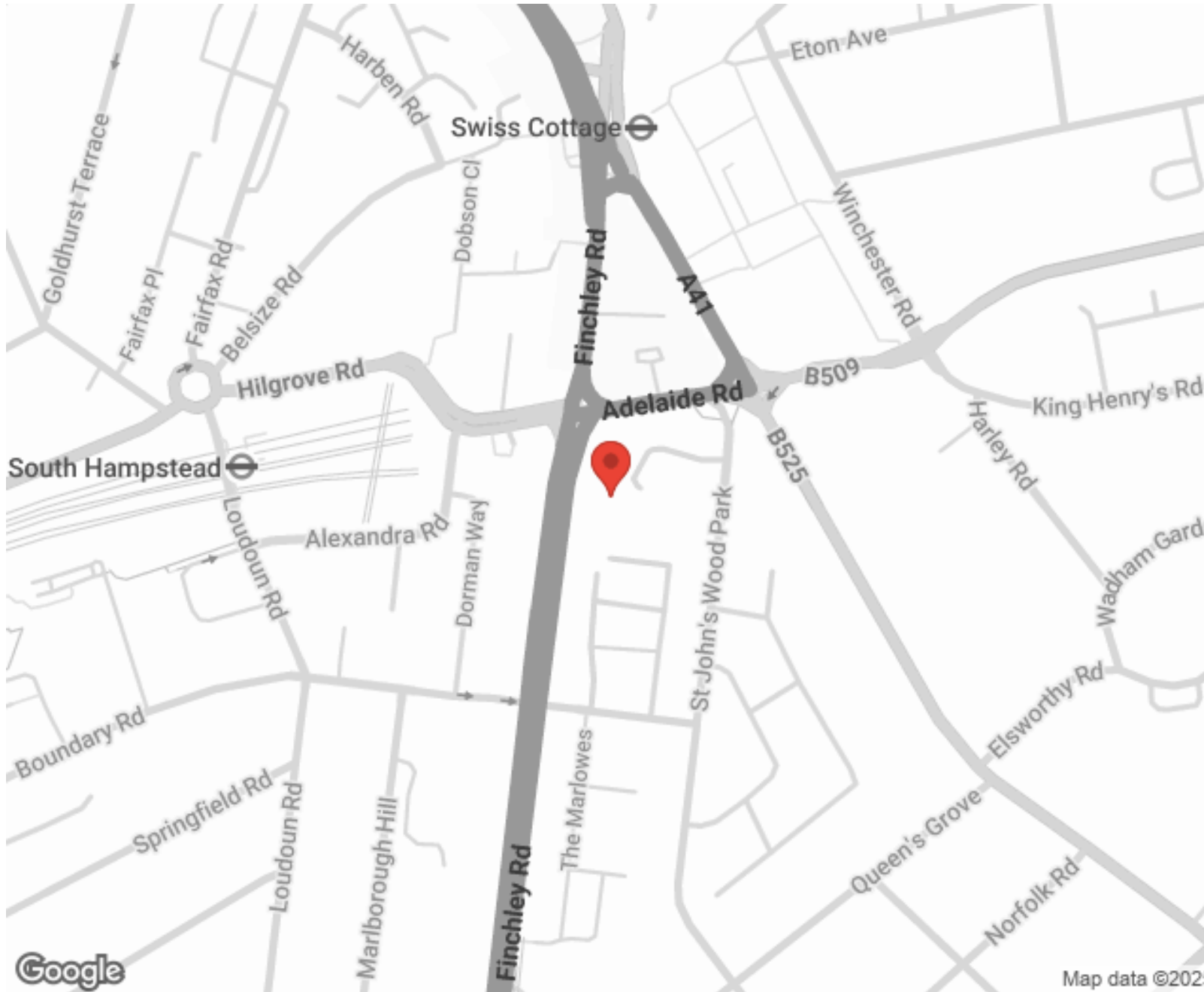


**MORE INFO, PICTURES,  
CONTACT ON  
OUR WEBSITE**



"Vita Properties is a very professional agency. My experience with them was incredible and the entire team was very helpful and kind throughout the renting process. I'd highly recommend!"

---



SCAN FOR MORE  
GOOGLE REVIEWS






Google

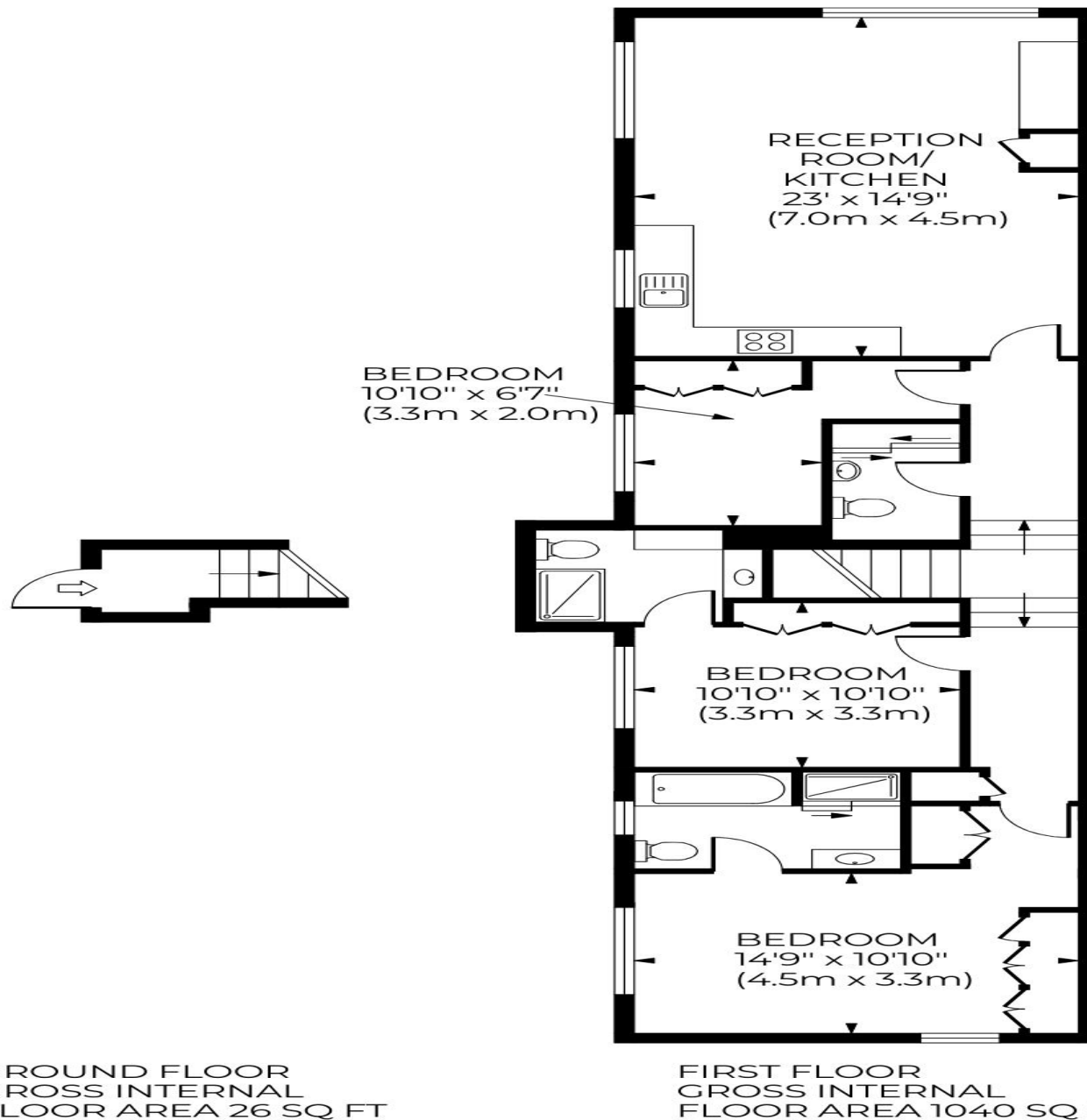


4.9 Stars | 132 Reviews

Find us on social media

-  vitaproperties
-  VitaProperties
-  VitaProperties

BOYDELL COURT  
Approximate Gross Internal Area 1066 sq ft / 99.0 sq m



Although every attempt has been made to ensure accuracy, all measurements are approximate.  
The floor plan's for illustrative purposes only and not to scale. Measured in accordance to RICS standards.  
DE-PHOTOGRAPHY.NET